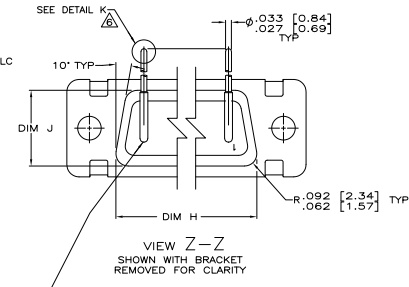
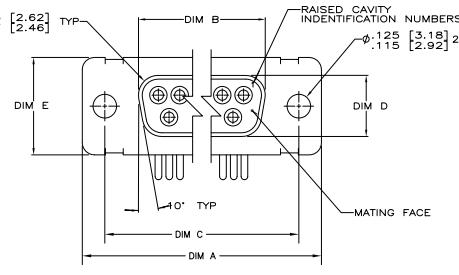
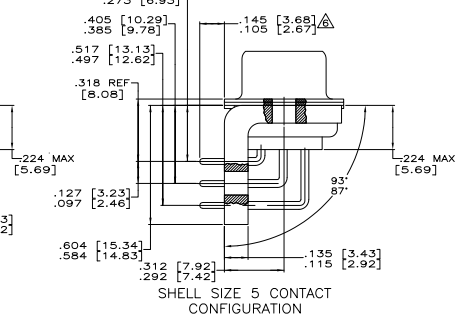
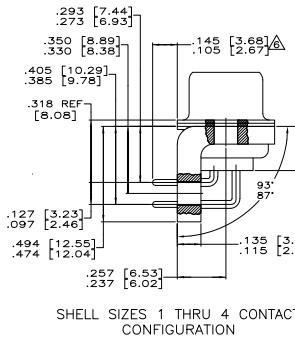
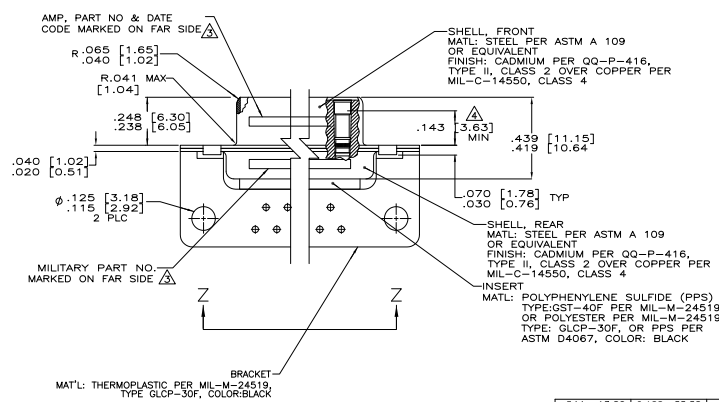


THIS DRAWING IS UNCLASSIFIED  
 DATE 03/08/98 BY 111M111 RK/HMR

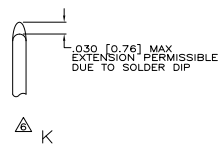
REV	DATE	DESCRIPTION	BY	APP
01		REVISED PER EDD-11-00930	111M111	RK/HMR



- SEE SHEET 2 FOR RECOMMENDED P.C. BOARD LAYOUT. TRUE POSITION TOLERANCE FOR P.C. BOARD LAYOUT IS .010 [0.25] AT MAX MATERIAL CONDITION. SUGGESTED BOARD THICKNESS IS .125 [3.18]
- THE CONNECTORS DESCRIBED IN THIS DOCUMENT MEET THE REQUIREMENTS OF MIL-C-24308 AND MATE WITH ANY PLUG CONNECTOR WITH SAME INSERT ARRANGEMENT.
- MARKED WITH .047 [1.19]-.062 [1.57] HIGH CHARACTERS. FAR SIDE REFERS TO THE WIDE SIDE OF THE KEYSTONE. NEAR SIDE REFERS TO THE NARROW SIDE OF THE KEYSTONE. IF THE REAR SHELL IS TOO SMALL FOR THE ENTIRE MILITARY PART NUMBER, MARKING SHALL BE LOCATED AS FOLLOWS:
  - A. "M24308" ON FRONT SHELL, FAR SIDE.
  - B. SLASH SHEET AND DASH NUMBER ON REAR SHELL, FAR SIDE.
  - C. "AMP" AND DATE CODE ON FRONT SHELL, NEAR SIDE.
  - D. AMP PART NUMBER ON REAR SHELL, NEAR SIDE.
- IF THE FRONT SHELL IS TOO SMALL FOR "AMP", PART NUMBER AND DATE CODE, MARKING SHALL BE SPLIT AS FOLLOWS:
  - A. PART NUMBER ON REAR SHELL, NEAR SIDE.
  - B. "AMP" AND DATE CODE ON FRONT SHELL, NEAR SIDE.
  - C. MILITARY PART NUMBER ON REAR SHELL, FAR SIDE.
- POINT OF ELECTRICAL ENGAGEMENT - AS MEASURED WITH A .0390 [0.991]-.0393 [0.998] DIA SQUARE ENDED TEST PIN.
- THIS DRAWING SHALL BE INTERPRETED IN ACCORDANCE WITH APPLICABLE STANDARDS LISTED IN MIL-STD-100.
- SOLDER DIP PER MIL-STD-2000 COMPOSITION Sn63 CONFORMING TO QQ-S-571 IN THE ENTIRE AREA OF DIMENSION SHOWN. 1218434-6 THRU -10 ONLY.



MS18277-1	50	5	M24308/23-29F	1218434-5	1-1218434-0														
544	13.82	2.188	55.58	.620	15.75	.428	10.87	2.411	61.24	2.069	52.55	2.650	67.31	MS18277-1	50	5	M24308/23-29F	1218434-5	1-1218434-0
524	13.31	2.168	55.07	.590	14.99	.418	10.69	2.401	60.99	2.059	52.30	2.620	66.55	MS18276-1	37	4	M24308/23-28F	1218434-4	1218434-9
432	10.97	2.282	57.96	.509	12.93	.316	8.03	2.505	63.63	2.164	54.97	2.744	69.70	MS18275-1	25	3	M24308/23-27F	1218434-3	1218434-8
412	10.46	2.262	57.45	.479	12.17	.306	7.77	2.485	63.37	2.154	54.71	2.714	68.94	MS18274-1	15	2	M24308/23-26F	1218434-2	1218434-7
432	10.97	1.635	41.53	.509	12.93	.316	8.03	1.857	47.17	1.516	38.51	2.103	53.42	MS18273-1	9	1	M24308/23-25F	1218434-1	1218434-5
412	10.46	1.615	41.02	.479	12.17	.306	7.77	1.847	46.91	1.506	38.25	2.073	52.65	MS18272-1	37	4	M24308/23-24F	1218434-4	1218434-9
432	10.97	1.083	27.76	.509	12.93	.316	8.03	1.317	33.45	.976	24.79	1.556	39.52	MS18271-1	25	3	M24308/23-23F	1218434-3	1218434-8
412	10.46	1.073	27.25	.479	12.17	.306	7.77	1.307	33.20	.966	24.54	1.526	38.76	MS18270-1	15	2	M24308/23-22F	1218434-2	1218434-7
432	10.97	.769	19.53	.509	12.93	.316	8.03	.989	25.12	.648	16.46	1.228	31.19	MS18273-1	9	1	M24308/23-25F	1218434-1	1218434-5
412	10.46	.749	19.02	.479	12.17	.306	7.77	.979	24.87	.638	16.21	1.198	30.43	MS18272-1	37	4	M24308/23-24F	1218434-4	1218434-9
544	13.82	2.188	55.58	.620	15.75	.428	10.87	2.411	61.24	2.069	52.55	2.650	67.31	MS18277-1	50	5	M24308/23-29F	1218434-5	1218434-5
524	13.31	2.168	55.07	.590	14.99	.418	10.69	2.401	60.99	2.059	52.30	2.620	66.55	MS18276-1	37	4	M24308/23-28F	1218434-4	1218434-5
432	10.97	2.282	57.96	.509	12.93	.316	8.03	2.505	63.63	2.164	54.97	2.744	69.70	MS18275-1	25	3	M24308/23-27F	1218434-3	1218434-5
412	10.46	2.262	57.45	.479	12.17	.306	7.77	2.485	63.37	2.154	54.71	2.714	68.94	MS18274-1	15	2	M24308/23-26F	1218434-2	1218434-5
432	10.97	1.635	41.53	.509	12.93	.316	8.03	1.857	47.17	1.516	38.51	2.103	53.42	MS18273-1	9	1	M24308/23-25F	1218434-1	1218434-5
412	10.46	1.615	41.02	.479	12.17	.306	7.77	1.847	46.91	1.506	38.25	2.073	52.65	MS18272-1	37	4	M24308/23-24F	1218434-4	1218434-5
432	10.97	1.083	27.76	.509	12.93	.316	8.03	1.317	33.45	.976	24.79	1.556	39.52	MS18271-1	25	3	M24308/23-23F	1218434-3	1218434-5
412	10.46	1.073	27.25	.479	12.17	.306	7.77	1.307	33.20	.966	24.54	1.526	38.76	MS18270-1	15	2	M24308/23-22F	1218434-2	1218434-5
432	10.97	.769	19.53	.509	12.93	.316	8.03	.989	25.12	.648	16.46	1.228	31.19	MS18273-1	9	1	M24308/23-25F	1218434-1	1218434-5
412	10.46	.749	19.02	.479	12.17	.306	7.77	.979	24.87	.638	16.21	1.198	30.43	MS18272-1	37	4	M24308/23-24F	1218434-4	1218434-5



THIS DRAWING IS A CONTROLLED DOCUMENT.

REVISIONS: 13-18-88, 13-18-88, 13-18-88

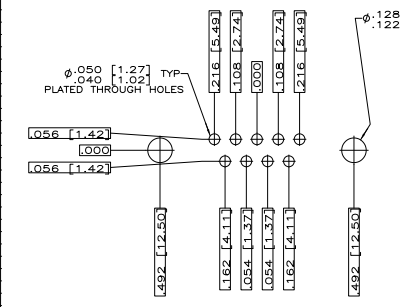
TE Connectivity

RECEPTACLE ASSY, AMP/PLATE RIGHT ANGLE, SERIES 109 SIZES 1 THRU 5

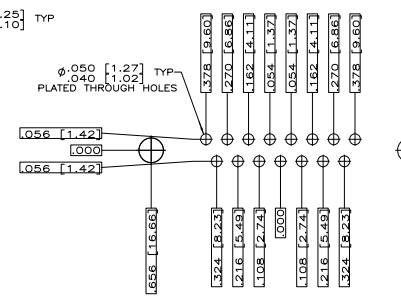
SIZE: A1 | 00779 | G=1218434

CUSTOMER DRAWING: 1218434

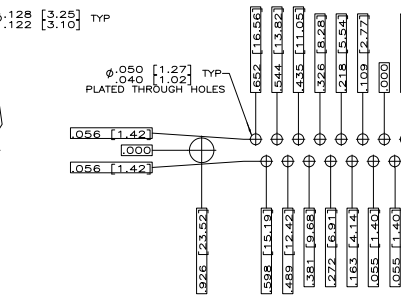
REV	DATE	DESCRIPTION	BY	APP'D
DF	DO	SEE SHEET 1	-	-



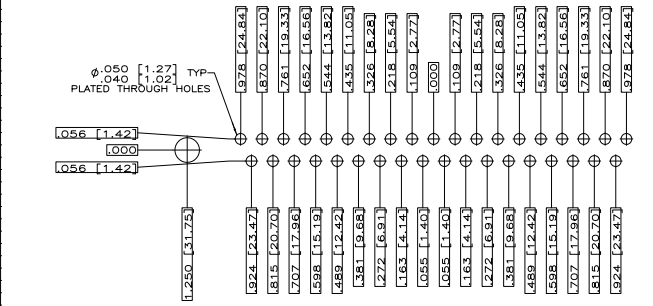
RECOMMENDED P.C. BOARD LAYOUT  
 SHELL SIZE 1 (9 POSITION)



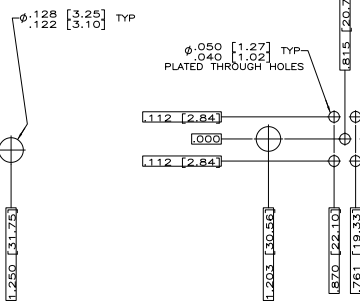
RECOMMENDED P.C. BOARD LAYOUT  
 SHELL SIZE 2 (15 POSITION)



RECOMMENDED P.C. BOARD LAYOUT  
 SHELL SIZE 3 (25 POSITION)



RECOMMENDED P.C. BOARD LAYOUT  
 SHELL SIZE 4 (37 POSITION)



RECOMMENDED P.C. BOARD LAYOUT  
 SHELL SIZE 5 (50 POSITION) Δ

THIS DRAWING IS A CONTROLLED DOCUMENT.		REV. CONTROLLED	DATE
DESIGNED BY: J. THOMAS		12-13-89	
DRAWN BY: J. THOMAS		12-13-89	
CHECKED BY: J. THOMAS		12-13-89	
APPROVED BY: J. THOMAS		12-13-89	
CUSTOMER DRAWING		DATE: 12-13-89	REV: 1