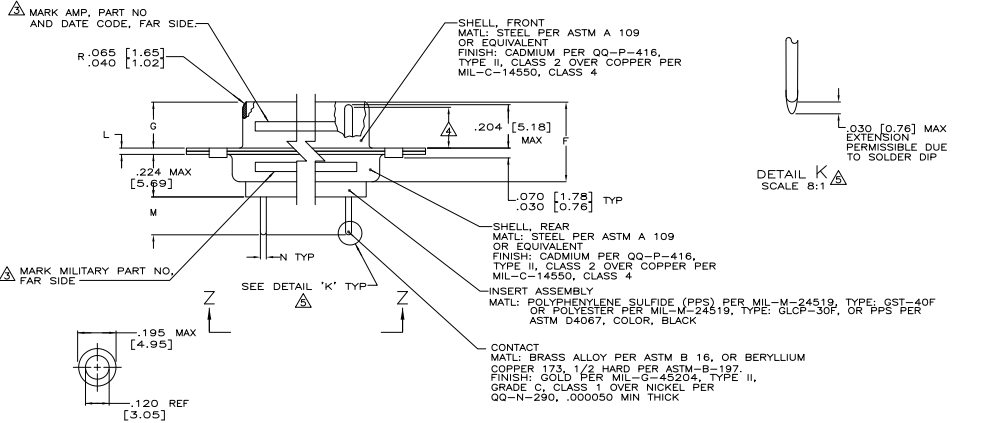


- △ SEE SHEET 2 FOR RECOMMENDED P.C. BOARD LAYOUT. TRUE POSITION TOLERANCE FOR P.C. BOARD LAYOUT IS .010 [0.25] AT MAX MATERIAL CONDITION. SUGGESTED BOARD THICKNESS IS .094 [2.39]
- △ THE CONNECTORS DESCRIBED IN THIS DOCUMENT MEET THE REQUIREMENTS OF MIL-C-24308 AND MATE WITH ANY RECEPTACLE CONNECTOR WITH SAME INSERT ARRANGEMENT.
- △ MARK WITH .047 [1.19]-.062 [1.57] HIGH CHARACTERS. FAR SIDE REFERS TO THE WIDE SIDE OF THE KEYSTONE. NEAR SIDE REFERS TO THE NARROW SIDE OF THE KEYSTONE. IF THE REAR SHELL IS TOO SMALL FOR THE ENTIRE MILITARY PART NUMBER, MARKING SHALL BE LOCATED AS FOLLOWS:
  - A. "M24308" ON FRONT SHELL, FAR SIDE.
  - B. SLASH SHEET AND DASH NUMBER ON REAR SHELL, FAR SIDE.
  - C. "AMP" AND DATE CODE ON FRONT SHELL, NEAR SIDE.
  - D. PART NUMBER ON REAR SHELL, NEAR SIDE.
- IF THE FRONT SHELL IS TOO SMALL FOR "AMP", PART NUMBER AND DATE CODE, THEN SPLIT AS FOLLOWS:
  - A. PART NUMBER ON REAR SHELL, NEAR SIDE.
  - B. "AMP" AND DATE CODE ON FRONT SHELL, NEAR SIDE.
  - C. MILITARY PART NUMBER ON REAR SHELL, FAR SIDE.
- △ REQUIREMENT FOR FULL PIN DIAMETER EXTENSION:
  - .159 [4.04] MIN. SHELL SIZES 1 AND 2.
  - .150 [3.81] MIN. SHELL SIZES 3, 4, AND 5.
- △ SOLDER DIP PER MIL-STD-2000 COMPOSITION Sn63 CONFORMING TO QQ-S-571. COVERAGE SHALL BE COMPLETE TO A DISTANCE .020 [0.51] MAX FROM INSERT ASSEMBLY.
- 6. THE SOLDER DIP PROCESS IS PERFORMED SUBSEQUENT TO THE COMPLETION OF PRODUCTION OF THE MILITARY QUALIFIED CONNECTOR. DIMENSIONS APPLY PRIOR TO SOLDER DIPPING.
- △ SPACERS (QTY 2) ARE SUPPLIED WITH CONNECTORS (NOT ATTACHED TO THE CONNECTOR).
- 8. DIMENSIONS AND TOLERANCES PER ANSI Y14.5M-1982.
- 9. THIS DRAWING SHALL BE INTERPRETED IN ACCORDANCE WITH APPLICABLE STANDARDS LISTED IN MIL-STD-100.



△ MARK AMP, PART NO AND DATE CODE, FAR SIDE.

△ MARK MILITARY PART NO, FAR SIDE.

△ SEE DETAIL 'K' TYP.

△ SPACER

SHELL FRONT  
MATERIAL: STEEL PER ASTM A 109 OR EQUIVALENT  
FINISH: CADMIUM PER QQ-P-416, TYPE II, CLASS 2 OVER COPPER PER MIL-C-14550, CLASS 4

SHELL REAR  
MATERIAL: STEEL PER ASTM A 109 OR EQUIVALENT  
FINISH: CADMIUM PER QQ-P-416, TYPE II, CLASS 2 OVER COPPER PER MIL-C-14550, CLASS 4

INSERT ASSEMBLY  
MATERIAL: POLYPHENYLENE SULFIDE (PPS) PER MIL-M-24519, TYPE: GST-40F OR POLYESTER PER MIL-M-24519, TYPE: GLCP-30F, OR PPS PER ASTM D4067, COLOR, BLACK

CONTACT  
MATERIAL: BRASS ALLOY PER ASTM B 16, OR BERYLLIUM COPPER 173, 1/2 HARD PER ASTM-B-197.  
FINISH: GOLD PER MIL-G-45204, TYPE II, GRADE C, CLASS 1 OVER NICKEL PER QQ-N-290, .000050 MIN THICK

			.544 [13.82]	2.188 [55.58]	5.524 [13.91]	12.188 [55.07]	.236 [5.99]	.436 [11.07]	.620 [15.75]	.446 [11.33]	2.411 [61.24]	2.084 [52.93]	2.650 [67.31]	MS18277-1	50	5	M24308/24-11F	1218125-5	1-1218125-9
		.049 [1.24]	2.282 [57.96]	5.624 [14.28]	12.324 [31.13]	2.36 [5.99]	.436 [11.07]	.620 [15.75]	.446 [11.33]	2.411 [61.24]	2.084 [52.93]	2.650 [67.31]	MS18276-1	37	4	M24308/24-10F	1218125-4	1218125-8	
		.029 [0.74]	2.262 [57.45]	5.524 [13.91]	12.188 [55.07]	.224 [5.69]	.416 [10.57]	.599 [15.23]	.478 [12.17]	2.401 [60.99]	2.074 [52.68]	2.620 [66.55]	MS18275-1	25	3	M24308/24-9F	1218125-3	1218125-6	
		.040 [1.02]	1.635 [41.53]	4.32 [10.97]	1.615 [41.02]	1.093 [27.76]	.236 [5.99]	.432 [10.97]	.508 [12.93]	.334 [8.48]	1.847 [46.91]	1.529 [38.84]	2.073 [52.65]	MS18274-1	15	2	M24308/24-8F	1218125-2	1218125-5
		.020 [0.51]	1.635 [41.53]	4.12 [10.46]	1.093 [27.76]	.224 [5.69]	.412 [10.46]	.478 [12.17]	.324 [8.23]	1.847 [46.91]	1.529 [38.84]	2.073 [52.65]	MS18273-1	9	1	M24308/24-7F	1218125-1	1218125-4	
.033	.208	.168	.544 [13.82]	2.188 [55.58]	5.524 [13.91]	12.188 [55.07]	.236 [5.99]	.436 [11.07]	.620 [15.75]	.446 [11.33]	2.411 [61.24]	2.084 [52.93]	2.650 [67.31]	MS18277-1	50	5	M24308/24-11F	1218125-5	1218125-8
.027	.168	.127	2.282 [57.96]	5.624 [14.28]	12.324 [31.13]	2.36 [5.99]	.436 [11.07]	.620 [15.75]	.446 [11.33]	2.411 [61.24]	2.084 [52.93]	2.650 [67.31]	MS18276-1	37	4	M24308/24-10F	1218125-4	1218125-7	
0.84	5.28	4.27	2.262 [57.45]	5.524 [13.91]	12.188 [55.07]	.224 [5.69]	.416 [10.57]	.599 [15.23]	.478 [12.17]	2.401 [60.99]	2.074 [52.68]	2.620 [66.55]	MS18275-1	25	3	M24308/24-9F	1218125-3	1218125-6	
0.69	4.27	3.27	1.635 [41.53]	4.32 [10.97]	1.615 [41.02]	1.093 [27.76]	.236 [5.99]	.432 [10.97]	.508 [12.93]	.334 [8.48]	1.847 [46.91]	1.529 [38.84]	2.073 [52.65]	MS18274-1	15	2	M24308/24-8F	1218125-2	1218125-5
			1.635 [41.53]	4.12 [10.46]	1.093 [27.76]	.224 [5.69]	.412 [10.46]	.478 [12.17]	.324 [8.23]	1.847 [46.91]	1.529 [38.84]	2.073 [52.65]	MS18273-1	9	1	M24308/24-7F	1218125-1	1218125-4	


THIS DRAWING IS A CONTROLLED DOCUMENT.

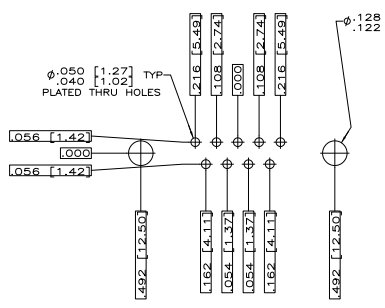
REV	DATE	DESCRIPTION	BY	CHK	APP
1		REVISED PER ESD-11-00930			

AMPLIMITE PLUG ASSY, LOW PROFILE  
SIZE 20 POSTED, .030 DIA LONG POST  
SERIES 100, SHELL SIZES 1 THRU 5

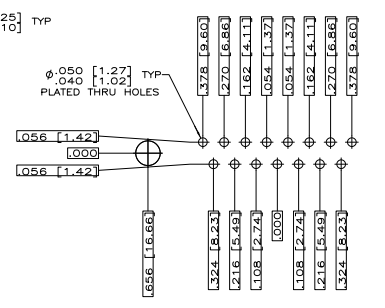
SIZE: 100779 Q=1218125

CUSTOMER DRAWING

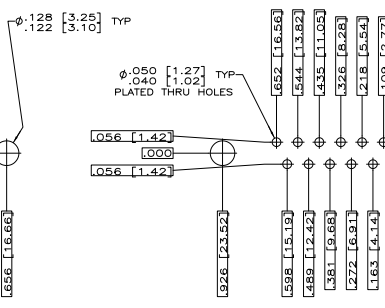
REV	DATE	DESCRIPTION	BY	APP
DF	DO	SEE SHEET 1	-	-



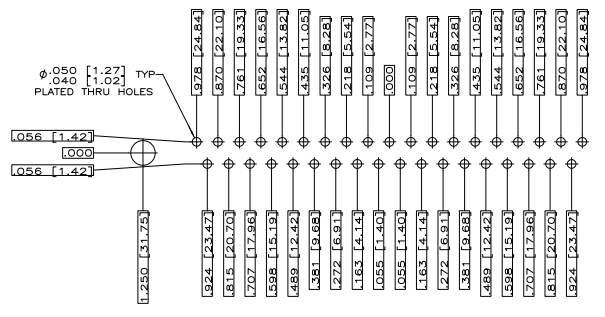
RECOMMENDED P.C. BOARD LAYOUT  
 SHELL SIZE 1 (9 POSITION) Δ



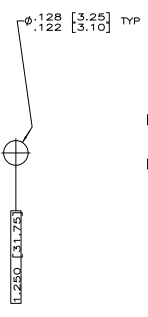
RECOMMENDED P.C. BOARD LAYOUT  
 SHELL SIZE 2 (15 POSITION) Δ



RECOMMENDED P.C. BOARD LAYOUT  
 SHELL SIZE 3 (25 POSITION) Δ



RECOMMENDED P.C. BOARD LAYOUT  
 SHELL SIZE 4 (37 POSITION) Δ



RECOMMENDED P.C. BOARD LAYOUT  
 SHELL SIZE 5 (50 POSITION) Δ

THIS DRAWING IS A CONTROLLED DOCUMENT.		DATE	BY	CHKD	APP'D
DESIGNED	APPROVED	DATE	BY	CHKD	APP'D
TE Connectivity		AMPLIMITE PLUG ASSY, LOW PROFILE SIZE 20 POSTED P.C. BOARD CONTACTS, 630 DIA LONG POST, SERIES 100			
SIZE	DATE	ISSUE	DRAWING NO	REVISED TO	
A1	00779	1218125			
CUSTOMER DRAWING		SIZE	4:1	SHEET	2 of 2