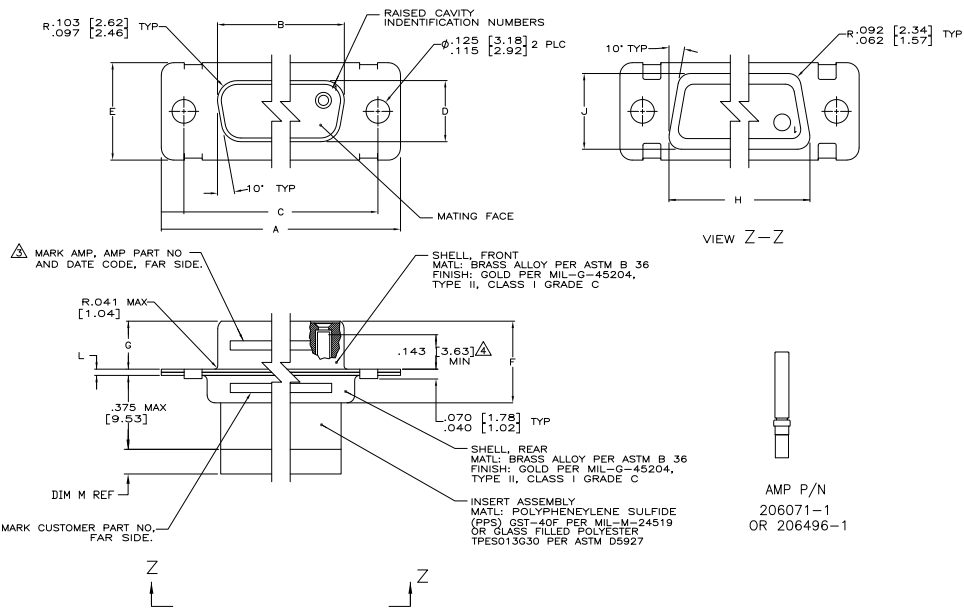


REVISE		REVISIONS		
NO.	DATE	DESCRIPTION	BY	APP.
1	H	REV PER ECO 10-02529	10DEC10	PY RL



1. THIS CONNECTOR ASSEMBLY IS SUPPLIED WITH METAL CONTACT RETENTION CLIPS INSTALLED IN THE INSERT ASSEMBLY.
2. THIS CONNECTOR ASSEMBLY MEETS THE REQUIREMENTS OF MIL-C-24308 AND MATES WITH ANY PLUG CONNECTOR WITH SAME INSERT ARRANGEMENT.
3. MARK WITH  $.047 [1.19]$ -. $062 [1.57]$  HIGH CHARACTERS. FAR SIDE REFERS TO THE WIDE SIDE OF THE KEYSTONE. IF THE REAR SHELL IS TOO SMALL FOR THE ENTIRE CUSTOMER PART NUMBER, MARKING MAY BE LOCATED AS FOLLOWS:
  - A. CUSTOMER BASE NUMBER, FRONT SHELL, FAR SIDE.
  - B. CUSTOMER DASH NUMBER, REAR SHELL, FAR SIDE.
  - C. AMP PART NUMBER, REAR SHELL, NEAR SIDE.
  - D. "AMP" AND DATE CODE, FRONT SHELL, NEAR SIDE.
4. POINT OF ELECTRICAL ENGAGEMENT - AS MEASURED WITH A  $.0295 [0.75]$  -  $.0305 [7.77]$  DIAMETER SQUARE ENDED TEST PIN. CONTACT SHOWN INSTALLED FOR DIMENSIONAL REFERENCE ONLY.
5. MAXIMUM WIRE INSULATION TO BE USED WITH THIS CONNECTOR ASSEMBLY IS  $.072 [1.83]$  DIAMETER.
6. FOR CONTACT CRIMPING INSTRUCTION SHEET REFER TO AMP IS 7516. FOR CONTACT INSTALLATION AND REMOVAL INSTRUCTION SHEET REFER TO AMP IS 7508.
7. DIMENSIONS AND TOLERANCES PER ANSI Y14.5M-1982.
8. THIS DRAWING SHALL BE INTERPRETED IN ACCORDANCE WITH APPLICABLE STANDARDS LISTED IN MIL-STD-100.

THIS DRAWING IS A CONTROLLED DOCUMENT.		DATE: 06-18-10	REV: 06-23-11	REVISED BY: [Signature]	DATE: 06-23-11
DRAWING NO: 100779		PROJECT NAME: MIL-C-24308		CUSTOMER DRAWING	
ISSUED BY: [Signature]		ISSUED DATE: 06-18-10		ISSUED BY: [Signature]	
CHECKED BY: [Signature]		CHECKED DATE: 06-18-10		CHECKED BY: [Signature]	
APPROVED BY: [Signature]		APPROVED DATE: 06-18-10		APPROVED BY: [Signature]	
TITLE: AMP/ITE AMPLIMITE NONMAGNETIC RECEPTACLE ASSY WITH SIZE 22 GROUP TYPE SOCKET CONTACTS SERIES 90, W/REAR ORIENTED CONTACTS		SIZE: A1		SCALE: 4:1	
SHEET NO: 1		TOTAL SHEETS: 2		REV: H	

