

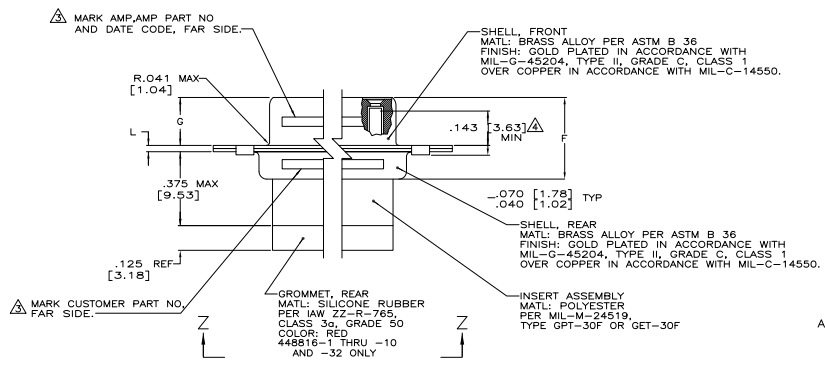
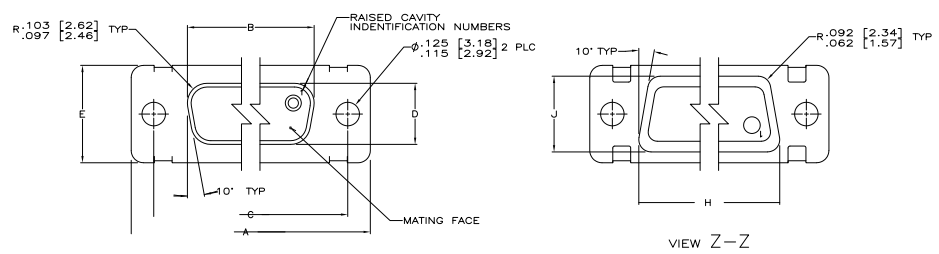
REV	DATE	DESCRIPTION	BY	APP'D
0		REV PER ECO-10-00812		

- THIS CONNECTOR ASSEMBLY IS SUPPLIED WITH METAL CONTACT RETENTION CLIPS INSTALLED IN THE INSERT ASSEMBLY.
- THIS CONNECTOR ASSEMBLY MEETS THE REQUIREMENTS OF LORAL SPEC 010772 AND MATES WITH ANY PLUG CONNECTOR WITH SAME INSERT ARRANGEMENT.
- MARK WITH .047 [1.19]-.062 [1.57] HIGH CHARACTERS.
 FAR SIDE REFERS TO THE WIDE SIDE OF THE KEYSTONE.
 NEAR SIDE REFERS TO THE NARROW SIDE OF THE KEYSTONE.
 IF THE REAR SHELL IS TOO SMALL FOR THE ENTIRE CUSTOMER PART NUMBER, MARKING SHALL BE LOCATED AS FOLLOWS:
 A. CUSTOMER BASE NUMBER, ON FRONT SHELL, FAR SIDE.
 B. CUSTOMER DASH NUMBER ON REAR SHELL, FAR SIDE.
 C. "AMP" AND DATE CODE ON FRONT SHELL, NEAR SIDE.
 D. "AMP" PART NUMBER ON REAR SHELL, NEAR SIDE.
- POINT OF ELECTRICAL ENGAGEMENT - AS MEASURED WITH A .039 [0.99] - .041 [1.04] DIAMETER SQUARE ENDED TEST PIN. CONTACT SHOWN INSTALLED FOR DIMENSIONAL REFERENCE ONLY.
- MAXIMUM WIRE INSULATION TO BE USED WITH THIS CONNECTOR ASSEMBLY IS .072 [1.83] DIAMETER.
- FOR CONTACT CRIMPING INSTRUCTION SHEET REFER TO AMP IS 7516. CONTACT INSTALLATION AND REMOVAL INSTRUCTION SHEET REFER TO AMP IS 7508.
- DIMENSIONS AND TOLERANCES PER ANSI Y14.5M-1982.
- THIS DRAWING SHALL BE INTERPRETED IN ACCORDANCE WITH APPLICABLE STANDARDS LISTED IN MIL-STD-100.

PRELIMINARY-NOT RELEASED FOR PRODUCTION	.040 [1.02]	.432 [10.97]	1.093 [27.76]	.248 [6.30]	.439 [11.15]	.509 [12.93]	.316 [8.03]	1.317 [33.45]	.976 [24.79]	1.556 [39.52]	MS18274-1	15	2	B010772-0043	3-448816-2	3-448816-2
PRELIMINARY-NOT RELEASED FOR PRODUCTION	.020 [0.51]	.412 [10.46]	1.073 [27.25]	.238 [6.05]	.419 [10.64]	.478 [12.17]	.306 [7.77]	1.307 [33.20]	.966 [24.54]	1.526 [38.76]	MS18277-1	50	5	B010772-0032	1-448816-5	1-448816-5
PRELIMINARY-NOT RELEASED FOR PRODUCTION	.049 [1.24]	.544 [13.82]	2.188 [55.58]		.620 [15.75]	.428 [10.87]		2.411 [61.24]	2.069 [52.55]	2.650 [67.31]	MS18276-1	37	4	B010772-0030	1-448816-4	1-448816-4
PRELIMINARY-NOT RELEASED FOR PRODUCTION	.029 [0.74]	.524 [13.31]	2.168 [55.07]		.590 [14.99]	.418 [10.62]		2.401 [60.99]	2.059 [52.30]	2.620 [66.55]	MS18275-1	25	3	B010772-0028	1-448816-3	1-448816-3
PRELIMINARY-NOT RELEASED FOR PRODUCTION	.040 [1.02]	.432 [10.97]	1.093 [27.76]	.248 [6.30]	.439 [11.15]	.509 [12.93]	.316 [8.03]	1.317 [33.45]	.976 [24.79]	1.556 [39.52]	MS18274-1	15	2	B010772-0028	1-448816-2	1-448816-2
PRELIMINARY-NOT RELEASED FOR PRODUCTION	.020 [0.51]	.412 [10.46]	1.073 [27.25]	.238 [6.05]	.419 [10.64]	.478 [12.17]	.306 [7.77]	1.307 [33.20]	.966 [24.54]	1.526 [38.76]	MS18277-1	50	5	B010772-0010	1-448816-0	1-448816-0
											MS18276-1	37	4	AD10772-0008	448816-9	448816-9
											MS18275-1	25	3	AD10772-0008	448816-8	448816-8
											MS18274-1	15	2	AD10772-0004	448816-7	448816-7
											MS18273-1	9	1	AD10772-0002	448816-6	448816-6
											MS18277-1	50	5	B010772-0010	448816-5	448816-5
											MS18276-1	37	4	B010772-0008	448816-4	448816-4
											MS18275-1	25	3	B010772-0006	448816-3	448816-3
											MS18274-1	15	2	B010772-0004	448816-2	448816-2
											MS18273-1	9	1	B010772-0002	448816-1	448816-1

NO. OF SHELL POS.	NO. OF SHELL SIZE	CUSTOMER P/N ON CONNECTOR	AMP P/N ON CONNECTOR	PART NUMBER
15	2	B010772-0043	3-448816-2	3-448816-2
50	5	B010772-0032	1-448816-5	1-448816-5
37	4	B010772-0030	1-448816-4	1-448816-4
25	3	B010772-0028	1-448816-3	1-448816-3
15	2	B010772-0028	1-448816-2	1-448816-2
50	5	B010772-0010	1-448816-0	1-448816-0
37	4	AD10772-0008	448816-9	448816-9
25	3	AD10772-0008	448816-8	448816-8
15	2	AD10772-0004	448816-7	448816-7
9	1	AD10772-0002	448816-6	448816-6
50	5	B010772-0010	448816-5	448816-5
37	4	B010772-0008	448816-4	448816-4
25	3	B010772-0006	448816-3	448816-3
15	2	B010772-0004	448816-2	448816-2
9	1	B010772-0002	448816-1	448816-1

REVISES		DATE	BY	APP'D
DF	DO			



THIS DRAWING IS A CONTROLLED DOCUMENT.		DATE: 2-11-03	REV: 2	BY: J. GENZY	APP'D: J. GENZY
DESIGNER: J. GENZY		DATE: 2-11-03	REV: 2	BY: J. GENZY	APP'D: J. GENZY
CHECKER: J. GENZY		DATE: 2-11-03	REV: 2	BY: J. GENZY	APP'D: J. GENZY
DRAWN: J. GENZY		DATE: 2-11-03	REV: 2	BY: J. GENZY	APP'D: J. GENZY
DATE: 2-11-03		REV: 2	BY: J. GENZY	APP'D: J. GENZY	
CUSTOMER DRAWING		DATE: 2-11-03	REV: 2	BY: J. GENZY	APP'D: J. GENZY