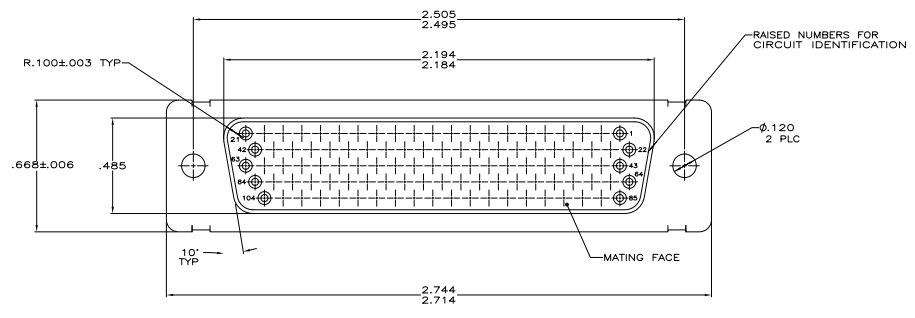
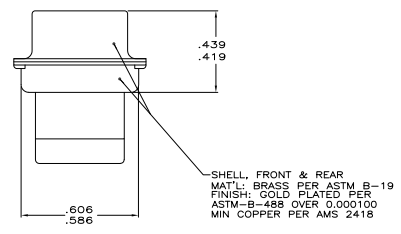
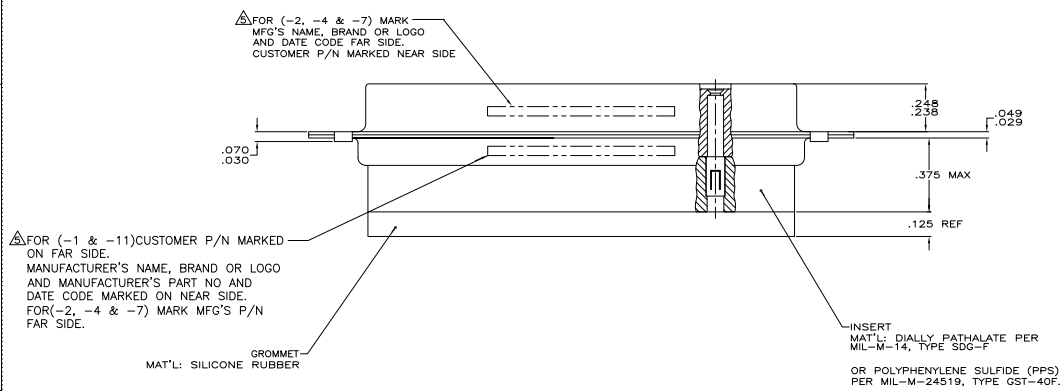


REV	DATE	BY	CHK	APP
DF	DO			
M				



- THIS RCPT. WILL MATE WITH ANY SIZE 6, 104 PDSN. PLUG IN AMPLIMITE SERIES.
 - CONNECTOR SUPPLIED WITHOUT CONTACTS; SHOWN FOR ILLUSTRATION ONLY.
 - BE-CU RETENTION CLIPS ARE INCLUDED IN INSERT AND INSTALLED WITH TINES POINTING TOWARDS MATING FACE.
 - OVERALL DIMENSIONS DO NOT INCLUDE RAISED CAVITY IDENTIFICATION.
- MARKING FAR SIDE REFERS TO WIDE SIDE OF KEYSTONE.
 NEAR SIDE REFERS TO NARROW SIDE OF KEYSTONE
- 100% INSPECTION REQUIRED PER BOEING 1B01:
 A. VISUAL
 B. DWV
 C. IR
- CUSTOMER REQUIRES SINGLE LOT DATE CODE.
- SPECIAL REQUIREMENTS:
 A. TEST TWO CONNECTORS PER LOT FOR COMPLIANCE TO GROMMET PEEL STRENGTH REQUIREMENTS.
 B. TEST ALL CIRCUIT CAVITIES FOR MISALIGNMENT OR EXCESSIVE ADHESIVE.



REV	DATE	BY	CHK	APP
1	00779	G		211672

REMARKS	CUSTOMER PART NO.	PART NO.
△	1B01-030RHW	1-211672-1
△	-	211672-7
	2A065-024V-001	211672-4
	1B01-030	211672-2
		211672-1

THIS DRAWING IS A CONTROLLED DOCUMENT.

DESIGNED BY: J. KAISER 3-11-04
 DRAWN BY: J. CH 3-28-04
 CHECKED BY: J. CH 3-28-04

REVISIONS:

REV	DATE	BY	CHK	APP
1	00779	G		211672

REVISIONS TO: 100779G=211672

CUSTOMER DRAWING