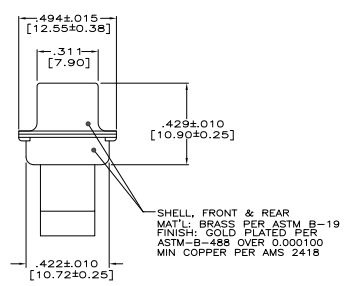
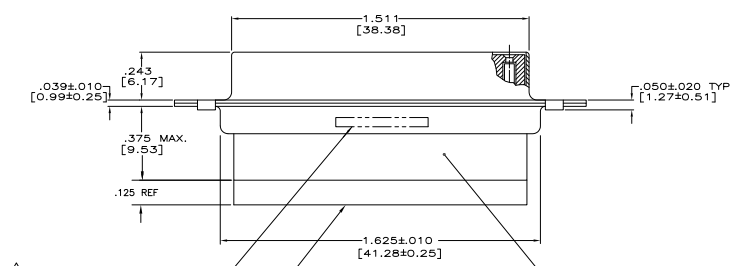


1. THIS RECEPTACLE WILL MATE WITH ANY 44 POSN, SIZE 3 PLUG IN AMPLIMITE SERIES.
2. BE-CU RETENTION CLIPS (44) ARE INCLUDED IN INSERT AND INSTALLED WITH TINES.
3. POINTING TOWARDS MATING FACE
4. CONNECTOR SUPPLIED WITHOUT CONTACTS, SHOWN FOR ILLUSTRATION ONLY
5. OVERALL DIMENSIONS DO NOT INCLUDE RAISED CAVITY ID
6. MARKING-FAR SIDE REFERS TO WIDE SIDE OF KEYSTONE.NEAR SIDE REFERS TO NARROW SIDE OF KEYSTONE.
7. 100% INSPECTION REQUIRED PER BOEING 1801:
 A. VISUAL
 B. DIM
 C. IR
8. CUSTOMER REQUIRES SINGLE LOT DATE CODE.
9. SPECIAL REQUIREMENTS:
 A. TEST TWO CONNECTORS PER LOT FOR COMPLIANCE TO GROMMET PEEL STRENGTH REQUIREMENTS.
 B. TEST ALL CIRCUIT CAVITIES FOR MISALIGNMENT OR EXCESSIVE ADHESIVE.



△ CUSTOMER P/N (IF APPLICABLE) MARKED ON FAR SIDE. MANUFACTURER'S NAME, BRAND NAME OR LOGO AND MANUFACTURER'S PART NO AND DATE CODE MARKED ON NEAR SIDE

GROMMET MATERIAL: SILICONE RUBBER

INSERT ASSEMBLY POLYPHENYLENE SULFIDE (PPS) GST-40-F PER MIL-M-24519 OR GLASS FILLED POLYESTER TP5013G30 PER ASTM-D-5927

AS SHOWN-WITH CUSTOMER PART NO 1B01-027RHV MARKED	1-211669-1
SAME AS -1 EXCEPT NO CUSTOMER MARKING	211669-3
SAME AS -1 EXCEPT WITH CUSTOMER NUMBER 2A065-021V-001 MARKED	211669-2
AS SHOWN-WITH CUSTOMER PART NO 1B01-027 MARKED	211669-1

DESCRIPTION	PART NO
RECEPTACLE ASSEMBLY, AMPLIMITE 44 POSITION, SIZE 3, SERIES 30, NON-MAGNETIC, SPECIAL, WITH GROMMET	
TYP: 4:1	REV: J