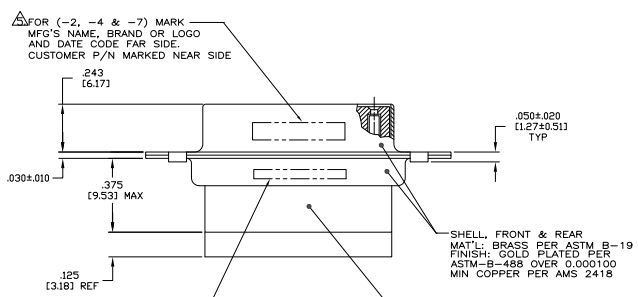
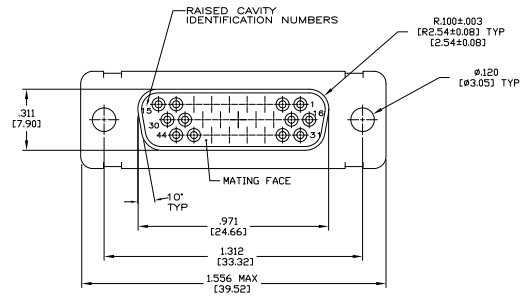


| REV | DATE | DESCRIPTION | BY | CHK | APP |
|-----|------|-----------------------|----|-----|----------------|
| DF | DO | | | | |
| K | | REV PER ECO 08-022807 | | | 170CT08 PKJ BW |

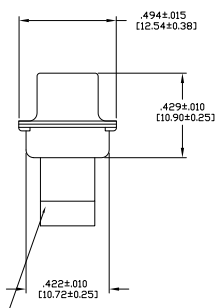
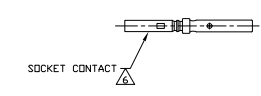


△ FOR (-2, -4 & -7) MARK MFG'S NAME, BRAND OR LOGO AND DATE CODE FAR SIDE. CUSTOMER P/N MARKED NEAR SIDE.

△ FOR (-1 & -11) CUSTOMER P/N MARKED ON FAR SIDE. MANUFACTURER'S NAME, BRAND OR LOGO AND MANUFACTURER'S PART NO AND DATE CODE MARKED ON NEAR SIDE. FOR (-2, -4 & -7) MARK MFG'S P/N FAR SIDE.

INSERT ASSEMBLY POLYPHENYLENE SULFIDE (PPS) GSI-40-F PER MIL-M-24519 OR GLASS FILLED POLYESTER TPES019G30 PER ASTM-D-5927

- THIS RECEPTACLE WILL MATE WITH ANY 26 PDSN, SIZE 2 PLUG IN AMPLIMITE SERIES.
 - BE-CU RETENTION CLIPS ARE INCLUDED IN INSERT AND INSTALLED WITH TINES POINTING TOWARDS MATING FACE.
 - CONNECTOR SUPPLIED WITHOUT CONTACTS, SHOWN FOR ILLUSTRATION ONLY. SEE NOTE 6.
 - OVERALL DIMENSIONS DO NOT INCLUDE RAISED CAVITY IDENTIFICATION.
- △ MARKING FAR SIDE REFERS TO WIDE SIDE OF KEYSTONE. NEAR SIDE REFERS TO NARROW SIDE OF KEYSTONE.
 △ SOCKET CONTACT (QTY=26) INCLUDED IN KIT. (-7 ONLY)
- △ 100% INSPECTION REQUIRED PER BOEING 1B01:
 A. VISUAL
 B. DWV
 C. IR
- △ CUSTOMER REQUIRES SINGLE LOT DATE CODE.
- △ SPECIAL REQUIREMENTS:
 A. TEST TWO CONNECTORS PER LOT FOR COMPLIANCE TO GROMMET PEEL STRENGTH REQUIREMENTS.
 B. TEST ALL CIRCUIT CAVITIES FOR MISALIGNMENT OR EXCESSIVE ADHESIVE.



| REMARKS | DESCRIPTION | PART NO |
|---------|--|------------|
| - | SAME AS -1 EXCEPT CUSTOMER PART NO. 1B01-026RHV MARKED | 1-211668-1 |
| △ | SAME AS -1 EXCEPT FDRD PART NO. B010648-0004 MARKED | 211668-7 |
| - | SAME AS -1 EXCEPT NO CUSTOMER PART NO MARKED | 211668-4 |
| - | SAME AS -1 EXCEPT WITH TRW PART NUMBER 2A065-020V-001 MARKED | 211668-2 |
| - | AS SHOWN WITH HUGHES PART NO 1B01-026 MARKED | 211668-1 |

THIS DRAWING IS A CONTROLLED DOCUMENT. **TYCO** Tyco Electronics Corporation, Harrisburg, PA 17105-3608

DESIGNER: J. MILLER, CHECKER: J. MILLER, DATE: 08-02-07
 DRAWN: J. MILLER, CHECKED: J. MILLER, DATE: 08-02-07
 PART: 211668-1, REV: 1, DATE: 08-02-07
 TITLE: RECEPTACLE ASSEMBLY, AMPLIMITE 36 POSITION, SIZE 2, SERIES 90, NON-MAGNETIC, SPECIAL, WITH GROMMET
 CUSTOMER DRAWING: A100779, C=211668