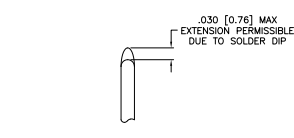
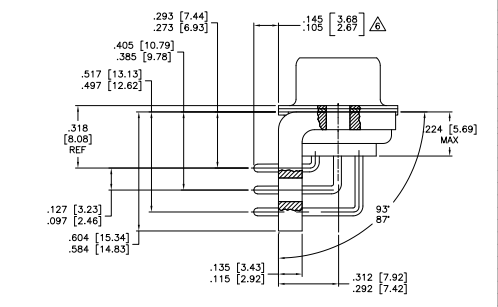
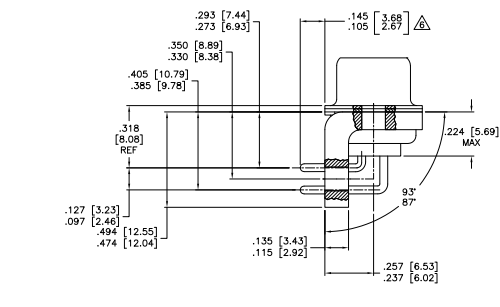
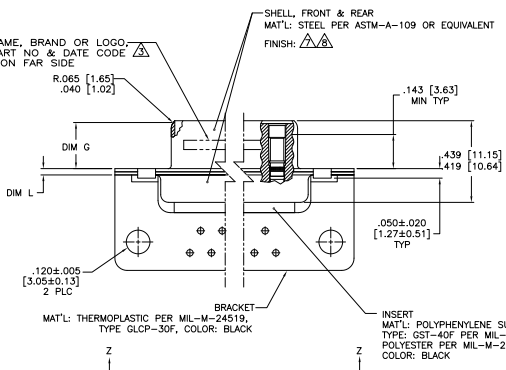


CONTACT (QTY = NO. OF POSH)  
 MATL: BRASS PER ASTM-B-16, OR BERYLLIUM  
 COPPER PER ASTM-B-194  
 FINISH: GOLD PER MIL-G-45204, TYPE II,  
 GRADE C, CLASS I IN CONTACT MATING AREA,  
 0.00010 [0.0002] MIN THK GOLD PER MIL-G-45204  
 OVER 0.00050 [0.0013] MIN THK NICKEL  
 PER QQ-N-290 ON CONTACT BODY

- 1. SEE SHEET 2 FOR RECOMMENDED P.C. BOARD LAYOUT. TRUE POSITION TOLERANCE FOR P.C. BOARD LAYOUT IS .010 [0.25] AT MAX MATERIAL CONDITION. SUGGESTED BOARD THICKNESS IS .125 [3.18]
- 2. THE CONNECTORS DESCRIBED IN THIS DOCUMENT MEET THE REQUIREMENTS OF MIL-C-24308 AND MATE WITH ANY PLUG CONNECTOR WITH SAME INSERT ARRANGEMENT.
- 3. MARKED WITH .047 [1.19]-.062 [1.57] HIGH CHARACTERS. FAR SIDE REFERS TO THE WIDE SIDE OF THE KEYSTONE. NEAR SIDE REFERS TO THE NARROW SIDE OF THE KEYSTONE. IF THE FRONT SHELL IS TOO SMALL FOR MFG'S NAME, BRAND OR LOGO, MFG'S PART NUMBER AND DATE CODE, MARKING SHALL BE SPLIT AS FOLLOWS:
  - A. MFG'S PART NUMBER ON REAR SHELL, FAR SIDE.
  - B. MFG'S NAME, BRAND OR LOGO AND DATE CODE ON FRONT SHELL, FAR SIDE.
- 4. POINT OF ELECTRICAL ENGAGEMENT - AS MEASURED WITH A 0.0390 [0.991]-0.0393 [0.998] SQUARE ENDED TEST PIN.
- 5. THIS DRAWING SHALL BE INTERPRETED IN ACCORDANCE WITH APPLICABLE STANDARDS LISTED IN MIL-STD-100.
- 6. SOLDER DIPPED PER MIL-STD-2000 COMPOSITION Sn63 CONFORMING TO QQ-S-571 IN THE ENTIRE AREA OF DIMENSION SHOWN: 1218848-6 THRU -10 ONLY.
- 7. FINISH: TIN PER ASTM-B-545, .000200 MIN THK OVER COPPER PER AMS2418.
- 8. FINISH: TIN PER ASTM-B-545, .000200 MIN THK OVER COPPER PER AMS2418.



DETAIL K  
 SCALE 8:1  
 FOR 1218834-6 THRU -10 ONLY

CONFIGURATION	SHELL SIZES 1 THRU 4 CONTACT										SHELL SIZE 5 CONTACT										
	.432 [10.97]	.412 [10.46]	.392 [9.95]	.372 [9.44]	.352 [8.93]	.332 [8.42]	.312 [7.91]	.292 [7.40]	.272 [6.89]	.252 [6.38]	.432 [10.97]	.412 [10.46]	.392 [9.95]	.372 [9.44]	.352 [8.93]	.332 [8.42]	.312 [7.91]	.292 [7.40]	.272 [6.89]	.252 [6.38]	
MS18275-1	25	3	5-1218848-3								MS18275-1	50	5	1-1218848-0							
MS18277-1	37	4	1218848-9								MS18276-1	37	4	1218848-9							
MS18279-1	25	3	1218848-8								MS18275-1	25	3	1218848-8							
MS18274-1	15	2	1218848-7								MS18274-1	15	2	1218848-7							
MS18273-1	9	1	1218848-6								MS18273-1	9	1	1218848-6							
MS18272-1	50	5	1218848-5								MS18277-1	50	5	1218848-5							
MS18276-1	37	4	1218848-4								MS18276-1	37	4	1218848-4							
MS18275-1	25	3	1218848-3								MS18275-1	25	3	1218848-3							
MS18274-1	15	2	1218848-2								MS18274-1	15	2	1218848-2							
MS18273-1	9	1	1218848-1								MS18273-1	9	1	1218848-1							
FINISH	DIM J	DIM H	DIM E	DIM D	DIM C	DIM B	DIM A	INSERT ARRANGEMENT	NO OF POS	SHELL SIZE	TYCD PART NO										

THIS DRAWING IS A CONTROLLED DOCUMENT. THE ORIGINAL IS KEPT AT THE MANUFACTURER'S FACILITY.

REVISIONS: 1. REVISION 1: 00779G=1218848

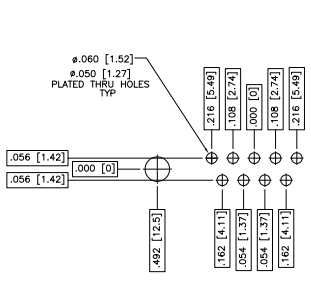
CUSTOMER DRAWING: 1218848

DATE: 18-03-08

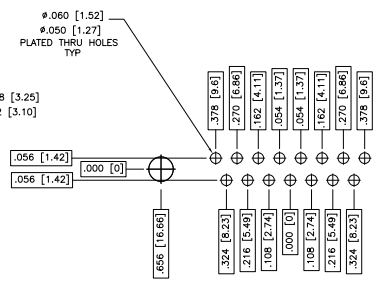
BY: CT

APPR: RL

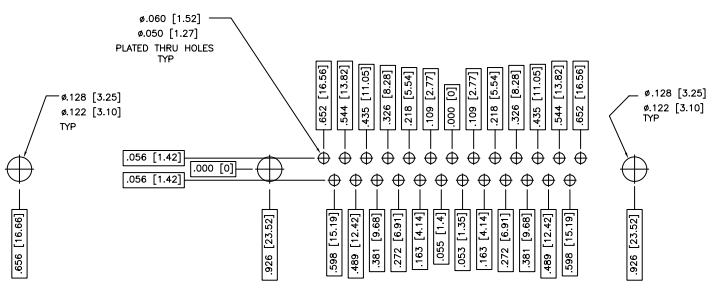
REV	DF	DO	DATE	DESCRIPTION	BY	APP
1				SEE SHEET 1		



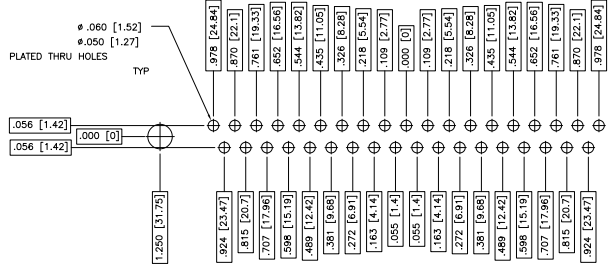
RECOMMENDED P.C. BOARD LAYOUT SHELL SIZE 1 (9 POSITION)



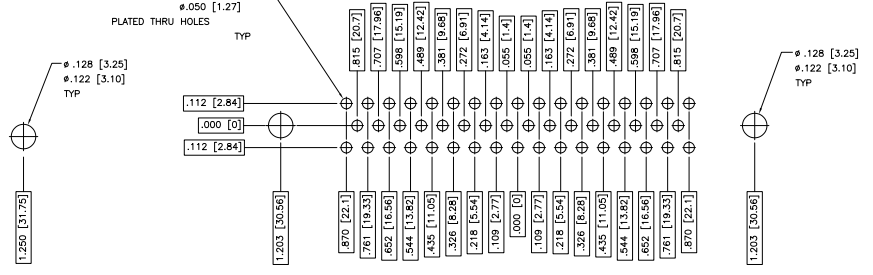
RECOMMENDED P.C. BOARD LAYOUT SHELL SIZE 2 (15 POSITION)



RECOMMENDED P.C. BOARD LAYOUT SHELL SIZE 3 (25 POSITION)



RECOMMENDED P.C. BOARD LAYOUT SHELL SIZE 4 (37 POSITION)



RECOMMENDED P.C. BOARD LAYOUT SHELL SIZE 5 (50 POSITION)

THIS DRAWING IS A CONTROLLED DOCUMENT

DESIGNED BY: JES	APPROVED BY: JES	DATE: 08/11/10
DRAWN BY: ALB	CHECKED BY: JES	DATE: 08/11/10
ISSUED BY: JES	REVISIONS: 1	DATE: 08/11/10

RECEIPTABLE ASSY, AMP/LMITE RIGHT ANGLE, SERIES 109 SIZE 1 THRU 5

100% ONE DAY DELIVERY TO CUSTOMER DRAWING

REV: 1.1 SHEET 2 OF 2