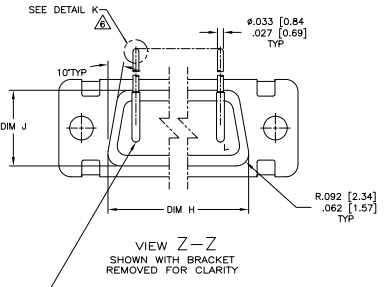
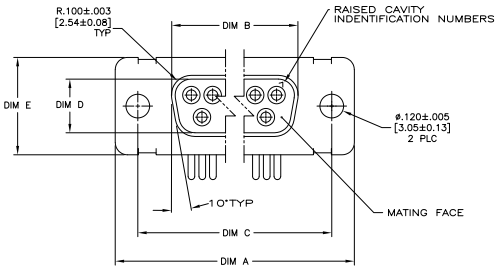
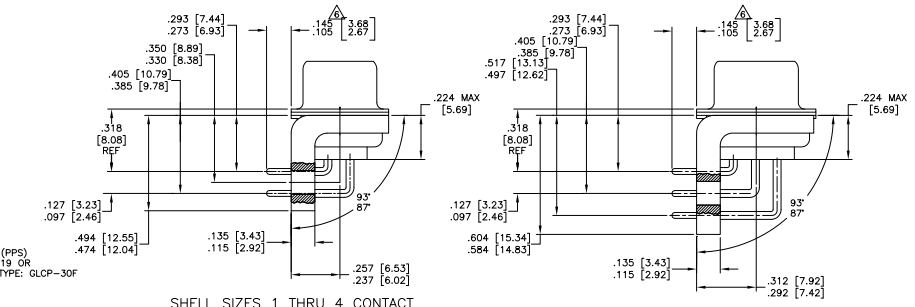
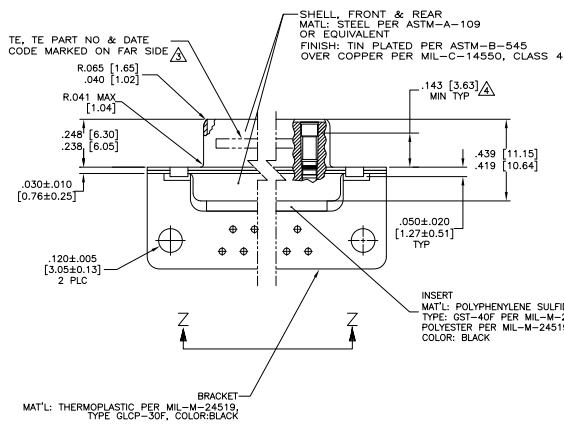


REV	DATE	DESCRIPTION	BY	CHKD	APP'D
1					
2					
3					
4					
5					
6					
7					
8					



CONTACT (QTY = NO. OF POSN)  
 MATL: BRASS PER ASTM-B-16, OR BERYLLIUM  
 COPPER PER ASTM-B-154  
 FINISH: GOLD PER MIL-G-45204, TYPE II,  
 GRADE C, CLASS 0 IN CONTACT MATING AREA  
 .000030 [0.0008] MIN THK GOLD PER MIL-G-45204  
 OVER .000050 [0.0013] MIN THK NICKEL  
 PER QQ-N-290.  
 BRIGHT TIN-LEAD .000050 [0.0013] MIN THK OVER  
 NICKEL .000050 [0.0013] MIN THK PER QQ-N-290  
 ON CONTACT BODY

- ▲ SEE SHEET 2 FOR RECOMMENDED P.C. BOARD LAYOUT. TRUE POSITION TOLERANCE FOR P.C. BOARD LAYOUT IS .010 [0.25] AT MAX MATERIAL CONDITION. SUGGESTED BOARD THICKNESS IS .125 [3.18]
- 2. THE CONNECTORS DESCRIBED IN THIS DOCUMENT MEET THE REQUIREMENTS OF MIL-C-24308 AND MATE WITH ANY PLUG CONNECTOR WITH SAME INSERT ARRANGEMENT.
- ▲ MARKED WITH .047 [1.19]-.062 [1.57] HIGH CHARACTERS. FAR SIDE REFERS TO THE WIDE SIDE OF THE KEYSTONE. NEAR SIDE REFERS TO THE NARROW SIDE OF THE KEYSTONE. IF THE FRONT SHELL IS TOO SMALL FOR THE TE PART NUMBER AND DATE CODE, MARKING SHALL BE SPLIT AS FOLLOWS:  
 A. TE PART NUMBER ON REAR SHELL, FAR SIDE.  
 B. "TE" AND DATE CODE ON FRONT SHELL, FAR SIDE.
- ▲ POINT OF ELECTRICAL ENGAGEMENT - AS MEASURED WITH A .0390 [0.991]-.0393 [0.998] DIA SQUARE ENDED TEST PIN.
- 5. THIS DRAWING SHALL BE INTERPRETED IN ACCORDANCE WITH APPLICABLE STANDARDS LISTED IN MIL-STD-100.
- ▲ SOLDER DIP PER MIL-STD-200 COMPOSITION Sn63 CONFORMING TO QQ-S-571 IN THE ENTIRE AREA OF DIMENSION SHOWN. 1218844-6 THRU -10 ONLY.



DIM J	DIM H	DIM E	DIM D	DIM C	DIM B	DIM A	INSERT ARRANGEMENT	NO OF POS	SHELL SIZE	TE PART NO.
.544 [13.82]	2.188 [55.58]	.620 [15.75]	.428 [10.87]	2.411 [61.24]	2.069 [52.55]	2.650 [67.31]	MS18277-1	50	5	1-1218844-0
.432 [10.97]	2.282 [57.96]	.509 [12.93]	.316 [8.03]	2.505 [63.63]	2.164 [54.97]	2.744 [69.70]	MS18276-1	37	4	1218844-9
.412 [10.46]	2.282 [57.96]	.479 [12.17]	.306 [7.77]	2.495 [63.37]	2.154 [54.71]	2.714 [68.94]	MS18275-1	25	3	1218844-8
.412 [10.46]	1.635 [41.53]	.509 [12.93]	.316 [8.03]	1.857 [47.17]	1.516 [38.51]	2.103 [53.42]	MS18274-1	15	2	1218844-7
.432 [10.97]	1.093 [27.76]	.509 [12.93]	.316 [8.03]	1.317 [33.45]	.976 [24.79]	1.556 [39.52]	MS18273-1	9	1	1218844-6
.412 [10.46]	.749 [19.02]	.479 [12.17]	.306 [7.77]	1.307 [33.20]	.866 [21.84]	1.526 [38.76]	MS18272-1	50	5	1218844-5
.432 [10.97]	2.282 [57.96]	.509 [12.93]	.316 [8.03]	2.505 [63.63]	2.164 [54.97]	2.744 [69.70]	MS18276-1	37	4	1218844-9
.412 [10.46]	1.635 [41.53]	.509 [12.93]	.316 [8.03]	1.857 [47.17]	1.516 [38.51]	2.103 [53.42]	MS18275-1	25	3	1218844-8
.412 [10.46]	1.635 [41.53]	.479 [12.17]	.306 [7.77]	1.847 [46.91]	1.506 [38.25]	2.073 [52.65]	MS18274-1	15	2	1218844-7
.432 [10.97]	1.093 [27.76]	.509 [12.93]	.316 [8.03]	1.317 [33.45]	.976 [24.79]	1.556 [39.52]	MS18273-1	9	1	1218844-6
.412 [10.46]	1.073 [27.25]	.479 [12.17]	.306 [7.77]	1.307 [33.20]	.866 [21.84]	1.526 [38.76]	MS18272-1	50	5	1218844-5
.432 [10.97]	.769 [19.53]	.509 [12.93]	.316 [8.03]	.989 [25.12]	.648 [16.46]	1.228 [31.18]	MS18273-1	9	1	1218844-1
.412 [10.46]	.749 [19.02]	.479 [12.17]	.306 [7.77]	.979 [24.87]	.638 [16.21]	1.198 [30.43]	MS18272-1	50	5	1218844-1

DETAIL K  
 SCALE 8:1  
 FOR 1218844-6 THRU -10 ONLY

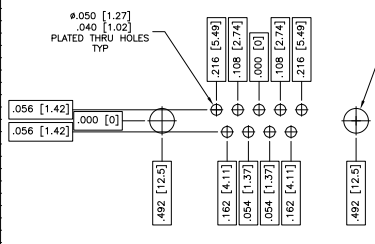
THIS DRAWING IS A CONTROLLED DOCUMENT. THE ORIGINAL IS KEPT AT THE MANUFACTURER'S FACILITY.

REVISIONS: 1. REVISION 1: ORIGINAL DESIGN. 2. REVISION 2: DIMENSIONAL CHANGES FOR MANUFACTURABILITY. 3. REVISION 3: MATERIAL CHANGES FOR SUPPLIER. 4. REVISION 4: DIMENSIONAL CHANGES FOR MANUFACTURABILITY. 5. REVISION 5: DIMENSIONAL CHANGES FOR MANUFACTURABILITY.

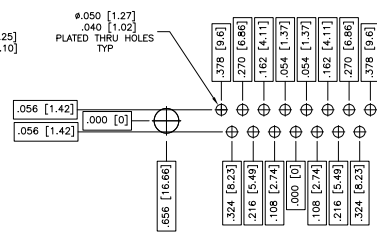
DATE: 10/07/98  
 DRAWING NO: 1218844  
 CUSTOMER DRAWING: YES

THIS DRAWING IS UNPUBLISHED  
 ALL INFORMATION IS UNCLASSIFIED  
 UNLESS INDICATED OTHERWISE

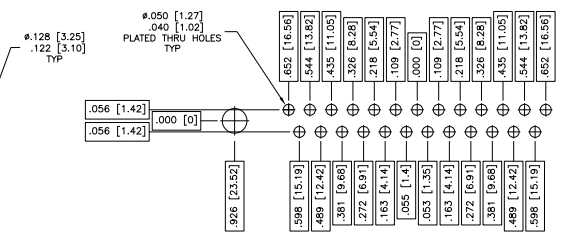
REV	DATE	BY	CHK	DESCRIPTION
1				
2				
3				
4				
5				
6				
7				
8				



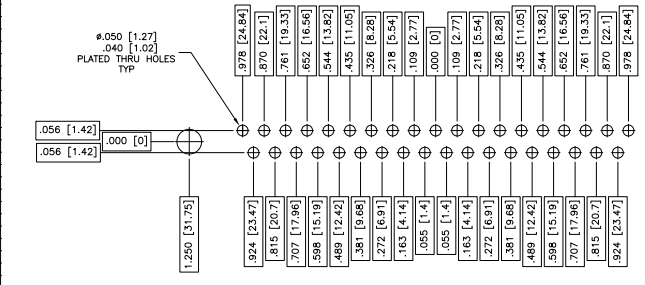
RECOMMENDED P.C. BOARD LAYOUT  
 SHELL SIZE 1 (9 POSITION)



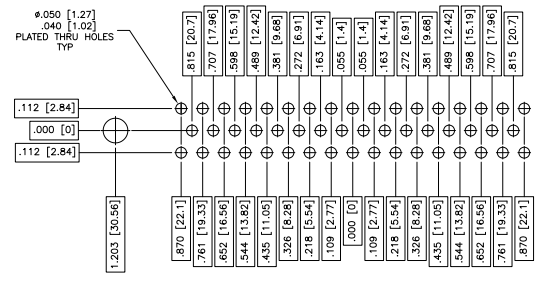
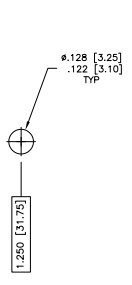
RECOMMENDED P.C. BOARD LAYOUT  
 SHELL SIZE 2 (15 POSITION)



RECOMMENDED P.C. BOARD LAYOUT  
 SHELL SIZE 3 (25 POSITION)



RECOMMENDED P.C. BOARD LAYOUT  
 SHELL SIZE 4 (37 POSITION)



RECOMMENDED P.C. BOARD LAYOUT  
 SHELL SIZE 5 (50 POSITION)

THIS DRAWING IS A CONTROLLED DOCUMENT.		REVISED BY: J. THOMAS	DATE: 1/10/03	DESIGNED BY: J. THOMAS	DATE: 1/10/03
DRAWN BY: J. THOMAS		CHECKED BY: J. THOMAS	DATE: 1/10/03	APPROVED BY: J. THOMAS	DATE: 1/10/03
TITLE: RECEPTACLE ASSY AMP/LMITE_RIGHT		PART NO: 1218844			
REV: A1		DATE: 1/10/03		DRAWN TO: 1218844	
CUSTOMER DRAWING		SHEET: 2 OF 2			