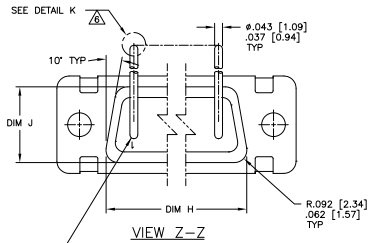
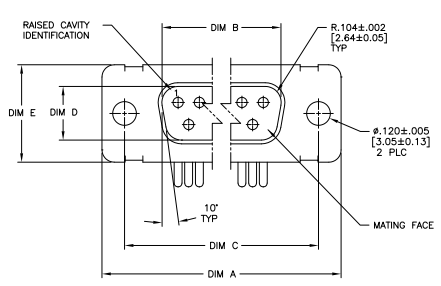
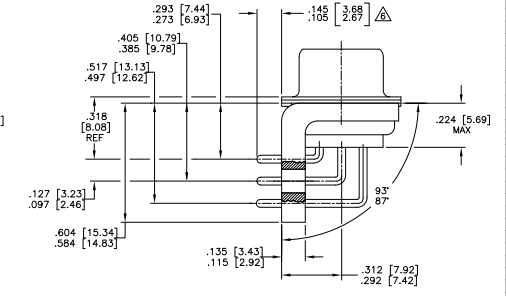
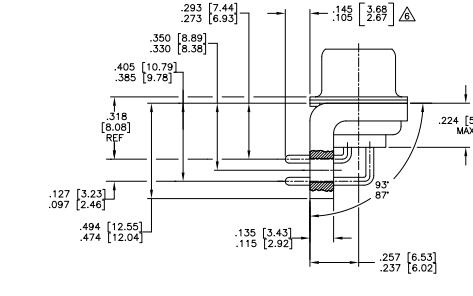
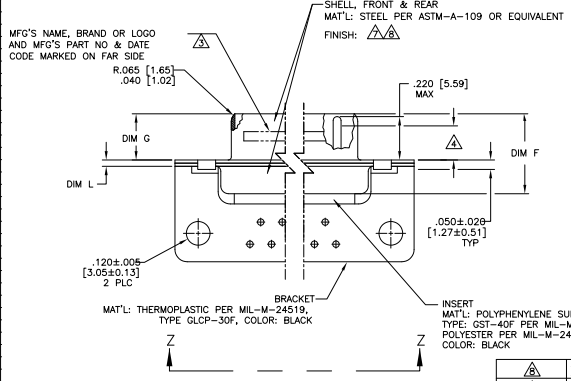


REV	DATE	DESCRIPTION	BY	CHK	APP
1	01-02-79	CT RL			
2	09-01-84	REVISED PER ECO-09-013174			

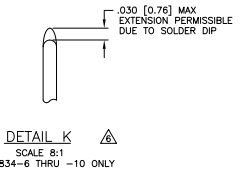


CONTACT (QTY = NO. OF POSN)
 MAT'L: BRASS PER ASTM-B-16, OR BERYLLIUM
 COPPER PER ASTM-B-194
 FINISH: GOLD PER MIL-C-45204, TYPE II,
 GRADE C, CLASS I IN CONTACT MATING AREA,
 .00010 [0.0003] MIN THK GOLD PER MIL-G-45204
 OVER .00050 [0.015] MIN THK NICKEL
 PER QQ-N-290 ON CONTACT BODY

- △ SEE SHEET 2 FOR RECOMMENDED P.C. BOARD LAYOUT. TRUE POSITION TOLERANCE FOR P.C. BOARD LAYOUT IS .010 [0.25] AT MAX MATERIAL CONDITION. SUGGESTED BOARD THICKNESS IS .062 [1.57]
- 2. THE CONNECTORS DESCRIBED IN THIS DOCUMENT MEET THE REQUIREMENTS OF MIL-C-24308 AND MATE WITH ANY RECEPTACLE CONNECTOR WITH SAME INSERT ARRANGEMENT.
- △ MARKED WITH .047 [1.19]-.062 [1.57] HIGH CHARACTERS. FAR SIDE REFERS TO THE WIDE SIDE OF THE KEYSTONE. NEAR SIDE REFERS TO THE NARROW SIDE OF THE KEYSTONE. IF THE FRONT SHELL IS TOO SMALL FOR MFG'S NAME, BRAND OR LOGO, MFG'S PART NUMBER AND DATE CODE, MARKING SHALL BE SPLIT AS FOLLOWS:
 - A. MFG'S PART NUMBER ON REAR SHELL, FAR SIDE.
 - B. MFG'S NAME, BRAND OR LOGO AND DATE CODE ON FRONT SHELL, FAR SIDE.
- △ REQUIREMENT FOR FULL PIN DIAMETER EXTENSION:
 - .159 [4.04] MIN, SHELL SIZES 1 AND 2.
 - .150 [3.81] MIN, SHELL SIZES 3, 4 AND 5.
- 5. THIS DRAWING SHALL BE INTERPRETED IN ACCORDANCE WITH APPLICABLE STANDARDS LISTED IN MIL-STD-100.
- △ SOLDER DIPPED PER MIL-STD-2000 COMPOSITION Sn63 CONFORMING TO QQ-S-571 IN THE ENTIRE AREA OF DIMENSION SHOWN. 1218834-6 THRU -10 ONLY.
- △ FINISH: TIN PER ASTM-B-545, .000200 MIN THK OVER COPPER PER AMS2418.
- △ FINISH: TIN PER ASTM-B-545, .000200 MIN THK OVER COPPER PER AMS2418.



FINISH	DIM L	DIM J	DIM H	DIM G	DIM F	DIM E	DIM D	DIM C	DIM B	DIM A	INSERT ARRANGEMENT	NO OF POS	SHELL SIZE	TYCO PART NO.
△	.049 [1.24]	.432 [10.97]	2.282 [57.96]	.236 [5.99]	.436 [11.07]	.509 [12.93]	.334 [8.48]	2.505 [63.63]	2.187 [54.97]	2.744 [69.70]	MS18276-1	37	4	5-1218834-4
△	.049 [1.24]	.444 [11.31]	2.188 [55.58]	.236 [5.99]	.436 [11.07]	.620 [15.75]	.446 [11.33]	2.411 [61.24]	2.084 [52.55]	2.650 [67.31]	MS18277-1	50	5	1-1218834-0
△	.049 [1.24]	.432 [10.97]	2.282 [57.96]	.236 [5.99]	.436 [11.07]	.509 [12.93]	.334 [8.48]	2.505 [63.63]	2.187 [54.97]	2.744 [69.70]	MS18276-1	37	4	1218834-9
△	.049 [1.24]	.432 [10.97]	2.282 [57.96]	.236 [5.99]	.436 [11.07]	.509 [12.93]	.334 [8.48]	2.505 [63.63]	2.187 [54.97]	2.744 [69.70]	MS18276-1	25	3	1218834-8
△	.049 [1.24]	.432 [10.97]	2.282 [57.96]	.236 [5.99]	.436 [11.07]	.509 [12.93]	.334 [8.48]	2.505 [63.63]	2.187 [54.97]	2.744 [69.70]	MS18276-1	15	2	1218834-7
△	.049 [1.24]	.432 [10.97]	2.282 [57.96]	.236 [5.99]	.436 [11.07]	.509 [12.93]	.334 [8.48]	2.505 [63.63]	2.187 [54.97]	2.744 [69.70]	MS18276-1	9	1	1218834-6
△	.049 [1.24]	.444 [11.31]	2.188 [55.58]	.236 [5.99]	.436 [11.07]	.620 [15.75]	.446 [11.33]	2.411 [61.24]	2.084 [52.55]	2.650 [67.31]	MS18277-1	50	5	1218834-5
△	.049 [1.24]	.432 [10.97]	2.282 [57.96]	.236 [5.99]	.436 [11.07]	.509 [12.93]	.334 [8.48]	2.505 [63.63]	2.187 [54.97]	2.744 [69.70]	MS18276-1	37	4	1218834-4
△	.049 [1.24]	.432 [10.97]	2.282 [57.96]	.236 [5.99]	.436 [11.07]	.509 [12.93]	.334 [8.48]	2.505 [63.63]	2.187 [54.97]	2.744 [69.70]	MS18276-1	25	3	1218834-3
△	.049 [1.24]	.432 [10.97]	2.282 [57.96]	.236 [5.99]	.436 [11.07]	.509 [12.93]	.334 [8.48]	2.505 [63.63]	2.187 [54.97]	2.744 [69.70]	MS18276-1	15	2	1218834-2
△	.049 [1.24]	.432 [10.97]	2.282 [57.96]	.236 [5.99]	.436 [11.07]	.509 [12.93]	.334 [8.48]	2.505 [63.63]	2.187 [54.97]	2.744 [69.70]	MS18276-1	9	1	1218834-1



DETAIL K
 SCALE 8:1
 FOR 1218834-6 THRU -10 ONLY

THIS DRAWING IS A CONTROLLED DOCUMENT.

DATE: 02-28-81
 DRAWN BY: J. THOMAS
 CHECKED BY: J. THOMAS
 DATE: 02-28-81
 DESIGNED BY: J. THOMAS
 DATE: 02-28-81
 APPROVED BY: J. THOMAS
 DATE: 02-28-81

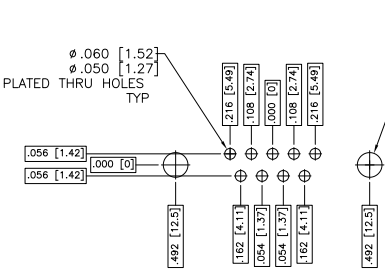
PLUG ASSY, AMPUMITE, RIGHT ANGLE
 SERIES 109, SIZE 1 THRU 5

SIZE: 109
 DRAWING NO: A100779
 REV: 1
 SHEET: 1 OF 2

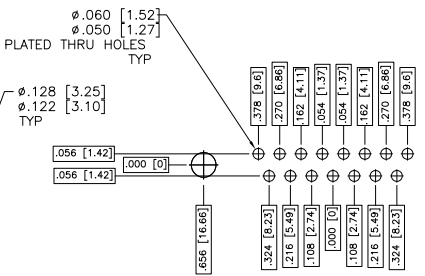
CUSTOMER DRAWING

THIS DRAWING IS UNPUBLISHED
 ALL RIGHTS RESERVED

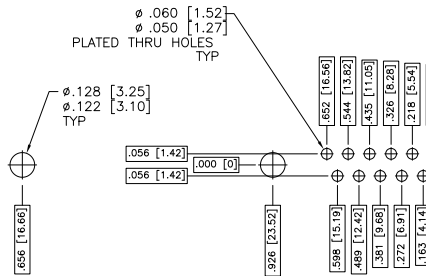
REV	DATE	DESCRIPTION	BY	APP'D
1		SEE SHEET 1		



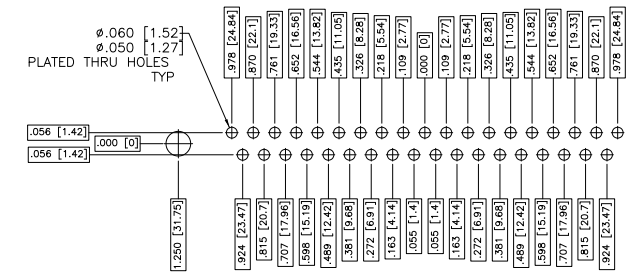
RECOMMENDED P.C. BOARD LAYOUT
 SHELL SIZE 1 (9 POSITION)



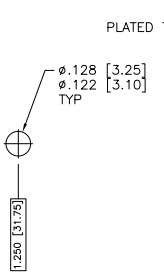
RECOMMENDED P.C. BOARD LAYOUT
 SHELL SIZE 2 (15 POSITION)



RECOMMENDED P.C. BOARD LAYOUT
 SHELL SIZE 3 (25 POSITION)



RECOMMENDED P.C. BOARD LAYOUT
 SHELL SIZE 4 (37 POSITION)



RECOMMENDED P.C. BOARD LAYOUT
 SHELL SIZE 5 (50 POSITION)

THIS DRAWING IS A CONTROLLED DOCUMENT.		REV. CONTROL	DATE	BY	APP'D
DESIGNER: []		REV. CONTROL	DATE	BY	APP'D
CHECKER: []		REV. CONTROL	DATE	BY	APP'D
DRAWN: []		REV. CONTROL	DATE	BY	APP'D
SEE CALLOUTS		REV. CONTROL	DATE	BY	APP'D
SEE CALLOUTS		REV. CONTROL	DATE	BY	APP'D
CUSTOMER DRAWING		REV. CONTROL	DATE	BY	APP'D
A1 00779		REV. CONTROL	DATE	BY	APP'D
G=1218834		REV. CONTROL	DATE	BY	APP'D
SIZE 4:1		REV. CONTROL	DATE	BY	APP'D
SHEET 2		REV. CONTROL	DATE	BY	APP'D
OF 2		REV. CONTROL	DATE	BY	APP'D