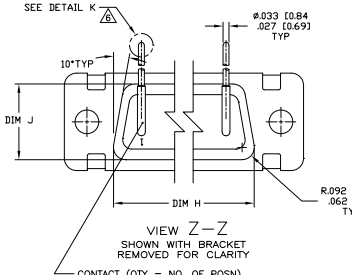
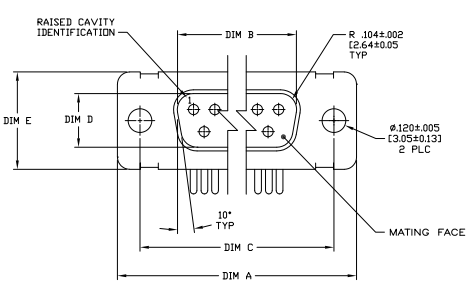


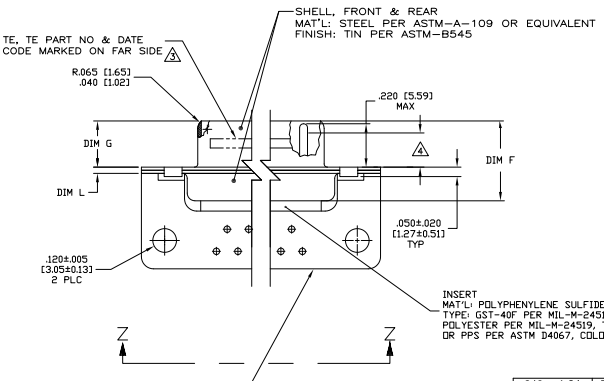
THIS DRAWING IS UNPUBLISHED
 UNLESS OTHERWISE SPECIFIED
 ALL INFORMATION IS UNCLASSIFIED
 UNLESS OTHERWISE SPECIFIED

REV	DATE	DESCRIPTION	BY	CHKD
1	04-01-08	CT RL		
2		REVISED PER ECO-09-00886		



CONTACT (QTY = NO. OF POSN)
 MAT'L: BRASS PER ASTM-B-16, OR BERYLLIUM
 COPPER PER ASTM-B-194
 FINISH: GOLD PER MIL-G-45204, TYPE II,
 GRADE C, CLASS I IN CONTACT MATING AREA,
 0.00010 [0.0003] MIN THK GOLD PER MIL-G-45204
 OVER .00050 [0.0013] MIN THK NICKEL
 PER QQ-N-290 ON CONTACT BODY

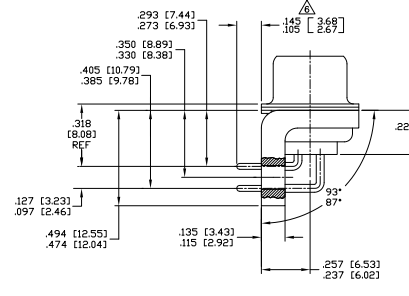
- SEE SHEET 2 FOR RECOMMENDED P.C. BOARD LAYOUT. TRUE POSITION TOLERANCE FOR P.C. BOARD LAYOUT IS .010 [0.25] AT MAX MATERIAL CONDITION. SUGGESTED BOARD THICKNESS IS .062 [1.57]
- THE CONNECTORS DESCRIBED IN THIS DOCUMENT MEET THE REQUIREMENTS OF MIL-C-24308 AND MATE WITH ANY RECEPTACLE CONNECTOR WITH SAME INSERT ARRANGEMENT.
- MARKED WITH .047 [1.19]-.062 [1.57] HIGH CHARACTERS. FAR SIDE REFERS TO THE WIDE SIDE OF THE KEYSTONE. NEAR SIDE REFERS TO THE NARROW SIDE OF THE KEYSTONE. IF THE FRONT SHELL IS TOO SMALL FOR "TE", TE PART NUMBER AND DATE CODE, MARKING SHALL BE SPLIT AS FOLLOWS:
 - A. TE PART NUMBER ON REAR SHELL, FAR SIDE.
 - B. "TE" AND DATE CODE ON FRONT SHELL, FAR SIDE.
- REQUIREMENT FOR FULL PIN DIAMETER EXTENSION:
 - .159 [4.04] MIN, SHELL SIZES 1 AND 2.
 - .150 [3.81] MIN, SHELL SIZES 3, 4 AND 5.
- THIS DRAWING SHALL BE INTERPRETED IN ACCORDANCE WITH APPLICABLE STANDARDS LISTED IN MIL-STD-100.
- SOLDER DIPPED PER MIL-STD-200 COMPOSITION S663 CONFORMING TO QQ-S-571 IN THE ENTIRE AREA OF DIMENSION SHOWN. 1218830-6 THRU -10 ONLY.



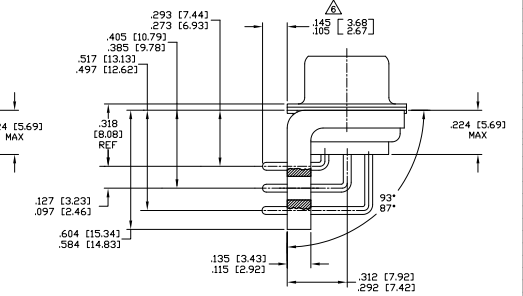
SHELL, FRONT & REAR
 MAT'L: STEEL PER ASTM-A-109 OR EQUIVALENT
 FINISH: TIN PER ASTM-B545

BRACKET
 MAT'L: THERMOPLASTIC PER MIL-M-24519,
 TYPE GLCP-30F, COLOR:BLACK

INSERT
 MAT'L: POLYPHENYLENE SULFIDE (PPS)
 TYPE: G37-40F PER MIL-M-24519 DR
 POLYESTER PER MIL-M-24519, TYPE: GLCP-30F
 DR PPS PER ASTM D4067, COLOR: BLACK

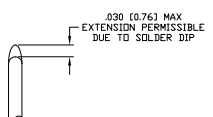


SHELL SIZES 1 THRU 4 CONTACT CONFIGURATION



SHELL SIZE 5 CONTACT CONFIGURATION

DIM L	DIM J	DIM H	DIM G	DIM F	DIM E	DIM D	DIM C	DIM B	DIM A	INSERT ARRANGEMENT	No. OF POS	SHELL SIZE	TE PART NO.
.049 [1.24]	.544 [13.82]	2.188 [55.58]	.236 [5.99]	.436 [11.07]	.620 [15.75]	.446 [11.33]	2.411 [61.24]	2.084 [52.55]	2.650 [67.31]	MS18277-1	50	5	1-1218830-0
.029 [0.74]	.324 [8.31]	2.188 [55.58]	.224 [5.69]	.416 [10.57]	.590 [14.99]	.436 [11.07]	2.401 [60.99]	2.074 [52.30]	2.620 [66.55]	MS18276-1	37	4	1218830-9
.049 [1.24]	.432 [10.97]	2.282 [57.96]	.236 [5.99]	.436 [11.07]	.509 [12.93]	.334 [8.48]	2.505 [63.63]	2.187 [54.97]	2.744 [69.70]	MS18275-1	37	4	1218830-8
.029 [0.74]	.412 [10.46]	2.282 [57.96]	.224 [5.69]	.416 [10.57]	.509 [12.93]	.334 [8.48]	2.495 [63.37]	2.177 [54.71]	2.714 [68.84]	MS18275-1	25	3	1218830-8
.029 [0.74]	.412 [10.46]	2.282 [57.96]	.224 [5.69]	.416 [10.57]	.479 [12.17]	.324 [8.23]	2.487 [62.91]	2.169 [54.55]	2.673 [67.29]	MS18274-1	15	2	1218830-7
.040 [1.02]	.432 [10.97]	1.933 [49.35]	.236 [5.99]	.432 [10.97]	.509 [12.93]	.334 [8.48]	2.411 [61.24]	2.084 [52.55]	2.650 [67.31]	MS18273-1	9	1	1218830-6
.020 [0.51]	.412 [10.46]	1.933 [49.35]	.224 [5.69]	.412 [10.46]	.479 [12.17]	.324 [8.23]	2.401 [60.99]	2.074 [52.30]	2.620 [66.55]	MS18273-1	50	5	1218830-5
.049 [1.24]	.432 [10.97]	2.282 [57.96]	.236 [5.99]	.436 [11.07]	.509 [12.93]	.334 [8.48]	2.505 [63.63]	2.187 [54.97]	2.744 [69.70]	MS18276-1	37	4	1218830-4
.029 [0.74]	.412 [10.46]	2.282 [57.96]	.224 [5.69]	.416 [10.57]	.509 [12.93]	.334 [8.48]	2.495 [63.37]	2.177 [54.71]	2.714 [68.84]	MS18275-1	25	3	1218830-3
.029 [0.74]	.412 [10.46]	1.635 [41.53]	.236 [5.99]	.436 [11.07]	.509 [12.93]	.334 [8.48]	2.411 [61.24]	2.084 [52.55]	2.650 [67.31]	MS18274-1	15	2	1218830-2
.040 [1.02]	.432 [10.97]	1.933 [49.35]	.236 [5.99]	.432 [10.97]	.509 [12.93]	.334 [8.48]	2.411 [61.24]	2.084 [52.55]	2.650 [67.31]	MS18273-1	9	1	1218830-1
.020 [0.51]	.412 [10.46]	1.933 [49.35]	.224 [5.69]	.412 [10.46]	.479 [12.17]	.324 [8.23]	2.401 [60.99]	2.074 [52.30]	2.620 [66.55]	MS18273-1	50	5	1218830-1



DETAIL K
 SCALE: B:1
 FOR 1218830-6 THRU -10 ONLY

THIS DRAWING IS A CONTROLLED DOCUMENT.

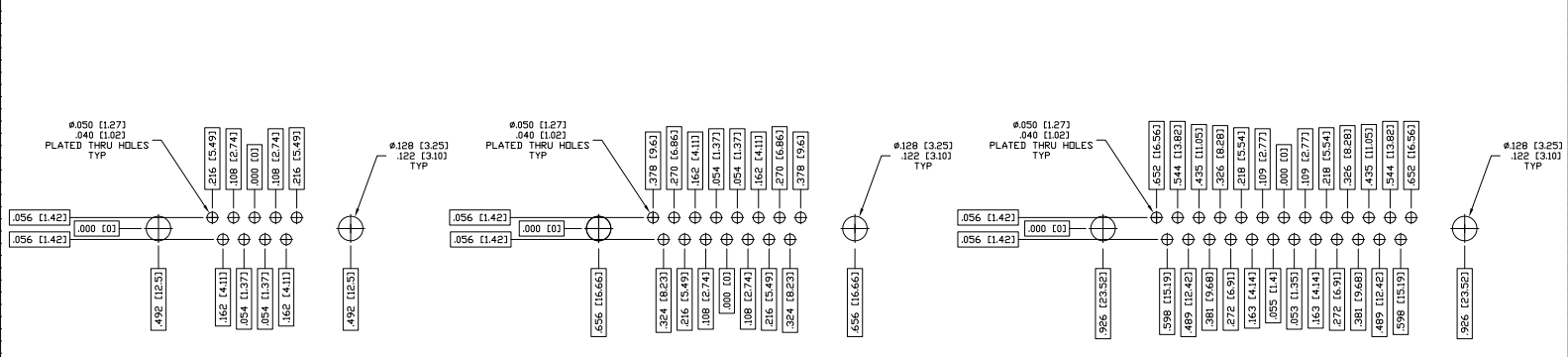
APPROVED: [Signature]

DATE: [Date]

REVISIONS: [Table]

Customer Drawing: [Table]

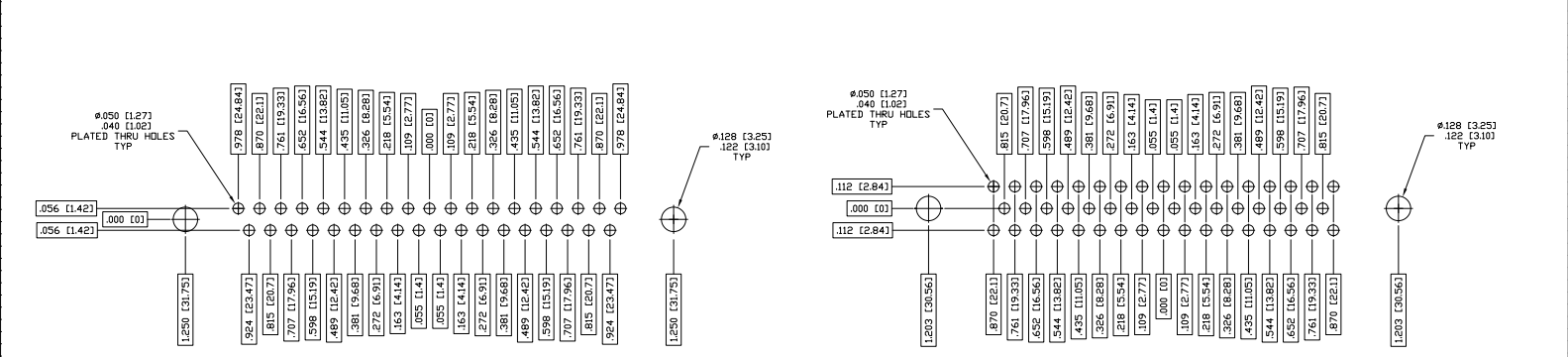
REV	DF	DO	DESCRIPTION	DATE	BY	APP
1	DF	DO	SEE SHEET 1	-	-	-



RECOMMENDED P.C. BOARD LAYOUT SHELL SIZE 1 (9 POSITION)

RECOMMENDED P.C. BOARD LAYOUT SHELL SIZE 2 (15 POSITION)

RECOMMENDED P.C. BOARD LAYOUT SHELL SIZE 3 (25 POSITION)



RECOMMENDED P.C. BOARD LAYOUT SHELL SIZE 4 (37 POSITION)

RECOMMENDED P.C. BOARD LAYOUT SHELL SIZE 5 (50 POSITION)

THIS DRAWING IS A CONTROLLED DOCUMENT.		TPO ELECTRONICS CORPORATION HARRISBURG, PA 17105-3608
DRAWING NO: 100779 REV: A DATE: 12/18/03	CUSTOMER DRAWING	PLUG ASSY-AMPLITE-RIGHT ANGLE, SERIES 109, SIZE 1 THRU 5 DRAWING NO: 1218830 REV: C DATE: 4/1 SHEET 2 OF 3