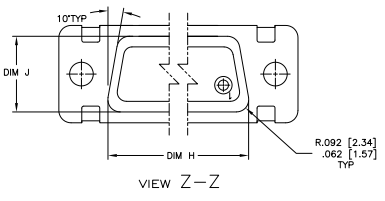
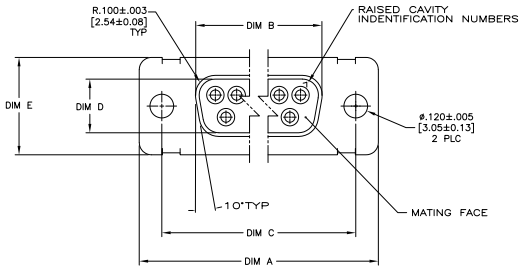
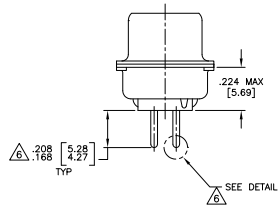
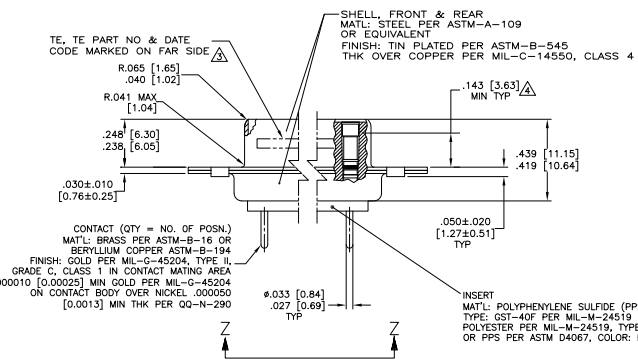


THIS DRAWING IS UNAPPROVED UNLESS INDICATED OTHERWISE
 © 2008 BY TYS ELECTRONICS CORPORATION ALL RIGHTS RESERVED

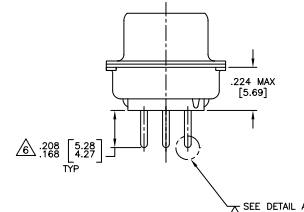
REV	DATE	DESCRIPTION	BY	CHK	APP
DF	AO				
C		REVISED PER ECO-08-013277			



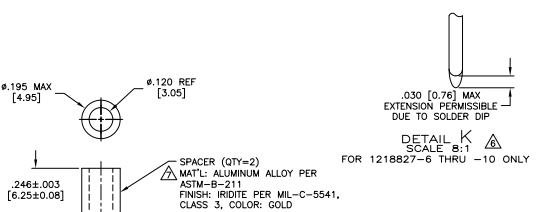
- △ SEE SHEET 2 FOR RECOMMENDED P.C. BOARD LAYOUT. TRUE POSITION TOLERANCE FOR P.C. BOARD LAYOUT IS .010 [0.25] AT MAX MATERIAL CONDITION. SUGGESTED BOARD THICKNESS IS .125 [3.18]
- 2. THE CONNECTORS DESCRIBED IN THIS DOCUMENT MEET THE REQUIREMENTS OF MIL-C-24308 AND MATE WITH ANY PLUG CONNECTOR WITH SAME INSERT ARRANGEMENT.
- △ MARKED WITH .047 [1.19]-.062 [1.57] HIGH CHARACTERS. FAR SIDE REFERS TO THE WIDE SIDE OF THE KEYSTONE. NEAR SIDE REFERS TO THE NARROW SIDE OF THE KEYSTONE. IF THE FRONT SHELL IS TOO SMALL FOR "TE", TE PART NUMBER AND DATE CODE, MARKING SHALL BE SPLIT AS FOLLOWS:
 - A. TE PART NUMBER ON REAR SHELL, FAR SIDE.
 - B. "TE" AND DATE CODE ON FRONT SHELL, FAR SIDE.
- △ POINT OF ELECTRICAL ENGAGEMENT - AS MEASURED WITH A .0390 [0.991]-.0393 [0.998] DIA SQUARE ENDED TEST PIN.
- 5. THIS DRAWING SHALL BE INTERPRETED IN ACCORDANCE WITH APPLICABLE STANDARDS LISTED IN MIL-STD-100.
- △ SOLDER DIP PER MIL-STD-2000 COMPOSITION Sn63 CONFORMING TO QQ-S-571 IN THE ENTIRE AREA OF DIMENSION SHOWN. 1218827-6 THRU -10 ONLY.
- △ SPACERS ARE SUPPLIED WITH CONNECTORS, NOT INSTALLED.



SHELL SIZES 1 THRU 4 CONTACT CONFIGURATION



SHELL SIZE 5 CONTACT CONFIGURATION



DETAIL K SCALE 8:1 FOR 1218827-6 THRU -10 ONLY

DIM J	DIM H	DIM E	DIM D	DIM C	DIM B	DIM A	INSERT ARRANGEMENT	NO OF POS	SHELL SIZE	TE PART NO.
.544 [13.82]	2.188 [55.58]	.620 [15.75]	.428 [10.87]	2.411 [61.24]	2.069 [52.55]	2.650 [67.31]	MS18277-1	50	5	1-1218827-0
.524 [13.31]	2.188 [55.58]	.590 [14.99]	.418 [10.62]	2.401 [60.99]	2.059 [52.30]	2.650 [67.31]	MS18276-1	37	4	1218827-9
.432 [10.97]	2.282 [57.96]	.509 [12.93]	.316 [8.03]	2.505 [63.63]	2.164 [54.97]	2.744 [69.70]	MS18275-1	25	3	1218827-8
.412 [10.46]	2.282 [57.96]	.479 [12.17]	.306 [7.77]	2.495 [63.37]	2.154 [54.71]	2.714 [68.94]	MS18274-1	15	2	1218827-7
.432 [10.97]	1.635 [41.53]	.509 [12.93]	.316 [8.03]	1.857 [47.17]	1.516 [38.51]	2.103 [53.42]	MS18273-1	9	1	1218827-5
.412 [10.46]	1.635 [41.53]	.479 [12.17]	.306 [7.77]	1.847 [46.91]	1.506 [38.25]	2.073 [52.65]	MS18272-1	9	1	1218827-4
.432 [10.97]	1.093 [27.76]	.509 [12.93]	.316 [8.03]	1.317 [33.45]	.976 [24.79]	1.556 [39.52]	MS18277-1	50	5	1218827-10
.412 [10.46]	1.073 [27.25]	.479 [12.17]	.306 [7.77]	1.307 [33.20]	.966 [24.54]	1.526 [38.76]	MS18276-1	37	4	1218827-9
.432 [10.97]	.769 [19.53]	.509 [12.93]	.316 [8.03]	.989 [25.12]	.648 [16.46]	1.228 [31.19]	MS18275-1	25	3	1218827-8
.412 [10.46]	.749 [19.02]	.479 [12.17]	.306 [7.77]	.979 [24.87]	.638 [16.21]	1.198 [30.43]	MS18274-1	15	2	1218827-7
.544 [13.82]	2.188 [55.58]	.620 [15.75]	.428 [10.87]	2.411 [61.24]	2.069 [52.55]	2.650 [67.31]	MS18277-1	50	5	1218827-10
.524 [13.31]	2.188 [55.58]	.590 [14.99]	.418 [10.62]	2.401 [60.99]	2.059 [52.30]	2.650 [67.31]	MS18276-1	37	4	1218827-9
.432 [10.97]	2.282 [57.96]	.509 [12.93]	.316 [8.03]	2.505 [63.63]	2.164 [54.97]	2.744 [69.70]	MS18275-1	25	3	1218827-8
.412 [10.46]	2.282 [57.96]	.479 [12.17]	.306 [7.77]	2.495 [63.37]	2.154 [54.71]	2.714 [68.94]	MS18274-1	15	2	1218827-7
.432 [10.97]	1.635 [41.53]	.509 [12.93]	.316 [8.03]	1.857 [47.17]	1.516 [38.51]	2.103 [53.42]	MS18273-1	9	1	1218827-5
.412 [10.46]	1.635 [41.53]	.479 [12.17]	.306 [7.77]	1.847 [46.91]	1.506 [38.25]	2.073 [52.65]	MS18272-1	9	1	1218827-4
.432 [10.97]	1.093 [27.76]	.509 [12.93]	.316 [8.03]	1.317 [33.45]	.976 [24.79]	1.556 [39.52]	MS18277-1	50	5	1218827-10
.412 [10.46]	1.073 [27.25]	.479 [12.17]	.306 [7.77]	1.307 [33.20]	.966 [24.54]	1.526 [38.76]	MS18276-1	37	4	1218827-9
.432 [10.97]	.769 [19.53]	.509 [12.93]	.316 [8.03]	.989 [25.12]	.648 [16.46]	1.228 [31.19]	MS18275-1	25	3	1218827-8
.412 [10.46]	.749 [19.02]	.479 [12.17]	.306 [7.77]	.979 [24.87]	.638 [16.21]	1.198 [30.43]	MS18274-1	15	2	1218827-7

THIS DRAWING IS A CONTROLLED DOCUMENT. THE ORIGINAL SHALL BE KEPT IN THE FILE OF THE PROJECT.

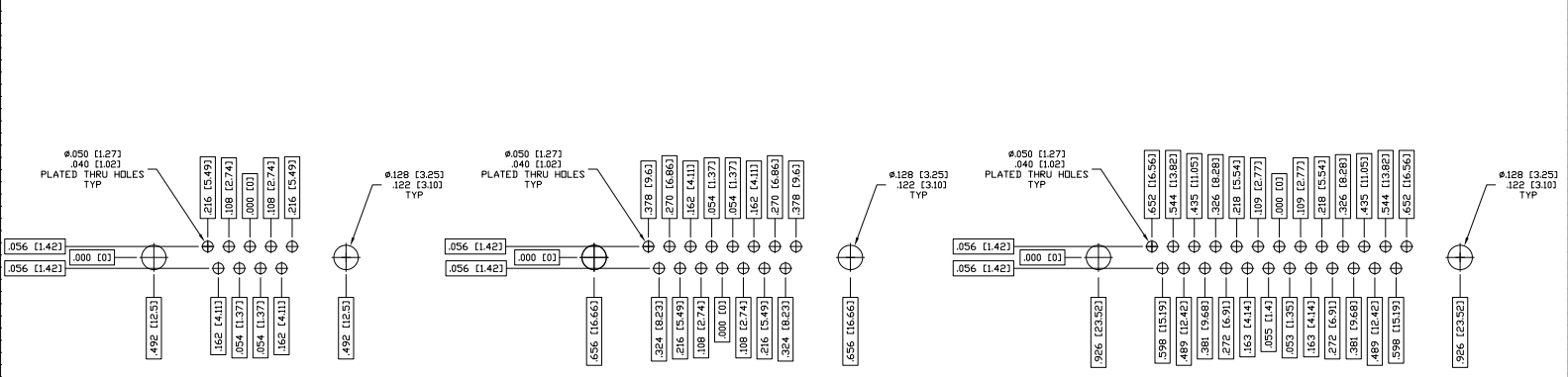
REVISIONS: 1. REVISED PER ECO-08-013277

CUSTOMER DRAWING: A100779G=1218827

DATE: 4-1 SHEET: 1 OF 2

THIS DRAWING IS UNPUBLISHED
 © 2005 TYS ELECTRONICS CORPORATION ALL RIGHTS RESERVED

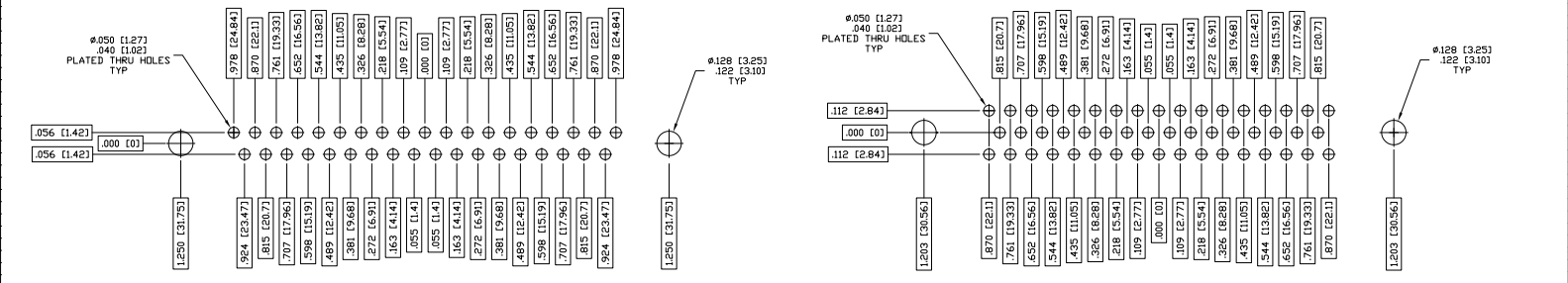
REV	DATE	DESCRIPTION	BY	APP'D
DF	AO			
		SEE SHEET 1		



RECOMMENDED P.C. BOARD LAYOUT
SHELL SIZE 1 (9 POSITION)

RECOMMENDED P.C. BOARD LAYOUT
SHELL SIZE 2 (15 POSITION)

RECOMMENDED P.C. BOARD LAYOUT
SHELL SIZE 3 (25 POSITION)



RECOMMENDED P.C. BOARD LAYOUT
SHELL SIZE 4 (37 POSITION)

RECOMMENDED P.C. BOARD LAYOUT
SHELL SIZE 5 (50 POSITION)

THIS DRAWING IS A CONTROLLED DOCUMENT.		J. P. THOMAS (SIGNED) TYPING TYS ELECTRONICS CORPORATION HARRISBURG, PA 17105-3608	
DIMENSIONS UNLESS OTHERWISE SPECIFIED DIMENSIONS ARE IN MILLIMETERS DECIMALS ARE TO 0.025 MM FRACTIONS ARE TO 1/32 IN	DRAWN BY CHAD BAKER CHECKED BY TYS ELECTRONICS CORPORATION	TITLE RECEPTACLE ASSY-AMPLIMITE, SERIES 109, SIZE 1 THRU 5	DATE 00779 DRAWING NO 1218827
CUSTOMER DRAWING SEE CALLOUTS	SIZE A1	SHEET 4-1	TOTAL SHEETS 2

440 480 REV 2/2005