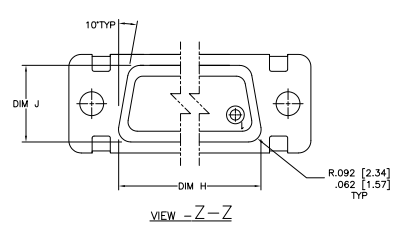
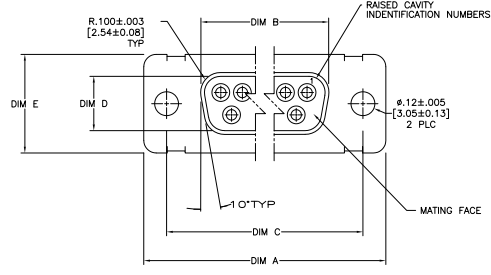
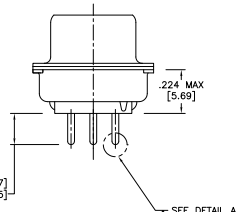
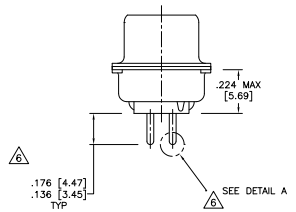
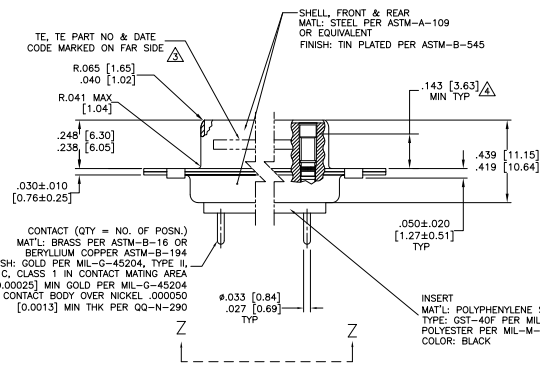


THIS DRAWING IS UNCLASSIFIED  
 UNLESS INDICATED OTHERWISE  
 © 2008 BY TYS ELECTRONICS CORPORATION ALL INFORMATION REPORT REQUIRING

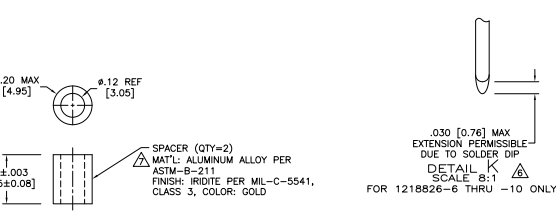
REV	DF	AO	DATE	REVISIONS
1				REVISION
2				REVISED PER ECO-09-00886



- SEE SHEET 2 FOR RECOMMENDED P.C. BOARD LAYOUT. TRUE POSITION TOLERANCE FOR P.C. BOARD LAYOUT IS .010 [0.25] AT MAX MATERIAL CONDITION. SUGGESTED BOARD THICKNESS IS .125 [3.18]
- THE CONNECTORS DESCRIBED IN THIS DOCUMENT MEET THE REQUIREMENTS OF MIL-C-24308 AND MATE WITH ANY PLUG CONNECTOR WITH SAME INSERT ARRANGEMENT.
- MARKED WITH .047 [1.19]-.062 [1.57] HIGH CHARACTERS. FAR SIDE REFERS TO THE WIDE SIDE OF THE KEYSTONE. NEAR SIDE REFERS TO THE NARROW SIDE OF THE KEYSTONE. IF THE FRONT SHELL IS TOO SMALL FOR "TE", TE PART NUMBER AND DATE CODE, MARKING SHALL BE SPLIT AS FOLLOWS:
  - A. TE PART NUMBER ON REAR SHELL, FAR SIDE.
  - B. "TE" AND DATE CODE ON FRONT SHELL, FAR SIDE.
- POINT OF ELECTRICAL ENGAGEMENT - AS MEASURED WITH A .0390 [0.991]-.0393 [0.998] DIA SQUARE ENDED TEST PIN.
- THIS DRAWING SHALL BE INTERPRETED IN ACCORDANCE WITH APPLICABLE STANDARDS LISTED IN MIL-STD-100
- SOLDER DIP PER MIL-STD-2000 COMPOSITION S63 CONFORMING TO QQ-S-571 IN THE ENTIRE AREA OF DIMENSION SHOWN. 1218826-6 THRU -10 ONLY.
- SPACERS ARE SUPPLIED WITH CONNECTORS, NOT INSTALLED.



SHELL SIZES 1 THRU 4 CONTACT CONFIGURATION										SHELL SIZE 5 CONTACT CONFIGURATION									
DIM J	DIM H	DIM E	DIM D	DIM C	DIM B	DIM A	NO. OF POS.	TE ARRANGEMENT	TE PART NO.	DIM J	DIM H	DIM E	DIM D	DIM C	DIM B	DIM A	NO. OF POS.	TE ARRANGEMENT	TE PART NO.
.544 [13.82]	2.188 [55.58]	.650 [16.75]	.428 [10.87]	2.411 [61.24]	2.089 [52.55]	2.650 [67.31]	50	5	1-1218826-6	.544 [13.82]	2.188 [55.58]	.650 [16.75]	.428 [10.87]	2.411 [61.24]	2.089 [52.55]	2.650 [67.31]	50	5	1-1218826-6
.504 [12.81]	2.168 [55.07]	.650 [16.75]	.418 [10.66]	2.401 [60.99]	2.089 [52.55]	2.650 [67.31]	37	4	1218826-9	.504 [12.81]	2.168 [55.07]	.650 [16.75]	.418 [10.66]	2.401 [60.99]	2.089 [52.55]	2.650 [67.31]	37	4	1218826-9
.432 [10.97]	2.282 [57.96]	.509 [12.93]	.316 [8.03]	2.505 [63.63]	2.164 [54.97]	2.744 [69.70]	25	3	1218826-8	.432 [10.97]	2.282 [57.96]	.509 [12.93]	.316 [8.03]	2.505 [63.63]	2.164 [54.97]	2.744 [69.70]	25	3	1218826-8
.432 [10.97]	1.635 [41.53]	.509 [12.93]	.316 [8.03]	1.857 [47.17]	1.516 [38.51]	2.103 [53.42]	15	2	1218826-7	.432 [10.97]	1.635 [41.53]	.509 [12.93]	.316 [8.03]	1.857 [47.17]	1.516 [38.51]	2.103 [53.42]	15	2	1218826-7
.412 [10.46]	1.615 [41.02]	.479 [12.17]	.306 [7.77]	1.847 [46.91]	1.506 [38.25]	2.073 [52.85]	9	1	1218826-5	.412 [10.46]	1.615 [41.02]	.479 [12.17]	.306 [7.77]	1.847 [46.91]	1.506 [38.25]	2.073 [52.85]	9	1	1218826-5
.432 [10.97]	1.003 [25.78]	.509 [12.93]	.316 [8.03]	1.317 [33.45]	.978 [24.79]	1.556 [39.52]	37	4	1218826-4	.432 [10.97]	1.003 [25.78]	.509 [12.93]	.316 [8.03]	1.317 [33.45]	.978 [24.79]	1.556 [39.52]	37	4	1218826-4
.412 [10.46]	.749 [19.02]	.479 [12.17]	.306 [7.77]	1.307 [33.20]	.966 [24.54]	1.526 [38.76]	15	2	1218826-3	.412 [10.46]	.749 [19.02]	.479 [12.17]	.306 [7.77]	1.307 [33.20]	.966 [24.54]	1.526 [38.76]	15	2	1218826-3
.432 [10.97]	1.635 [41.53]	.509 [12.93]	.316 [8.03]	1.857 [47.17]	1.516 [38.51]	2.103 [53.42]	25	3	1218826-2	.432 [10.97]	1.635 [41.53]	.509 [12.93]	.316 [8.03]	1.857 [47.17]	1.516 [38.51]	2.103 [53.42]	25	3	1218826-2
.412 [10.46]	1.615 [41.02]	.479 [12.17]	.306 [7.77]	1.847 [46.91]	1.506 [38.25]	2.073 [52.85]	15	2	1218826-1	.412 [10.46]	1.615 [41.02]	.479 [12.17]	.306 [7.77]	1.847 [46.91]	1.506 [38.25]	2.073 [52.85]	15	2	1218826-1
.432 [10.97]	1.003 [25.78]	.509 [12.93]	.316 [8.03]	1.317 [33.45]	.978 [24.79]	1.556 [39.52]	37	4	1218826-0	.432 [10.97]	1.003 [25.78]	.509 [12.93]	.316 [8.03]	1.317 [33.45]	.978 [24.79]	1.556 [39.52]	37	4	1218826-0
.412 [10.46]	.749 [19.02]	.479 [12.17]	.306 [7.77]	1.307 [33.20]	.966 [24.54]	1.526 [38.76]	15	2	1218826-0	.412 [10.46]	.749 [19.02]	.479 [12.17]	.306 [7.77]	1.307 [33.20]	.966 [24.54]	1.526 [38.76]	15	2	1218826-0



THIS DRAWING IS A CONTROLLED DOCUMENT. THE FOLLOWING INFORMATION IS FOR THE CUSTOMER'S USE ONLY.

DESIGNED BY	DESIGNED DATE	DESIGNED BY	DESIGNED DATE
DRIVEN BY	DRIVEN DATE	DRIVEN BY	DRIVEN DATE
APPROVED BY	APPROVED DATE	APPROVED BY	APPROVED DATE
DATE	DATE	DATE	DATE

RECEPTACLE ASSY, AMPLETE, SERIES 109, SIZE 1 THRU 5

SEE CALLOUTS

CUSTOMER DRAWING

DATE: 4-1

