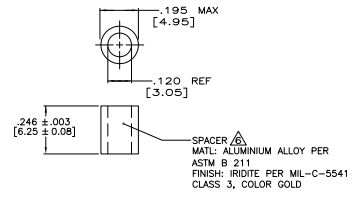
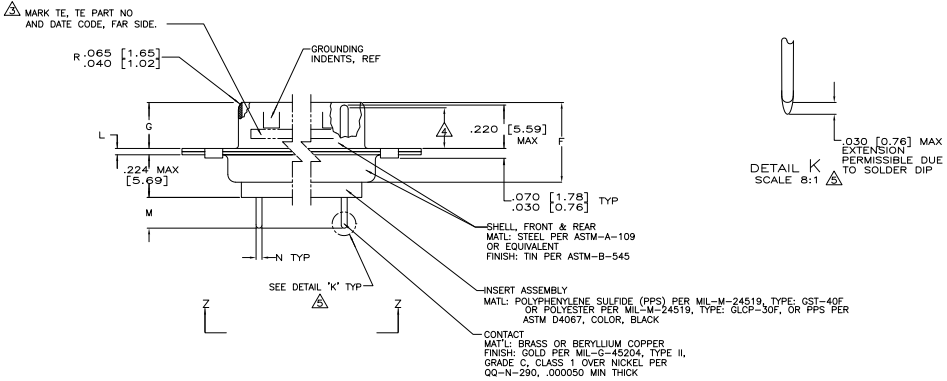


- △ SEE SHEET 2 FOR RECOMMENDED P.C. BOARD LAYOUT. TRUE POSITION TOLERANCE FOR P.C. BOARD LAYOUT IS .010 [0.25] AT MAX MATERIAL CONDITION. SUGGESTED BOARD THICKNESS IS .094 [2.39]
- △ THE CONNECTORS DESCRIBED IN THIS DOCUMENT MATE WITH ANY RECEPTACLE CONNECTOR WITH THE SAME INSERT ARRANGEMENT.
- △ MARKED WITH .047 [1.19]-.062 [1.57] HIGH CHARACTERS. FAR SIDE REFERS TO THE WIDE SIDE OF THE KEYSTONE. NEAR SIDE REFERS TO THE NARROW SIDE OF THE KEYSTONE. IF THE FRONT SHELL IS TOO SMALL FOR "TE", TE PART NUMBER AND DATE CODE, THEN SPLIT AS FOLLOWS:  
A. TE PART NUMBER ON REAR SHELL, NEAR SIDE.  
B. "TE" AND DATE CODE ON FRONT SHELL, NEAR SIDE.
- △ REQUIREMENT FOR FULL PIN DIAMETER EXTENSION:  
.159 [4.04] MIN. SHELL SIZES 1 AND 2.  
.150 [3.81] MIN. SHELL SIZES 3 AND 4.
- △ SOLDER DIPPED PER MIL-STD-2000 COMPOSITION Sn63 CONFORMING TO QQ-S-571. COVERAGE SHALL BE COMPLETE TO A DISTANCE .020 [0.51] MAX FROM INSERT ASSEMBLY.
- △ SPACERS (QTY 2) ARE SUPPLIED WITH CONNECTORS (NOT ATTACHED TO THE CONNECTOR).
- 7. DIMENSIONS APPLY PRIOR TO SOLDER DIPPING.

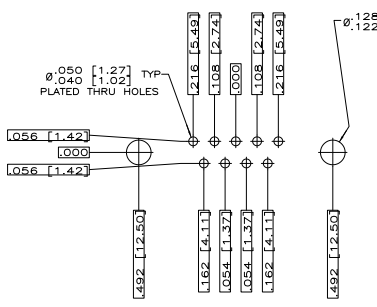


.043 [1.09]	.208 [5.26]	.049 [1.24]	.544 [13.82]	2.188 [55.58]	.236 [5.99]	.436 [11.07]	.620 [15.75]	.446 [11.33]	2.411 [61.24]	2.084 [52.93]	2.650 [67.31]	MS18277-1	50	5	1218377-5	1-1218377-0
.037 [0.94]	.188 [4.77]	.029 [0.74]	.524 [13.31]	2.168 [55.07]	.224 [5.69]	.418 [10.67]	.590 [14.96]	.436 [11.07]	2.401 [60.99]	2.074 [52.68]	2.620 [66.55]	MS18276-1	37	4	1218377-4	1218377-9
.043 [1.09]	.208 [5.26]	.049 [1.24]	.432 [10.97]	2.282 [57.96]	.236 [5.99]	.436 [11.07]	.509 [12.93]	.334 [8.48]	2.505 [63.63]	2.187 [55.55]	2.744 [69.70]	MS18275-1	25	3	1218377-3	1218377-8
.043 [1.09]	.208 [5.26]	.049 [1.24]	.432 [10.97]	1.636 [41.53]	.236 [5.99]	.436 [11.07]	.509 [12.93]	.334 [8.48]	1.857 [47.17]	1.539 [39.09]	2.103 [53.42]	MS18274-1	15	2	1218377-2	1218377-7
.037 [0.94]	.188 [4.77]	.029 [0.74]	.412 [10.46]	1.615 [41.02]	.224 [5.69]	.418 [10.67]	.478 [12.17]	.324 [8.23]	1.847 [46.91]	1.529 [38.84]	2.073 [52.65]	MS18273-1	9	1	1218377-1	1218377-6
.043 [1.09]	.208 [5.26]	.040 [1.02]	.432 [10.97]	1.093 [27.76]	.236 [5.99]	.432 [10.97]	.509 [12.93]	.334 [8.48]	1.317 [33.45]	.999 [25.12]	1.556 [39.52]	MS18273-1	9	1	1218377-1	1218377-5
.043 [1.09]	.208 [5.26]	.040 [1.02]	.412 [10.46]	1.073 [27.25]	.229 [5.82]	.412 [10.46]	.478 [12.17]	.324 [8.23]	1.307 [33.20]	.989 [25.12]	1.526 [38.76]	MS18273-1	9	1	1218377-1	1218377-4
.043 [1.09]	.208 [5.26]	.040 [1.02]	.432 [10.97]	.769 [19.53]	.236 [5.99]	.432 [10.97]	.509 [12.93]	.334 [8.48]	.989 [25.12]	.671 [17.04]	1.228 [31.19]	MS18273-1	9	1	1218377-1	1218377-3
.043 [1.09]	.208 [5.26]	.049 [1.24]	.544 [13.82]	2.188 [55.58]	.236 [5.99]	.436 [11.07]	.620 [15.75]	.446 [11.33]	2.411 [61.24]	2.084 [52.93]	2.650 [67.31]	MS18277-1	50	5	1218377-5	1218377-2
.037 [0.94]	.188 [4.77]	.029 [0.74]	.524 [13.31]	2.168 [55.07]	.224 [5.69]	.418 [10.67]	.590 [14.96]	.436 [11.07]	2.401 [60.99]	2.074 [52.68]	2.620 [66.55]	MS18276-1	37	4	1218377-4	1218377-1
.043 [1.09]	.208 [5.26]	.049 [1.24]	.432 [10.97]	2.282 [57.96]	.236 [5.99]	.436 [11.07]	.509 [12.93]	.334 [8.48]	2.505 [63.63]	2.187 [55.55]	2.744 [69.70]	MS18275-1	25	3	1218377-3	1218377-4
.043 [1.09]	.208 [5.26]	.049 [1.24]	.432 [10.97]	1.636 [41.53]	.236 [5.99]	.436 [11.07]	.509 [12.93]	.334 [8.48]	1.857 [47.17]	1.539 [39.09]	2.103 [53.42]	MS18274-1	15	2	1218377-2	1218377-3
.037 [0.94]	.188 [4.77]	.029 [0.74]	.412 [10.46]	1.615 [41.02]	.224 [5.69]	.418 [10.67]	.478 [12.17]	.324 [8.23]	1.847 [46.91]	1.529 [38.84]	2.073 [52.65]	MS18273-1	9	1	1218377-1	1218377-2
.043 [1.09]	.208 [5.26]	.040 [1.02]	.432 [10.97]	.769 [19.53]	.236 [5.99]	.432 [10.97]	.509 [12.93]	.334 [8.48]	.989 [25.12]	.671 [17.04]	1.228 [31.19]	MS18273-1	9	1	1218377-1	1218377-1
.037 [0.94]	.188 [4.77]	.020 [0.51]	.412 [10.46]	.749 [19.02]	.229 [5.82]	.412 [10.46]	.478 [12.17]	.324 [8.23]	.979 [24.87]	.661 [16.91]	1.198 [30.43]	MS18273-1	9	1	1218377-1	1218377-5

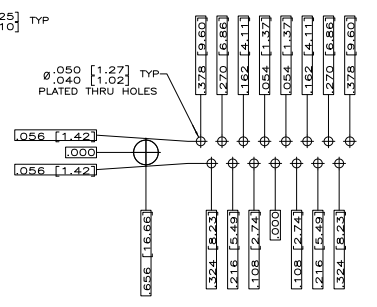
THIS DRAWING IS A CONTROLLED DOCUMENT. IT IS THE PROPERTY OF THE ELECTRONIC CORPORATION. IT IS TO BE KEPT IN CONFIDENCE AND NOT TO BE REPRODUCED OR DISCLOSED TO ANY OTHER PARTY WITHOUT THE WRITTEN PERMISSION OF THE ELECTRONIC CORPORATION.

DATE: 01/07/79  
 SIZE: 20 POSTED PCB BOARD CONTACTS  
 SERIES: 109  
 DRAWING NO: A100779G=1218377  
 CUSTOMER DRAWING

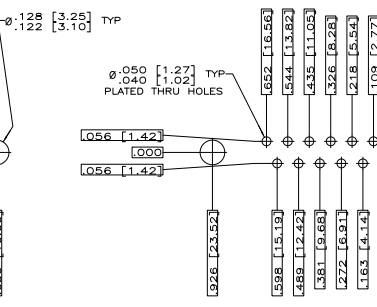
REV	DATE	DESCRIPTION	BY	APP'D
1		SEE SHEET 1		



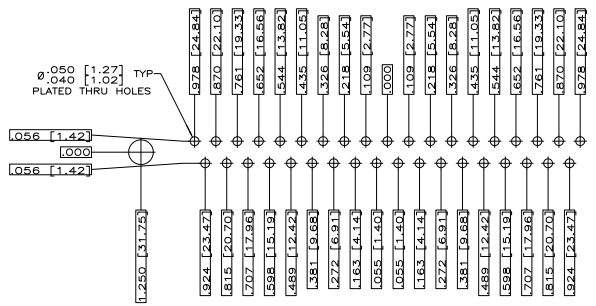
RECOMMENDED P.C. BOARD LAYOUT  
 SHELL SIZE 1 (9 POSITION)



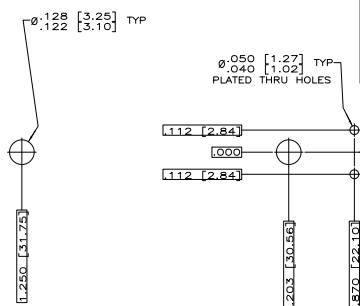
RECOMMENDED P.C. BOARD LAYOUT  
 SHELL SIZE 2 (15 POSITION)



RECOMMENDED P.C. BOARD LAYOUT  
 SHELL SIZE 3 (25 POSITION)



RECOMMENDED P.C. BOARD LAYOUT  
 SHELL SIZE 4 (37 POSITION)



RECOMMENDED P.C. BOARD LAYOUT  
 SHELL SIZE 5 (50 POSITION)

THIS DRAWING IS A CONTROLLED DOCUMENT.		REV. C. THOMAS 11/09/10		TYP Electronics		TYP Electronics Corporation Harrisburg, PA 17105-3808	
DESIGNER	APPROVED	DESIGNER	APPROVED	DATE	REV	AMPLITUDE PLUG ASSY, LOW PROFILE SIZE 20 POSTED P.C. BOARD CONTACTS SERIES 109	
DATE	DATE	DATE	DATE	DATE	DATE	DATE	DATE
SEE CALLOUTS	SEE CALLOUTS	SEE CALLOUTS	SEE CALLOUTS	SEE CALLOUTS	SEE CALLOUTS	SEE CALLOUTS	SEE CALLOUTS
CUSTOMER DRAWING	REV. A1	DATE 00779	DATE 1218377	DATE	DATE	DATE	DATE