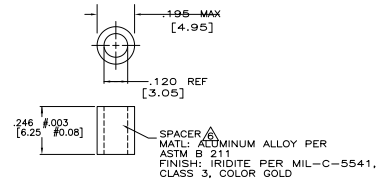
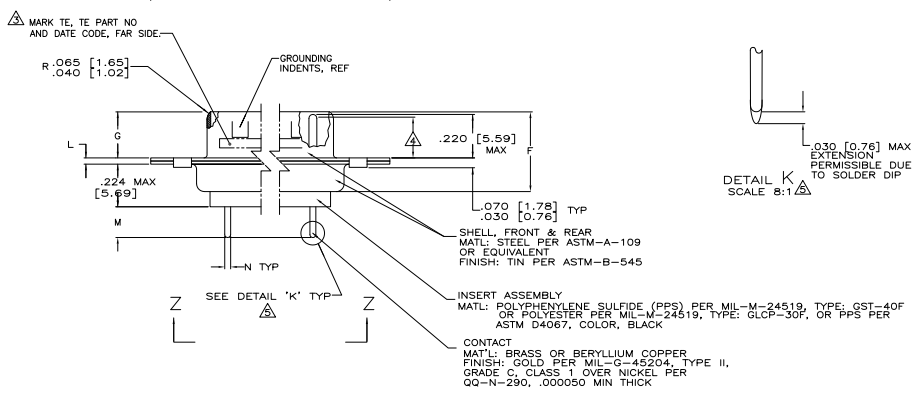


- △ SEE SHEET 2 FOR RECOMMENDED P.C. BOARD LAYOUT. TRUE POSITION TOLERANCE FOR P.C. BOARD LAYOUT IS .010 [0.25] AT MAX MATERIAL CONDITION. SUGGESTED BOARD THICKNESS IS .094 [2.39]
- △ THE CONNECTORS DESCRIBED IN THIS DOCUMENT MATE WITH ANY RECEPTACLE CONNECTOR WITH THE SAME INSERT ARRANGEMENT.
- △ MARKED WITH .047 [1.19]-.062 [1.57] HIGH CHARACTERS. FAR SIDE REFERS TO THE WIDE SIDE OF THE KEYSTONE. NEAR SIDE REFERS TO THE NARROW SIDE OF THE KEYSTONE. IF THE FRONT SHELL IS TOO SMALL FOR "TE", TE PART NUMBER AND DATE CODE, THEN SPLIT AS FOLLOWS:
 A. TE PART NUMBER ON REAR SHELL, NEAR SIDE.
 B. "TE" AND DATE CODE ON FRONT SHELL, NEAR SIDE.
- △ REQUIREMENT FOR FULL PIN DIAMETER EXTENSION:
 .159 [4.04] MIN, SHELL SIZES 1 AND 2.
 .150 [3.81] MIN, SHELL SIZES 3 AND 4.
- △ SOLDER DIPPED PER MIL-STD-2000 COMPOSITION Sn63 CONFORMING TO QQ-5-571. COVERAGE SHALL BE COMPLETE TO A DISTANCE .020 [0.51] MAX FROM INSERT ASSEMBLY.
- △ SPACERS (QTY 2) ARE SUPPLIED WITH CONNECTORS (NOT ATTACHED TO THE CONNECTOR).
 7. DIMENSIONS APPLY PRIOR TO SOLDER DIPPING.



.043 [1.09]	.176 [4.47]	.049 [1.24]	.544 [13.82]	2.188 [55.58]	.236 [5.99]	.436 [11.07]	.620 [15.75]	.446 [11.33]	2.411 [61.24]	2.084 [52.93]	2.650 [67.31]	MS18277-1	50	5	1218376-5	1-1218376-0
.037 [0.94]	.136 [3.45]	.029 [0.74]	.324 [8.31]	1.168 [29.67]	.224 [5.69]	.416 [10.67]	.590 [14.96]	.436 [11.07]	2.401 [60.99]	2.074 [52.88]	2.620 [66.55]	MS18276-1	27	4	1218376-4	1218376-9
.043 [1.09]	.176 [4.47]	.049 [1.24]	.432 [10.97]	2.282 [57.96]	.236 [5.99]	.436 [11.07]	.509 [12.93]	.334 [8.48]	2.505 [63.63]	2.187 [55.55]	2.744 [69.70]	MS18276-1	37	4	1218376-4	1218376-8
.037 [0.94]	.136 [3.45]	.029 [0.74]	.412 [10.46]	2.282 [57.96]	.224 [5.69]	.416 [10.67]	.509 [12.93]	.334 [8.48]	2.496 [63.37]	2.177 [55.30]	2.714 [68.94]	MS18275-1	25	3	1218376-3	1218376-8
.043 [1.09]	.176 [4.47]	.049 [1.24]	.432 [10.97]	1.635 [41.53]	.236 [5.99]	.436 [11.07]	.509 [12.93]	.334 [8.48]	1.857 [47.17]	1.539 [39.09]	2.103 [53.42]	MS18274-1	15	2	1218376-2	1218376-7
.037 [0.94]	.136 [3.45]	.029 [0.74]	.412 [10.46]	1.635 [41.53]	.224 [5.69]	.416 [10.67]	.479 [12.17]	.324 [8.23]	1.847 [46.91]	1.529 [38.84]	2.073 [52.65]	MS18274-1	15	2	1218376-2	1218376-7
.043 [1.09]	.176 [4.47]	.040 [1.02]	.432 [10.97]	1.093 [27.76]	.236 [5.99]	.432 [10.97]	.509 [12.93]	.334 [8.48]	1.317 [33.45]	.999 [25.37]	1.556 [39.52]	MS18273-1	9	1	1218376-1	1218376-6
.037 [0.94]	.136 [3.45]	.020 [0.51]	.412 [10.46]	.769 [19.53]	.236 [5.99]	.412 [10.67]	.479 [12.17]	.324 [8.23]	1.307 [33.20]	.989 [25.12]	1.526 [38.76]	MS18273-1	9	1	1218376-1	1218376-6
.043 [1.09]	.176 [4.47]	.049 [1.24]	.544 [13.82]	2.188 [55.58]	.236 [5.99]	.436 [11.07]	.620 [15.75]	.446 [11.33]	2.411 [61.24]	2.084 [52.93]	2.650 [67.31]	MS18277-1	50	5	1218376-5	1218376-0
.037 [0.94]	.136 [3.45]	.029 [0.74]	.324 [8.31]	1.168 [29.67]	.224 [5.69]	.416 [10.67]	.590 [14.96]	.436 [11.07]	2.401 [60.99]	2.074 [52.88]	2.620 [66.55]	MS18276-1	27	4	1218376-4	1218376-9
.043 [1.09]	.176 [4.47]	.049 [1.24]	.432 [10.97]	2.282 [57.96]	.236 [5.99]	.436 [11.07]	.509 [12.93]	.334 [8.48]	2.505 [63.63]	2.187 [55.55]	2.744 [69.70]	MS18276-1	37	4	1218376-4	1218376-8
.037 [0.94]	.136 [3.45]	.029 [0.74]	.412 [10.46]	2.282 [57.96]	.224 [5.69]	.416 [10.67]	.509 [12.93]	.334 [8.48]	2.496 [63.37]	2.177 [55.30]	2.714 [68.94]	MS18275-1	25	3	1218376-3	1218376-8
.043 [1.09]	.176 [4.47]	.049 [1.24]	.432 [10.97]	1.635 [41.53]	.236 [5.99]	.436 [11.07]	.509 [12.93]	.334 [8.48]	1.857 [47.17]	1.539 [39.09]	2.103 [53.42]	MS18274-1	15	2	1218376-2	1218376-7
.037 [0.94]	.136 [3.45]	.029 [0.74]	.412 [10.46]	1.635 [41.53]	.224 [5.69]	.416 [10.67]	.479 [12.17]	.324 [8.23]	1.847 [46.91]	1.529 [38.84]	2.073 [52.65]	MS18274-1	15	2	1218376-2	1218376-7
.043 [1.09]	.176 [4.47]	.040 [1.02]	.432 [10.97]	1.093 [27.76]	.236 [5.99]	.432 [10.97]	.509 [12.93]	.334 [8.48]	1.317 [33.45]	.999 [25.37]	1.556 [39.52]	MS18273-1	9	1	1218376-1	1218376-6
.037 [0.94]	.136 [3.45]	.020 [0.51]	.412 [10.46]	.769 [19.53]	.236 [5.99]	.412 [10.67]	.479 [12.17]	.324 [8.23]	1.307 [33.20]	.989 [25.12]	1.526 [38.76]	MS18273-1	9	1	1218376-1	1218376-6

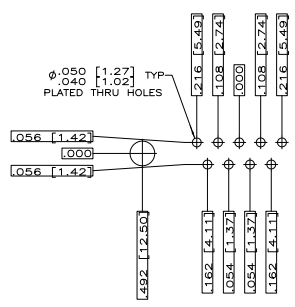
THIS DRAWING IS A CONTROLLED DOCUMENT. THE INFORMATION CONTAINED HEREIN IS UNCLASSIFIED EXCEPT WHERE SHOWN OTHERWISE.

DATE: 01/00/79
 DRAWING NO: 1218376
 REV: 4

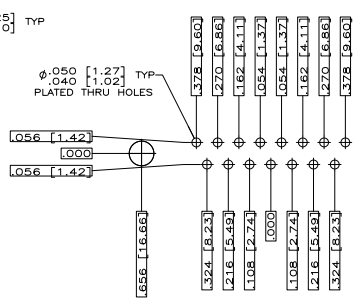
AMPLIMITE PLUG ASSY, LOW PROFILE
 SIZE 20 POSTED PCB BOARD CONTACTS
 SERIES 109

CUSTOMER DRAWING

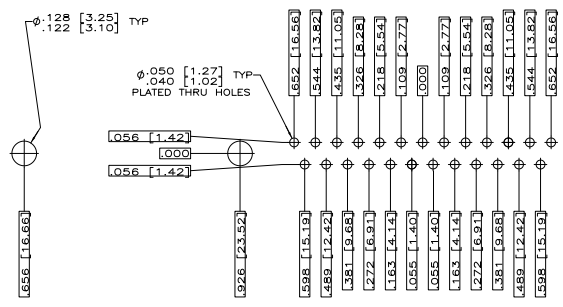
REV	DATE	DESCRIPTION	BY	APP'D
DF	DO	SEE SHEET 1	-	-



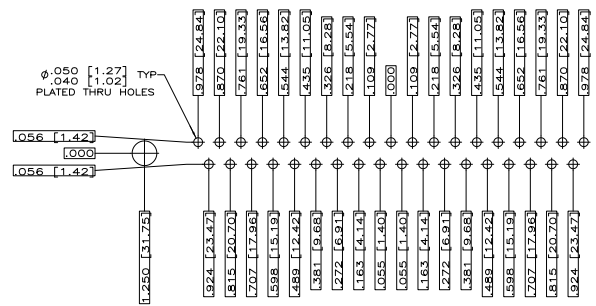
RECOMMENDED P.C. BOARD LAYOUT
SHELL SIZE 1 (9 POSITION)



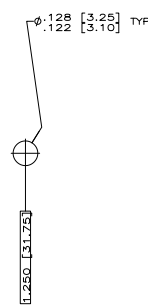
RECOMMENDED P.C. BOARD LAYOUT
SHELL SIZE 2 (15 POSITION)



RECOMMENDED P.C. BOARD LAYOUT
SHELL SIZE 3 (25 POSITION)



RECOMMENDED P.C. BOARD LAYOUT
SHELL SIZE 4 (37 POSITION)



RECOMMENDED P.C. BOARD LAYOUT
SHELL SIZE 5 (50 POSITION)

THIS DRAWING IS A CONTROLLED DOCUMENT.		REV. C. THOMAS 110000		Tyco Electronics		Tyco Electronics Corporation Harrisburg, PA 17105-3608	
DESIGNER	APPROVED	DESIGNED	SECRET	DATE		AMPLITUDE PLUG ASSY, LOW PROFILE SIZE 20 POSTED P.C. BOARD CONTACTS SERIES 109	
WORKS	DRIVER/LEADER	MANUFACTURER	SECRET			SIZE	DATE
SEE CALLOUTS	SEE CALLOUTS	SEE CALLOUTS	SEE CALLOUTS	SEE CALLOUTS	SEE CALLOUTS	A1	00779
							1218376
							REV. 2
							REV. 2
							REV. 2