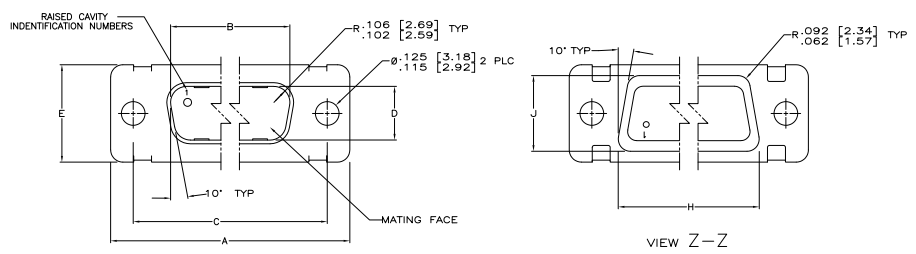
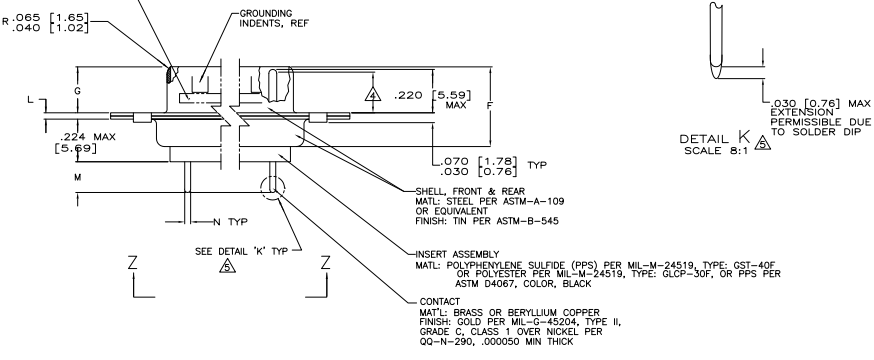


REV	DATE	DESCRIPTION	BY	CHK	APP
1					
2					
3					
4					
5					
6					
7					
8					



- △ SEE SHEET 2 FOR RECOMMENDED P.C. BOARD LAYOUT. TRUE POSITION TOLERANCE FOR P.C. BOARD LAYOUT IS .010 [0.25] AT MAX MATERIAL CONDITION. SUGGESTED BOARD THICKNESS IS .094 [2.39]
- △ THE CONNECTORS DESCRIBED IN THIS DOCUMENT MATE WITH ANY RECEPTACLE CONNECTOR WITH THE SAME INSERT ARRANGEMENT.
- △ MARKED WITH .047 [1.19]-.062 [1.57] HIGH CHARACTERS. FAR SIDE REFERS TO THE WIDE SIDE OF THE KEYSTONE. NEAR SIDE REFERS TO THE NARROW SIDE OF THE KEYSTONE. IF THE FRONT SHELL IS TOO SMALL FOR "TE", TE PART NUMBER AND DATE CODE, THEN SPLIT AS FOLLOWS:
 A. TE PART NUMBER ON REAR SHELL, NEAR SIDE.
 B. "TE" AND DATE CODE ON FRONT SHELL, NEAR SIDE.
- △ REQUIREMENT FOR FULL PIN DIAMETER EXTENSION:
 .159 [4.04] MIN, SHELL SIZES 1 AND 2.
 .150 [3.81] MIN, SHELL SIZES 3 AND 4.
- △ SOLDER DIPPED PER MIL-STD-2000 COMPOSITION Sn63 CONFORMING TO QQ-5-571. COVERAGE SHALL BE COMPLETE TO A DISTANCE .020 [0.51] MAX FROM INSERT ASSEMBLY.
- △ SPACERS (QTY 2) ARE SUPPLIED WITH CONNECTORS (NOT ATTACHED TO THE CONNECTOR).
 7. DIMENSIONS APPLY PRIOR TO SOLDER DIPPING.

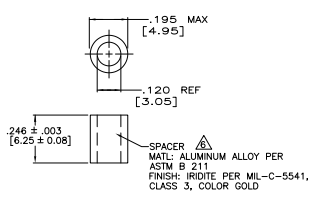
△ MARK TE, TE PART NO AND DATE CODE, FAR SIDE.



SHELL, FRONT & REAR
 MATL: STEEL PER ASTM-A-109 OR EQUIVALENT
 FINISH: TIN PER ASTM-B-545

INSERT ASSEMBLY
 MATL: POLYPHENYLENE SULFIDE (PPS) PER MIL-M-24519, TYPE: GST-40F OR POLYESTER PER MIL-M-24519, TYPE: GLCP-30F, OR PPS PER ASTM D4067, COLOR: BLACK

CONTACT
 MATL: BRASS OR BERYLLIUM COPPER
 FINISH: GOLD PER MIL-G-45204, TYPE II, GRADE C, CLASS 1 OVER NICKEL PER QQ-N-290, .000050 MIN THICK

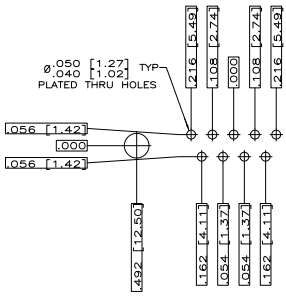


SPACER
 MATL: ALUMINUM ALLOY PER ASTM B 211
 FINISH: IRIDIUM PER MIL-C-5541, CLASS 3, COLOR GOLD

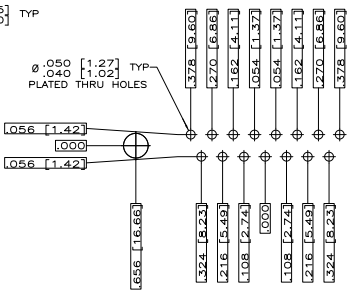
.033 [0.84]	.208 [5.26]	.049 [1.24]	.544 [13.82]	2.188 [55.58]	.236 [5.99]	.436 [11.07]	.620 [15.75]	.446 [11.33]	2.411 [61.24]	2.094 [52.93]	2.650 [67.31]	MS18277-1	50	5	1218375-5	1-1218375-0
.027 [0.69]	.188 [4.77]	.029 [0.74]	.524 [13.31]	2.168 [55.07]	.224 [5.69]	.416 [10.57]	.590 [14.98]	.436 [11.07]	2.401 [60.98]	2.074 [52.88]	2.620 [66.55]	MS18276-1	50	5	1218375-5	1-1218375-0
.033 [0.84]	.208 [5.26]	.049 [1.24]	.432 [10.97]	2.282 [57.96]	.236 [5.99]	.436 [11.07]	.509 [12.93]	.334 [8.48]	2.505 [63.63]	2.187 [55.55]	2.744 [69.70]	MS18275-1	27	4	1218375-4	1218375-9
.027 [0.69]	.188 [4.77]	.029 [0.74]	.412 [10.46]	2.262 [57.45]	.224 [5.69]	.416 [10.57]	.479 [12.17]	.324 [8.23]	2.496 [62.37]	2.177 [55.30]	2.714 [68.94]	MS18275-1	35	3	1218375-3	1218375-8
.027 [0.69]	.188 [4.77]	.049 [1.24]	.432 [10.97]	1.836 [41.53]	.236 [5.99]	.436 [11.07]	.509 [12.93]	.334 [8.48]	1.847 [47.17]	1.539 [39.09]	2.103 [53.42]	MS18274-1	15	2	1218375-2	1218375-7
.027 [0.69]	.188 [4.77]	.029 [0.74]	.412 [10.46]	1.816 [41.02]	.224 [5.69]	.416 [10.57]	.479 [12.17]	.324 [8.23]	1.847 [47.17]	1.529 [38.84]	2.073 [52.65]	MS18274-1	15	2	1218375-2	1218375-6
.033 [0.84]	.208 [5.26]	.040 [1.02]	.432 [10.97]	1.093 [27.76]	.236 [5.99]	.436 [11.07]	.509 [12.93]	.334 [8.48]	1.317 [33.45]	.989 [25.12]	1.556 [39.52]	MS18273-1	9	1	1218375-1	1218375-5
.027 [0.69]	.188 [4.77]	.020 [0.51]	.412 [10.46]	1.073 [27.25]	.229 [5.82]	.412 [10.46]	.479 [12.17]	.324 [8.23]	1.307 [33.20]	.989 [25.12]	1.526 [38.76]	MS18273-1	9	1	1218375-1	1218375-4
.033 [0.84]	.208 [5.26]	.040 [1.02]	.432 [10.97]	.769 [19.53]	.236 [5.99]	.436 [11.07]	.620 [15.75]	.446 [11.33]	2.411 [61.24]	2.094 [52.93]	2.650 [67.31]	MS18277-1	50	5	1218375-5	1218375-5
.027 [0.69]	.188 [4.77]	.029 [0.74]	.524 [13.31]	2.168 [55.07]	.224 [5.69]	.416 [10.57]	.590 [14.98]	.436 [11.07]	2.401 [60.98]	2.074 [52.88]	2.620 [66.55]	MS18277-1	50	5	1218375-5	1218375-5
.033 [0.84]	.208 [5.26]	.049 [1.24]	.432 [10.97]	2.282 [57.96]	.236 [5.99]	.436 [11.07]	.509 [12.93]	.334 [8.48]	2.505 [63.63]	2.187 [55.55]	2.744 [69.70]	MS18276-1	27	4	1218375-4	1218375-4
.027 [0.69]	.188 [4.77]	.029 [0.74]	.412 [10.46]	2.262 [57.45]	.224 [5.69]	.416 [10.57]	.479 [12.17]	.324 [8.23]	2.496 [62.37]	2.177 [55.30]	2.714 [68.94]	MS18276-1	35	3	1218375-3	1218375-4
.033 [0.84]	.208 [5.26]	.049 [1.24]	.432 [10.97]	1.836 [41.53]	.236 [5.99]	.436 [11.07]	.509 [12.93]	.334 [8.48]	1.847 [47.17]	1.539 [39.09]	2.103 [53.42]	MS18275-1	25	3	1218375-3	1218375-3
.027 [0.69]	.188 [4.77]	.029 [0.74]	.412 [10.46]	1.816 [41.02]	.224 [5.69]	.416 [10.57]	.479 [12.17]	.324 [8.23]	1.847 [47.17]	1.529 [38.84]	2.073 [52.65]	MS18275-1	25	3	1218375-3	1218375-3
.033 [0.84]	.208 [5.26]	.040 [1.02]	.432 [10.97]	1.093 [27.76]	.236 [5.99]	.436 [11.07]	.509 [12.93]	.334 [8.48]	1.317 [33.45]	.989 [25.12]	1.556 [39.52]	MS18274-1	15	2	1218375-2	1218375-2
.027 [0.69]	.188 [4.77]	.020 [0.51]	.412 [10.46]	1.073 [27.25]	.229 [5.82]	.412 [10.46]	.479 [12.17]	.324 [8.23]	1.307 [33.20]	.989 [25.12]	1.526 [38.76]	MS18274-1	15	2	1218375-2	1218375-2
.033 [0.84]	.208 [5.26]	.040 [1.02]	.432 [10.97]	.769 [19.53]	.236 [5.99]	.436 [11.07]	.620 [15.75]	.446 [11.33]	2.411 [61.24]	2.094 [52.93]	2.650 [67.31]	MS18273-1	9	1	1218375-1	1218375-1
.027 [0.69]	.188 [4.77]	.020 [0.51]	.412 [10.46]	.749 [19.02]	.229 [5.82]	.412 [10.46]	.479 [12.17]	.324 [8.23]	2.379 [60.43]	.989 [25.12]	1.526 [38.76]	MS18273-1	9	1	1218375-1	1218375-1

N M L J H G F E D C B A

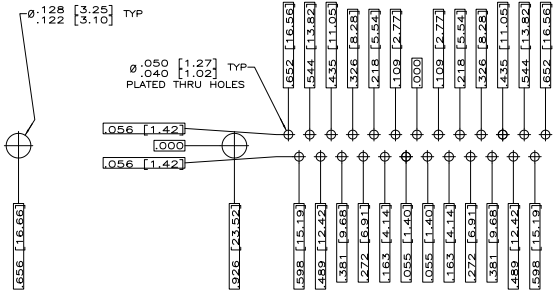
THIS DRAWING IS A CONTROLLED DOCUMENT.		REV. CONTROL	ISSUED	DATE	This Electronics Corporation Harrisburg, PA 17105-2608	
DESCRIPTION	REVISEMENTS	DATE	BY	DATE	BY	DATE
AMPLUMITE PLUG ASSY, LOW PROFILE SIZE 20 POSTED CONTACTS SERIES 100						
SIZE	DATE	ISSUED BY	DATE	BY	DATE	BY
A1	00779	G	1218375			
CUSTOMER DRAWING						



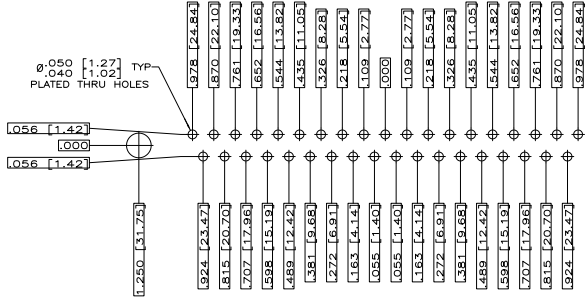
RECOMMENDED P.C. BOARD LAYOUT
SHELL SIZE 1 (9 POSITION)



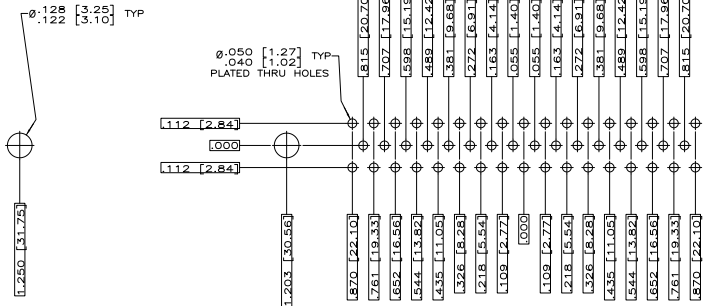
RECOMMENDED P.C. BOARD LAYOUT
SHELL SIZE 2 (15 POSITION)



RECOMMENDED P.C. BOARD LAYOUT
SHELL SIZE 3 (25 POSITION)



RECOMMENDED P.C. BOARD LAYOUT
SHELL SIZE 4 (37 POSITION)



RECOMMENDED P.C. BOARD LAYOUT
SHELL SIZE 5 (50 POSITION)

THIS DRAWING IS A CONTROLLED DOCUMENT.		TYS ELECTRONICS CORPORATION	
DESIGNER	APPROVED	DATE	REV
WORKS	DESIGNER	DATE	REV
PROJECT	PROJECT	DATE	REV
DATE	DATE	DATE	DATE
SEE CALLOUTS	SEE CALLOUTS	SEE CALLOUTS	SEE CALLOUTS
CUSTOMER DRAWING		SIZE	REV
A1		4:1	2