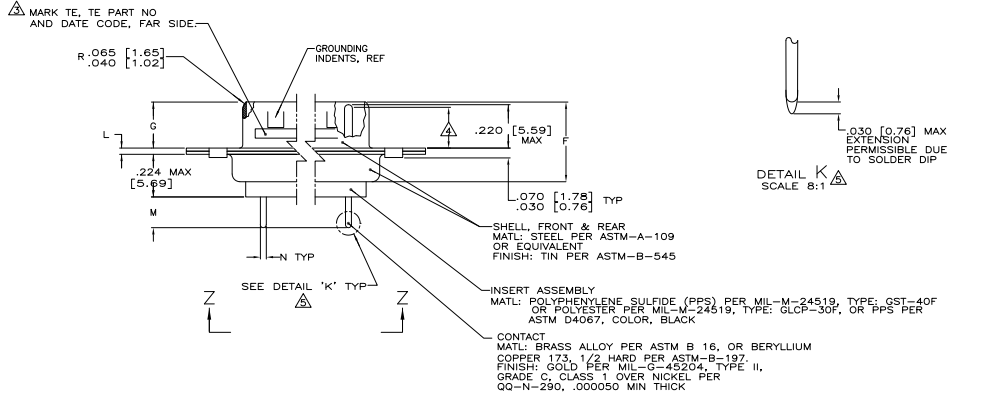
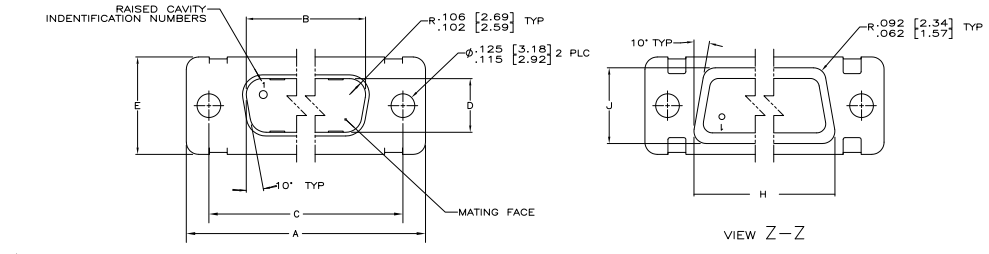
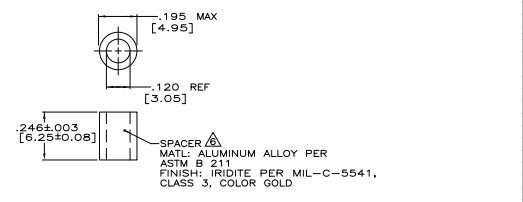


REV	DATE	DESCRIPTION	BY	CHK	APP
1					
2					
3					
4					
5					
6					
7					
8					



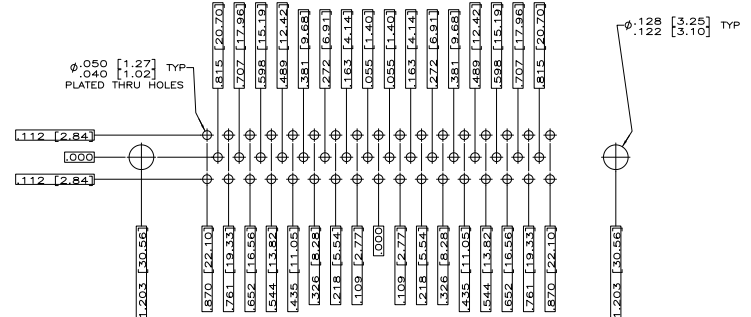
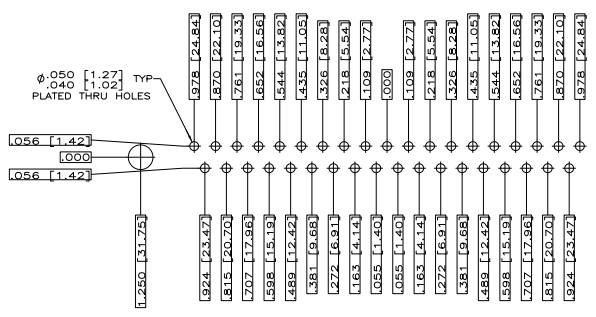
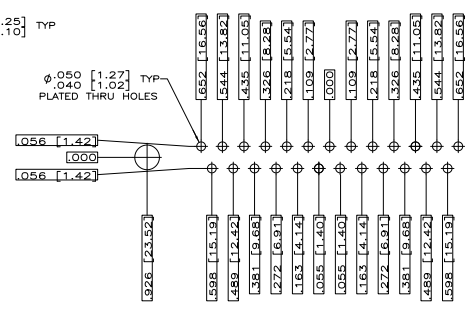
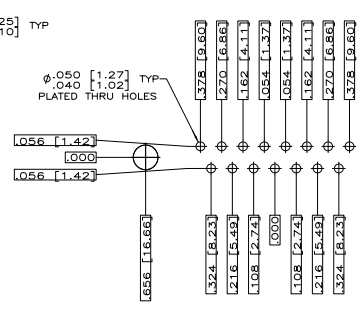
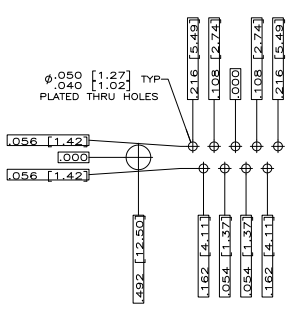
- △ SEE SHEET 2 FOR RECOMMENDED P.C. BOARD LAYOUT. TRUE POSITION TOLERANCE FOR P.C. BOARD LAYOUT IS .010 [0.25] AT MAX MATERIAL CONDITION. SUGGESTED BOARD THICKNESS IS .094 [2.39]
- △ THE CONNECTORS DESCRIBED IN THIS DOCUMENT MATE WITH ANY RECEPTACLE CONNECTOR WITH THE SAME INSERT ARRANGEMENT.
- △ MARKED WITH .047 [1.19]-.062 [1.57] HIGH CHARACTERS. FAR SIDE REFERS TO THE WIDE SIDE OF THE KEYSTONE. NEAR SIDE REFERS TO THE NARROW SIDE OF THE KEYSTONE. IF THE FRONT SHELL IS TOO SMALL FOR "TE", TE PART NUMBER AND DATE CODE, THEN SPLIT AS FOLLOWS:  
 A. TE PART NUMBER ON REAR SHELL, NEAR SIDE.  
 B. "TE" AND DATE CODE ON FRONT SHELL, NEAR SIDE.
- △ REQUIREMENT FOR FULL PIN DIAMETER EXTENSION:  
 .159 [4.04] MIN, SHELL SIZES 1 AND 2.  
 .150 [3.81] MIN, SHELL SIZES 3 AND 4.
- △ SOLDER DIPPED PER MIL-STD-2000 COMPOSITION Sn63 CONFORMING TO QQ-5-571. COVERAGE SHALL BE COMPLETE TO A DISTANCE .020 [0.51] MAX FROM INSERT ASSEMBLY.
- △ SPACERS (QTY 2) ARE SUPPLIED WITH CONNECTORS (NOT ATTACHED TO THE CONNECTOR).
- 7. DIMENSIONS APPLY PRIOR TO SOLDER DIPPING.



	N	M	L	J	H	G	F	E	D	C	B	A	NO OF INSERT ARRANGEMENT POS	SHELL SIZE	TE PN ON CONNECTOR	PART NUMBER
.033 [0.84]	.176 [4.47]	.049 [1.24]	.544 [13.82]	2.188 [55.58]	.236 [5.99]	.436 [11.07]	.620 [15.75]	.446 [11.33]	2.411 [61.24]	2.094 [52.93]	2.650 [67.31]	MS18277-1	50	5	1218374-5	1-1218374-0
.027 [0.69]	.136 [3.45]	.029 [0.74]	.424 [10.77]	1.688 [43.01]	.224 [5.69]	.416 [10.57]	.590 [14.98]	.436 [11.07]	2.401 [60.99]	2.074 [52.88]	2.620 [66.55]	MS18276-1	25	4	1218374-4	1218374-9△
.033 [0.84]	.176 [4.47]	.049 [1.24]	.432 [10.97]	2.282 [57.96]	.236 [5.99]	.436 [11.07]	.509 [12.93]	.334 [8.48]	2.505 [63.63]	2.187 [55.55]	2.744 [69.70]	MS18276-1	37	3	1218374-4	1218374-8△
.027 [0.69]	.136 [3.45]	.029 [0.74]	.412 [10.46]	1.815 [46.02]	.224 [5.69]	.416 [10.57]	.479 [12.17]	.324 [8.23]	2.495 [62.37]	2.177 [55.30]	2.714 [68.94]	MS18275-1	25	3	1218374-3	1218374-6△
.027 [0.69]	.136 [3.45]	.029 [0.74]	.412 [10.46]	1.815 [46.02]	.224 [5.69]	.416 [10.57]	.479 [12.17]	.324 [8.23]	2.495 [62.37]	2.177 [55.30]	2.714 [68.94]	MS18274-1	15	2	1218374-2	1218374-7△
.033 [0.84]	.176 [4.47]	.049 [1.24]	.432 [10.97]	2.282 [57.96]	.236 [5.99]	.436 [11.07]	.509 [12.93]	.334 [8.48]	2.505 [63.63]	2.187 [55.55]	2.744 [69.70]	MS18273-1	9	1	1218374-1	1218374-6△
.027 [0.69]	.136 [3.45]	.029 [0.74]	.412 [10.46]	1.815 [46.02]	.224 [5.69]	.416 [10.57]	.479 [12.17]	.324 [8.23]	2.495 [62.37]	2.177 [55.30]	2.714 [68.94]	MS18277-1	50	5	1218374-5	1218374-5
.033 [0.84]	.176 [4.47]	.049 [1.24]	.432 [10.97]	2.282 [57.96]	.236 [5.99]	.436 [11.07]	.509 [12.93]	.334 [8.48]	2.505 [63.63]	2.187 [55.55]	2.744 [69.70]	MS18276-1	37	3	1218374-4	1218374-4
.027 [0.69]	.136 [3.45]	.029 [0.74]	.412 [10.46]	1.815 [46.02]	.224 [5.69]	.416 [10.57]	.479 [12.17]	.324 [8.23]	2.495 [62.37]	2.177 [55.30]	2.714 [68.94]	MS18275-1	25	3	1218374-3	1218374-3
.027 [0.69]	.136 [3.45]	.029 [0.74]	.412 [10.46]	1.815 [46.02]	.224 [5.69]	.416 [10.57]	.479 [12.17]	.324 [8.23]	2.495 [62.37]	2.177 [55.30]	2.714 [68.94]	MS18274-1	15	2	1218374-2	1218374-2
.033 [0.84]	.176 [4.47]	.049 [1.24]	.432 [10.97]	2.282 [57.96]	.236 [5.99]	.436 [11.07]	.509 [12.93]	.334 [8.48]	2.505 [63.63]	2.187 [55.55]	2.744 [69.70]	MS18273-1	9	1	1218374-1	1218374-1

THIS DRAWING IS A CONTROLLED DOCUMENT. IT IS THE PROPERTY OF 3M ELECTRONICS CORPORATION. IT IS TO BE KEPT IN CONFIDENCE AND NOT TO BE REPRODUCED OR TRANSMITTED IN ANY FORM OR BY ANY MEANS, ELECTRONIC OR MECHANICAL, INCLUDING PHOTOCOPYING, RECORDING, OR BY ANY INFORMATION STORAGE AND RETRIEVAL SYSTEM, WITHOUT THE WRITTEN PERMISSION OF 3M ELECTRONICS CORPORATION.

DATE: 01/07/79  
 DRAWING NO: G-1218374  
 CUSTOMER DRAWING



THIS DRAWING IS A CONTROLLED DOCUMENT.		THE P.C. BOARD IS THE PROPERTY OF THE CUSTOMER. IT IS TO BE USED ONLY FOR THE PURPOSES SPECIFIED IN THE ORDER. IT IS NOT TO BE REPRODUCED OR COPIED IN ANY MANNER WITHOUT THE WRITTEN PERMISSION OF THE CUSTOMER.	
DRAWING NO. 100779 REV. 1 DATE 12/18/87	CUSTOMER DRAWING SEE CALLOUTS	AMPULITE PLUG ASSY, LOW PROFILE SIZE 20 POSTED CONTACTS .030 DIA SHORT POST, SERIES 100	DRAWING NO. 100779 REV. 1 DATE 12/18/87