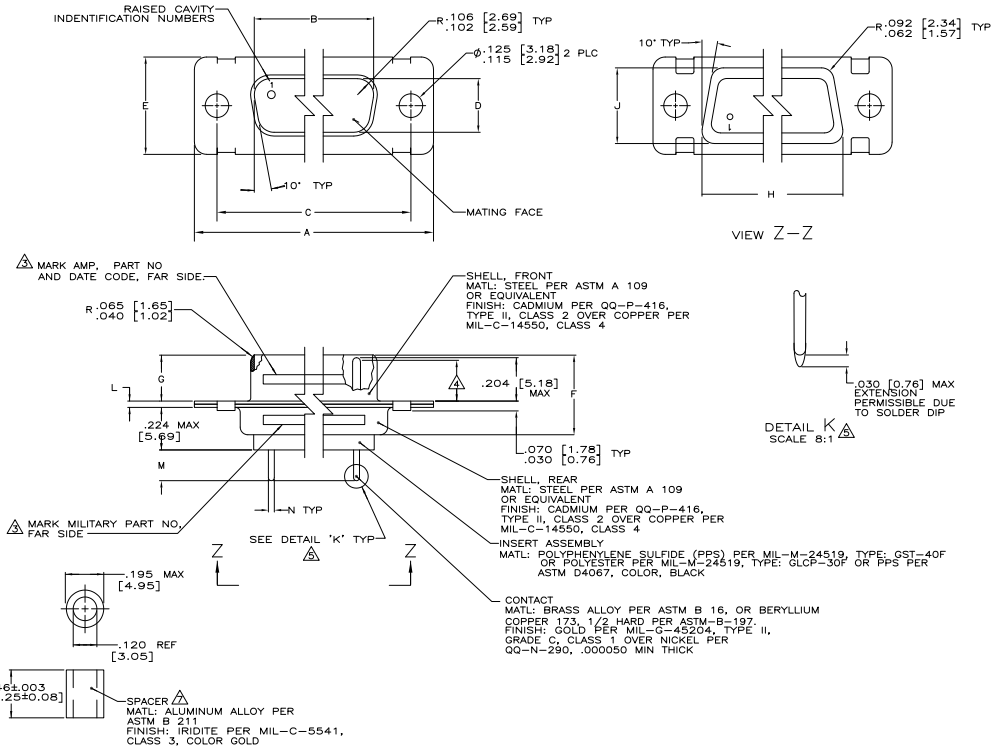


REV	DATE	DESCRIPTION	BY	CHK	APP
1					
2		REVISED PER EDD-11-00530			



- △ SEE SHEET 2 FOR RECOMMENDED P.C. BOARD LAYOUT. TRUE POSITION TOLERANCE FOR P.C. BOARD LAYOUT IS .010 [0.25] AT MAX MATERIAL CONDITION. SUGGESTED BOARD THICKNESS IS .094 [2.39]
- △ THE CONNECTORS DESCRIBED IN THIS DOCUMENT MEET THE REQUIREMENTS OF MIL-C-24308 AND MATE WITH ANY RECEPTACLE CONNECTOR WITH SAME INSERT ARRANGEMENT.
- △ MARK WITH .047 [1.19]-.062 [1.57] HIGH CHARACTERS. FAR SIDE REFERS TO THE WIDE SIDE OF THE KEYSTONE. NEAR SIDE REFERS TO THE NARROW SIDE OF THE KEYSTONE. IF THE REAR SHELL IS TOO SMALL FOR THE ENTIRE MILITARY PART NUMBER, MARKING SHALL BE LOCATED AS FOLLOWS:
  - A. "M24308" ON FRONT SHELL, FAR SIDE.
  - B. SLASH SHEET AND DASH NUMBER ON REAR SHELL, FAR SIDE.
  - C. "AMP" AND DATE CODE ON FRONT SHELL, NEAR SIDE.
  - D. PART NUMBER ON REAR SHELL, NEAR SIDE.
- IF THE FRONT SHELL IS TOO SMALL FOR "AMP", PART NUMBER AND DATE CODE, THEN SPLIT AS FOLLOWS:
  - A. PART NUMBER ON REAR SHELL, NEAR SIDE.
  - B. "AMP" AND DATE CODE ON FRONT SHELL, NEAR SIDE.
  - C. MILITARY PART NUMBER ON REAR SHELL, FAR SIDE.
- △ REQUIREMENT FOR FULL PIN DIAMETER EXTENSION: .159 [4.04] MIN, SHELL SIZES 1 AND 2. .150 [3.81] MIN, SHELL SIZES 3, 4, AND 5.
- △ SOLDER DIP PER MIL-STD-2000 COMPOSITION Sn63 CONFORMING TO QQ-S-571. COVERAGE SHALL BE COMPLETE TO A DISTANCE .020 [0.51] MAX FROM INSERT ASSEMBLY.
- 6. THE SOLDER DIP PROCESS IS PERFORMED SUBSEQUENT TO THE COMPLETION OF PRODUCTION OF THE MILITARY QUALIFIED CONNECTOR. DIMENSIONS APPLY PRIOR TO SOLDER DIPPING.
- △ SPACERS (QTY 2) ARE SUPPLIED WITH CONNECTORS (NOT ATTACHED TO THE CONNECTOR).
- 8. DIMENSIONS AND TOLERANCES PER ANSI Y14.5M-1982.
- 9. THIS DRAWING SHALL BE INTERPRETED IN ACCORDANCE WITH APPLICABLE STANDARDS LISTED IN MIL-STD-100.

N	M	L	J	H	G	F	E	D	C	B	A	INSERT ARRANGEMENT	NO OF SHELL POS	MILITARY P/N ON CONNECTOR	P/N ON CONNECTOR	PART NUMBER	
												MS18277-1	50	5	M24308/24-5F	1218124-5	1-1218124-0
												MS18276-1	37	4	M24308/24-4F	1218124-4	1218124-0
												MS18275-1	25	3	M24308/24-3F	1218124-3	1218124-0
												MS18274-1	15	2	M24308/24-2F	1218124-2	1218124-0
												MS18273-1	9	1	M24308/24-1F	1218124-1	1218124-0
												MS18277-1	50	5	M24308/24-5F	1218124-5	1218124-0
												MS18276-1	37	4	M24308/24-4F	1218124-4	1218124-0
												MS18275-1	25	3	M24308/24-3F	1218124-3	1218124-0
												MS18274-1	15	2	M24308/24-2F	1218124-2	1218124-0
												MS18273-1	9	1	M24308/24-1F	1218124-1	1218124-0

THIS DRAWING IS A CONTROLLED DOCUMENT

REVISIONS: 1. 03/20/00

DATE: 03/20/00

BY: 111M111 RK HMR

DESCRIPTION: AMPHIMITE PLUG ASSY, LOW PROFILE SIZE 20 POSTED, .030 DIA SHORT POST SERIES 100, SHELL SIZES 1 THRU 5

REV: 1

DATE: 03/20/00

BY: 111M111 RK HMR

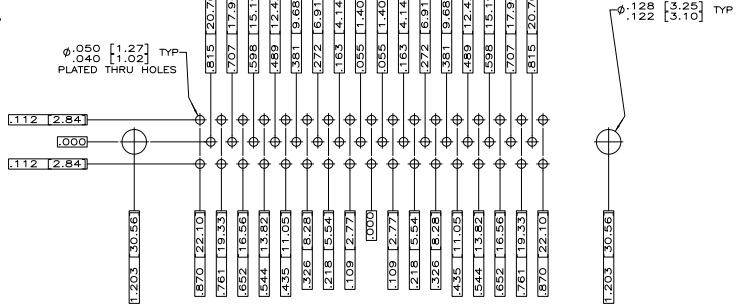
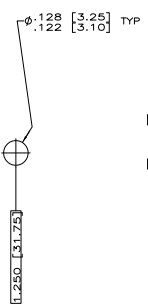
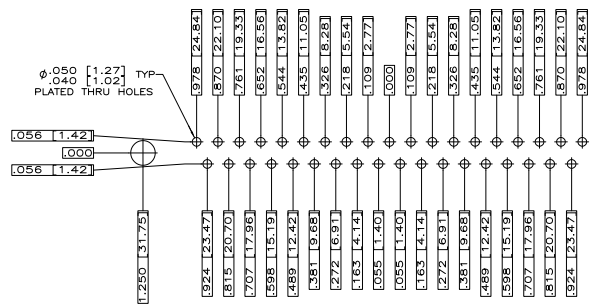
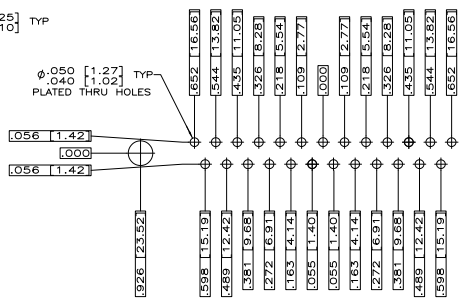
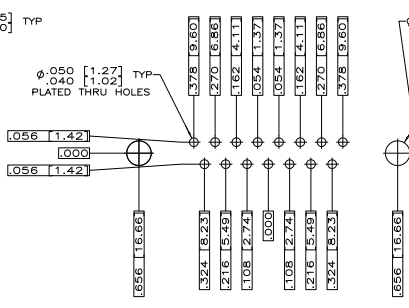
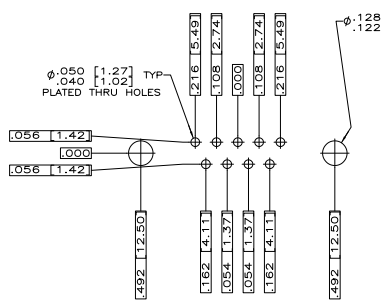
DESCRIPTION: AMPHIMITE PLUG ASSY, LOW PROFILE SIZE 20 POSTED, .030 DIA SHORT POST SERIES 100, SHELL SIZES 1 THRU 5

REV: 1

DATE: 03/20/00

BY: 111M111 RK HMR

REV	DATE	DESCRIPTION	BY	APP'D
DF	DO	SEE SHEET 1	-	-



THIS DRAWING IS A CONTROLLED DOCUMENT.		DESIGNED BY	INSP. BY	DATE
DRAWN BY		CHECKED BY	APPROVED BY	
DATE		TE Connectivity		
AMPULMITE PLUG ASSY, LOW PROFILE				
SIZE 20 POSTED P.C. BOARD CONTACTS,				
0.30 DIA SHORT POST, SERIES 100.				
SIZE	DATE	DRAWING NO.	REVISED TO	
A1	000779	1218124		
CUSTOMER DRAWING		SIZE	SHEET	OF
		4.1	2	2