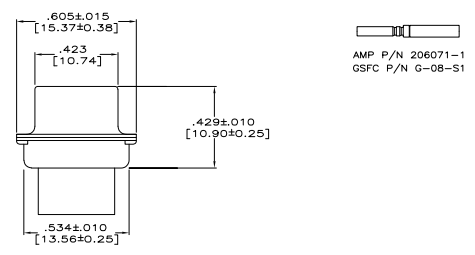
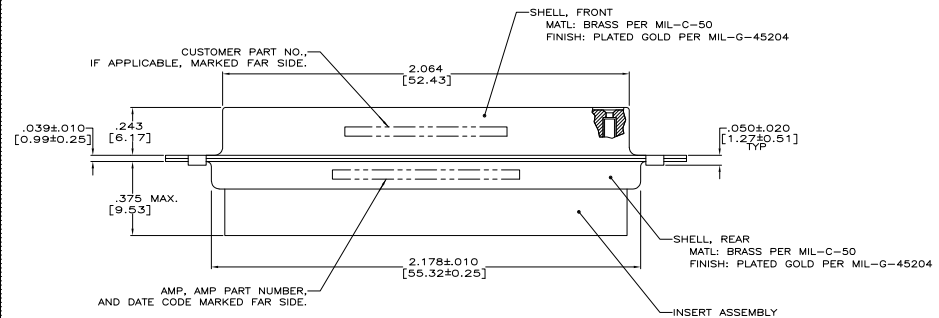


- THIS RECEPTACLE WILL MATE WITH ANY PLUG CONNECTOR WITH THE SAME INSERT ARRANGEMENT AS DEFINED BY MS18277-2.
  - MAXIMUM WIRE INSULATION USED WITH THIS RCPT. IS .054 [1.37] DIA.
  - Be-Cu RETENTION CLIPS ARE INCLUDED IN INSERTS.
- ⚠ INSPECTION REQUIREMENTS PER R4383.
  - ⚠ CONNECTOR SUPPLIED WITH 86 CONTACTS, AMP PART NUMBER 206071-1. INSPECTION REQUIREMENTS PER R4383 WITHOUT TESTS FOR HIGH ALTITUDE DIELECTRIC WITHSTANDING VOLTAGE AS CALLED FOR IN TABLE II SCREENING AND TESTING.
  - ⚠ UL/CSA DESIGNATION STAMPED IN THIS AREA, OPTIONAL.
  - ⚠ SPECIAL TESTING PER GE DOCUMENT 20025720. CONNECTOR SUPPLIED WITH 88 CONTACTS, AMP P/N 206071-1.
  - ⚠ RESTRICTED TO CAE ELECTRONICS ONLY.
  - ⚠ THESE CONNECTORS ARE QUALIFIED TO GODDARD SPACE FLIGHT CENTER SPECIFICATION S-311-P-4.
  - ⚠ CONNECTOR SUPPLIED WITH 78 CONTACTS, AMP PART NUMBER 206071-1; (NDT INSTALLED).
  - ⚠ SINGLE LOT DATE CODE AND 100% GROUP "A" ACCEPTANCE TESTING PER CI-2A-019.



AMP P/N 206071-1  
 GSFC P/N G-08-S1

INSERT ASSEMBLY  
 MATL: DIALYL PHTHALATE, TYPE SDG-F  
 PER MIL-M-14,  
 COLOR: BLUE  
 OR POLYPHENYLENE SULFIDE (PPS)  
 PER MIL-M-24519, TYPE GST-40F  
 COLOR: BLACK

⚠	120 (3.05)	CI-2A-019-004V-001	1-206505-4	1-206505-4
⚠	120 (3.05)	S70566-5	1-206505-3	1-206505-3
⚠	120 (3.05)	LMSC 1621480-006	1-206505-2	1-206505-2
⚠	120 (3.05)	LMSC 1621480-006	1-206505-1	1-206505-1
⚠	120 (3.05)	311P407-SS-B-12	206505-4	1-206505-0
⚠	120 (3.05)	210025720R1078S	206505-9	206505-9
⚠	120 (3.05)	R4383P78S	206505-8	206505-8
⚠	154 (3.91)		206505-7	206505-7
⚠	120 (3.05)	R4383P78S-2	206505-6	206505-6
⚠	120 (3.05)	SC31D139-045	206505-5	206505-5
⚠	120 (3.05)	311P407-SS-B-12	206505-4	206505-4
⚠	154 (3.91)		206505-3	206505-3
⚠	120 (3.05)	R3259P78S	206505-2	206505-2
⚠	154 (3.91)	311P407-SS-B-15	206505-1	206505-1

REMARKS	DIA A	CUSTOMER P/N	AMP P/N	AMP P/N
		DN CONNECTOR	DN CONNECTOR	AMP P/N

THIS DRAWING IS A CONTROLLED DOCUMENT. DATE: 12-18-88

BY: CLOUSER 1-21-88  
 BY: GANDLIN 1-21-88

REVISIONS: 1-21-88

DESIGNED BY: F. JENSENY  
 CHECKED BY: J. JENSENY  
 DRAWN BY: J. JENSENY

OPERATION SPEC: ---  
 MATERIAL SPEC: ---  
 FINISH SPEC: ---

SEE CALLOUTS

DATE CODE: A1  
 DATE CODE: 00779  
 DRAWING NO: G=206505

REVISIONS: 1 1 W

CUSTOMER DRAWING

**AMP** Tyco Electronics Corporation  
 Harrisburg, PA 17102-3608

AMPLUMITE NONMAGNETIC RECEPTACLE ASSEMBLY,  
 SERIES 90, SHELL SIZE 5, 78 POSITION