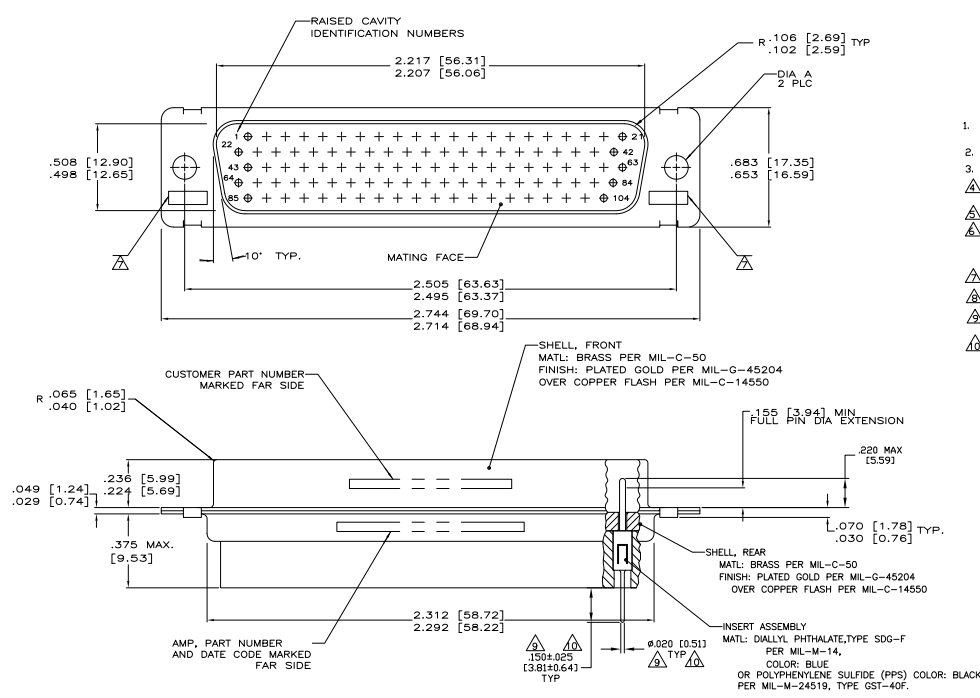
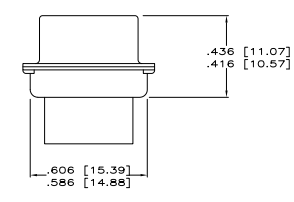


REV	DATE	DESCRIPTION	BY	APP
1				
2		REVISED PER EDD-11-008108		



- THIS PLUG WILL MATE WITH ANY RECEPTACLE CONNECTOR WITH THE SAME INSERT ARRANGEMENT AS DEFINED BY MS14004-1.
 - MAXIMUM WIRE INSULATION USED WITH THIS PLUG IS .054 DIA.
 - Be-Cu RETENTION CLIPS ARE INCLUDED IN INSERTS.
- ⚠ THESE CONNECTORS ARE QUALIFIED TO GODDARD SPACE FLIGHT CENTER SPECIFICATION S-31-P-4.
 - ⚠ INSPECTION REQUIREMENTS PER R4383.
 - ⚠ CONNECTOR SUPPLIED WITH 115 CONTACTS, PART NUMBER 204370-8. INSPECTION REQUIREMENTS PER R4383 WITHOUT TESTS FOR HIGH ALTITUDE DIELECTRIC WITHSTANDING VOLTAGE AS CALLED FOR IN TABLE II SCREENING AND TESTING.
 - ⚠ UL/CSA DESIGNATION STAMPED IN THIS AREA, OPTIONAL.
 - ⚠ RESTRICTED TO CAE ELECTRONICS ONLY.
 - ⚠ CONNECTOR LOADED WITH POSTED CONTACTS, INSPECTION REQUIREMENTS PER GENERAL ELECTRIC DOCUMENT 20025720
 - ⚠ CONNECTOR LOADED WITH POSTED CONTACTS, INSPECTION REQUIREMENTS PER LOCKHEED MARTIN DOCUMENT 20131204.



NUMBER 204370-8
 CSFC PART NUMBER G-08-P1
 (SUPPLIED WITH 206066-7
 AND 1-206066-0 ONLY)

⚠	.120 [3.05]	20131204P2104P	1-206066-5	1-206066-5
⚠	.120 [3.05]	570566-12	1-206066-4	1-206066-4
⚠	.120 [3.05]	20025720P2104P	1-206066-0	1-206066-2
⚠	.120 [3.05]	311P407-6P-B-12	206066-4	1-206066-1
⚠	.120 [3.05]	20025720P1104P	1-206066-0	1-206066-0
⚠	.120 [3.05]	1822251-001	206066-9	206066-9
⚠	.120 [3.05]	7636-11	206066-8	206066-8
⚠	.120 [3.05]	R4383P104P	206066-7	206066-7
⚠	.120 [3.05]	R4383P104P-2	206066-6	206066-6
⚠	.120 [3.05]	SC810139-056	206066-5	206066-5
⚠	.120 [3.05]	311P407-6P-B-12	206066-4	206066-4
⚠	.154 [3.911]	-	206066-3	206066-3
⚠	.154 [3.911]	311P407-6P-B-15	206066-2	206066-2
⚠	.120 [3.05]	R9259P104P	206066-1	206066-1

REMARKS	DIA A	MARKED	CUSTOMER P/N	P/N	PART NUMBER

THIS DRAWING IS A CONTROLLED DOCUMENT. DATE: 11-30-08

TE Connectivity

PLUG, PIN CONTACTS
 HI-DENSITY HDD SERIES
 HI-DENSITY HDD SERIES

DATE: 11-30-08
 DRAWING NO: A100779
 REV: 2
 SHEET: 41
 TOTAL SHEETS: 1