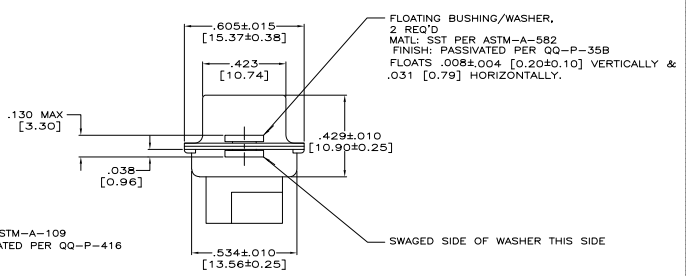
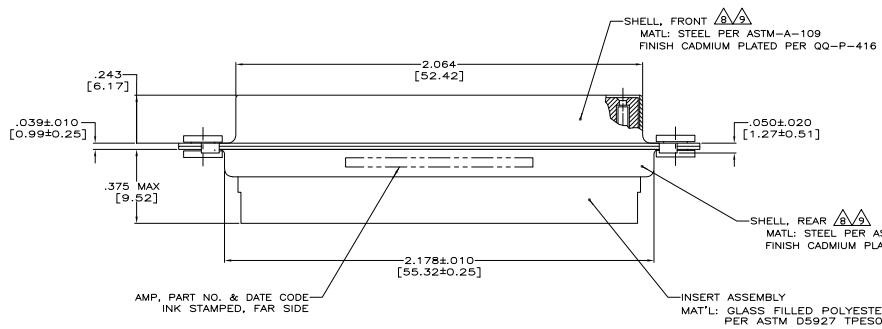
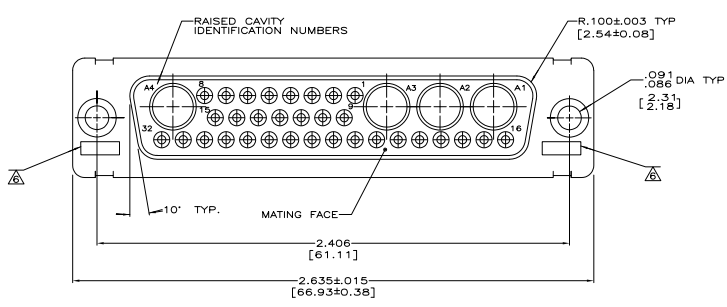


THIS DRAWING IS UNPUBLISHED. REPRODUCED FOR INFORMATION ONLY. ALL RIGHTS RESERVED.

REV	DATE	DESCRIPTION	BY	CHK	APP
DF	DO				
C		REV PER ECU 05-1885			



1. THIS RECEPTACLE WILL MATE WITH ANY 36C4, SIZE 5 PLUG IN AMPLIMITE SERIES.
  2. MAXIMUM WIRE INSULATION TO BE USED WITH THIS RECEPTACLE IS .068 DIA [1.73].
  3. STAINLESS STEEL RETENTION CLIPS ARE INCLUDED IN INSERT ASSEMBLY.
  4. CONNECTOR SUPPLIED WITHOUT CONTACTS; SHOWN FOR ILLUSTRATION ONLY.
  5. THIS CONNECTOR ACCEPTS SIZE 20 SOCKET CONTACTS.
  6. UL/CSA DESIGNATION STAMPED IN THIS AREA, OPTIONAL.
  7. DIMENSIONS IN BRACKETS ARE IN MILLIMETERS, METRIC EQUIVALENTS ARE BASED UPON 1.00 INCH = 25.4 mm.
- ▲ FINISH: CADMIUM PER QQ-P-416.  
 ▲ FINISH: ZINC PLATE PER ASTM-B-633 .000200-.000400 THK WITH SUPPLEMENTARY CHROMATE (Cr3+).

5-446711-1
446711-1
NOTES
PART NUMBER

THIS DRAWING IS A CONTROLLED DOCUMENT.

DESIGNER	DATE	REV	REV	REV	REV

CUSTOMER DRAWING: A1 00779 (S=446711) DATE: 4-1 SHEET: 1 OF 1

