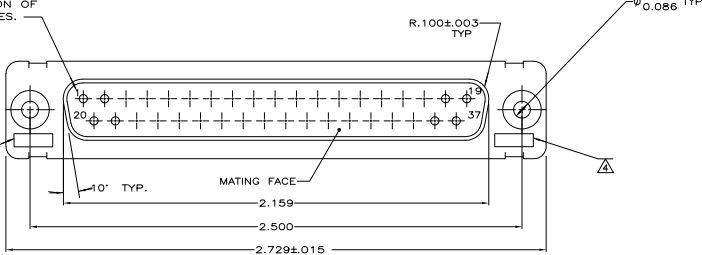


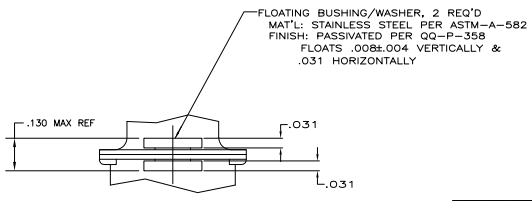
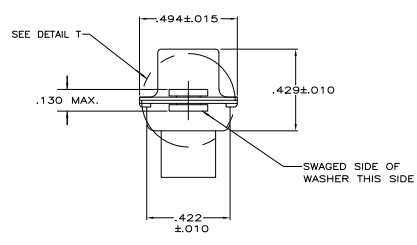
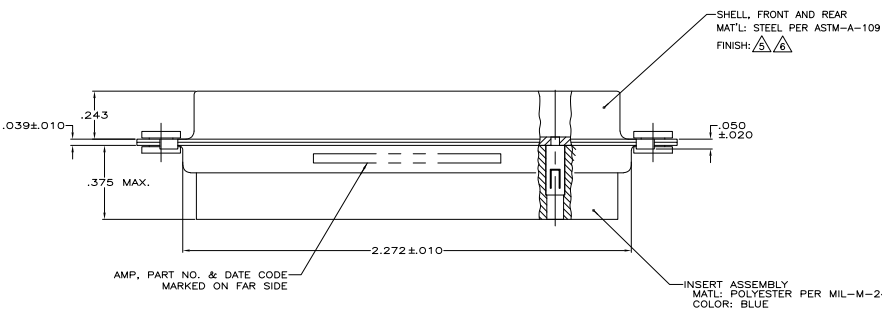
THIS DRAWING IS UNPUBLISHED. REPRODUCED FOR PUBLICATION BY THE ELECTRONICS CORPORATION. ALL RIGHTS RESERVED.

REVISONS		DATE	BY	APP
DF	DO	08299704		
A		REV PER ECO-35-014959	10FEB04	PY DM

RAISED NUMBERS FOR IDENTIFICATION OF CIRCUIT HOLES.



1. MAXIMUM WIRE INSULATION TO BE USED WITH THIS PLUG IS .068 DIA.
 2. STAINLESS STEEL RETENTION CLIPS ARE INCLUDED IN INSERTS.
 3. THIS PLUG WILL ACCEPT SIZE 20 PIN CONTACT M39029/64-369 OR AMP PART NUMBER 205089-1.
- ▲ UL/CSA DESIGNATION MARKED IN THIS AREA, OPTIONAL
 ▲ FINISH: CADMIUM PER QQ-P-416
 ▲ FINISH: ZINC PLATED PER ASTM-B-633, .000200-.000400 THK WITH SUPPLEMENTARY CHROMATE (Cr3+)



DESCRIPTION	PART NUMBER
PLATED PER ▲	5-1484949-1
PLATED PER ▲	1484949-1

THIS DRAWING IS A CONTROLLED DOCUMENT.		REV. 1	DATE 08/29/97	BY DM	APP PY
DESIGNED BY	ENGINEER	DATE	REVISED BY	DATE	REVISED BY
DRG NO. 100779	REV. 1	08/29/97			
CUSTOMER DRAWING		TABLE 4:1	SHEET 1	OF 1	REV A