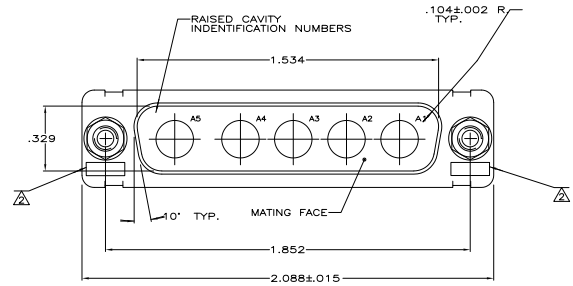
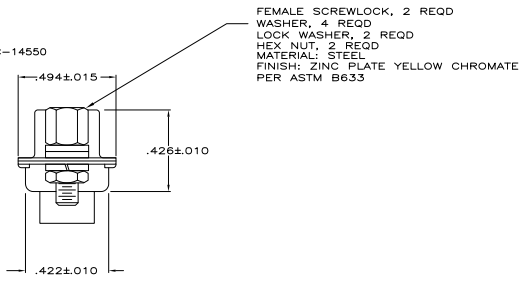
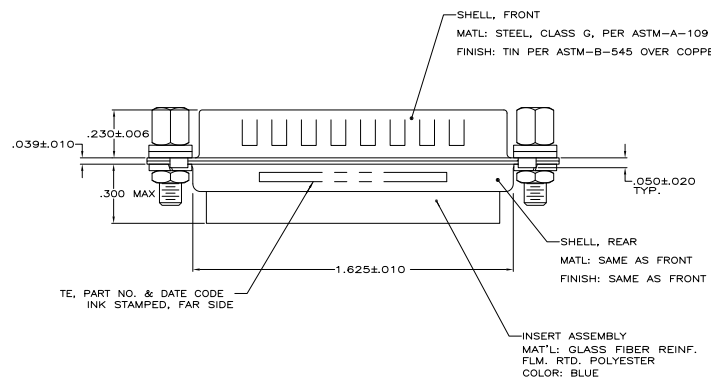


REV	DATE	DESCRIPTION	BY	CHK	APP
DF	DO				
B		REVISED FOR ECO-08-012641			04-01-08 CT RL



1. THIS PLUG WILL MATE WITH ANY SC5, SIZE 3 RECEPTACLE IN AMPLIMITE SERIES
2. UL/CSA DESIGNATION STAMPED IN THIS AREA, OPTIONAL.
3. THIS KIT SUPPLIED WITH 4 CONTACTS (NOT INSTALLED), TE P/N 211161-1, WHICH IS DESIGNED FOR 8 AWG WIRE.
4. FOR CONTACT CRIMPING INSTRUCTIONS REFER TO TE IS 7516.
5. CONTACT REMOVAL TOOL: TE P/N 58095-1



TE, PART NO. & DATE CODE  
 INK STAMPED, FAR SIDE

INSERT ASSEMBLY  
 MAT'L: GLASS FIBER REINF.  
 FILM, RTD. POLYESTER  
 COLOR: BLUE

AS SHOWN	449562-1
MATERIAL	PART NO.

THIS DRAWING IS A CONTROLLED DOCUMENT.		REVISED FOR ECO-08-012641	DATE	04-01-08
DESIGNER	APPROVED	DATE	04-01-08	BY
DATE	04-01-08	BY	CT	RL
CUSTOMER DRAWING		DATE	04-01-08	BY