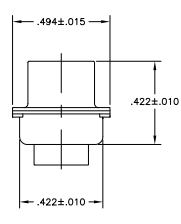
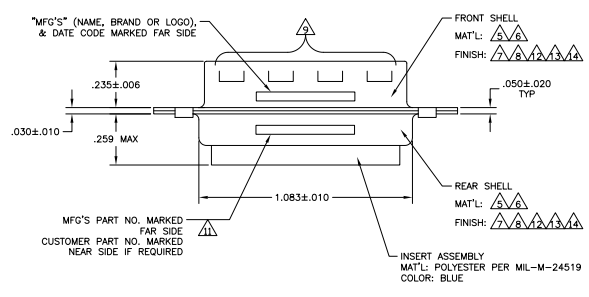
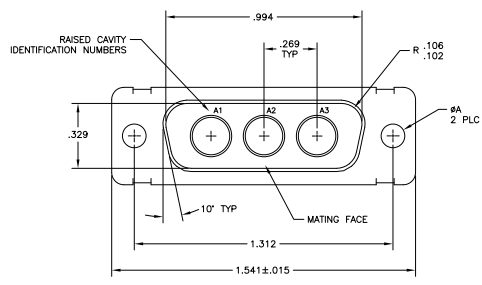


| REV | DATE | DESCRIPTION | BY | CHK | APP |
|-----|------|---------------------------|----|-----|----------------|
| DF | DO | | | | |
| F | | REVISED PER ECO-09-012539 | | | 20-01-09 CT RL |



- THIS PLUG WILL MATE WITH ANY 3C3, SIZE 2 RECEPTACLE IN AMPLIMITE SERIES.
- THIS PLUG IS DESIGNED TO CONFORM TO THE LATEST ISSUE OF MIL-C-24308.
- THIS CONNECTOR ACCEPTS (3) POWER 8, OR COAX PIN CONTACTS IN POSITIONS A1 THRU A3, PURCHASED SEPARATELY.
 - RAISED NUMBERS FOR IDENTIFICATION OF CIRCUIT HOLES.
 - STEEL PER ASTM-A-109.
 - BRASS PER MIL-C-50 AND ASTM-B-36 UNS NO. C26000.
 - CADMIUM PLATED PER QQ-P-416.
 - GOLD PLATED PER MIL-G-45204 TYPE II, GRADE C, CLASS 1 OVER COPPER PER MIL-C-14550, CLASS IV.
 - GROUNDING INDENTS FOR 448153-4 & 5-448153-4 ONLY.
 - "MFG'S" (NAME, BRAND OR LOGO) AND DATE CODE INK STAMPED ON FRONT SHELL, FAR SIDE. MFG'S PART NUMBER INK STAMPED ON REAR SHELL, FAR SIDE. FAR SIDE REFERS TO WIDE SIDE OF KEYSTONE.
 - CUSTOMER PART NUMBER MAY BE SPLIT BETWEEN FRONT AND REAR SHELL, NEAR SIDE.
 - FINISH: TIN PER ASTM-B-545 .000200 MIN THK OVER COPPER PER AMS2418 .000100-.000200 THK.
 - FINISH: TIN PER ASTM-B-545 .000200 MIN THK OVER COPPER PER AMS2418 .000100-.000200 THK.
 - FINISH: ZINC PLATE PER ASTM-B-633 .000200-.000400 THK WITH SUPPLEMENTARY CHROMATE (C3+).

| | | | |
|--|-------------|-----------------|------------|
| | .120 [3.05] | T5935-0103-002 | 448153-7 |
| | .120 [3.05] | - | 5-448153-4 |
| | .120 [3.05] | - | 5-448153-1 |
| | .120 [3.05] | B010942-0013 | 448153-5 |
| | .120 [3.05] | - | 448153-4 |
| | .154 [3.91] | 311P405-7P-B-15 | 448153-3 |
| | .120 [3.05] | 311P405-7P-B-12 | 448153-2 |
| | .120 [3.05] | - | 448153-1 |

| THIS DRAWING IS A CONTROLLED DOCUMENT. | | REV | DATE | DESCRIPTION | BY | CHK | APP |
|--|-------|-------------|------|-------------|-----|-----|-----|
| REV | DATE | DESCRIPTION | BY | CHK | APP | | |
| 1 | 00779 | 448153 | | | | | |

TYS Electronics Corporation
 Harrisburg, PA 17105-3608
 PLUG ASSEMBLY
 AMPLIMITE 3C3
 SIZE 2, SERIES 1009, COAX
 SIZE: A1 00779 (S)=448153
 SHEET: 4-1 OF 1