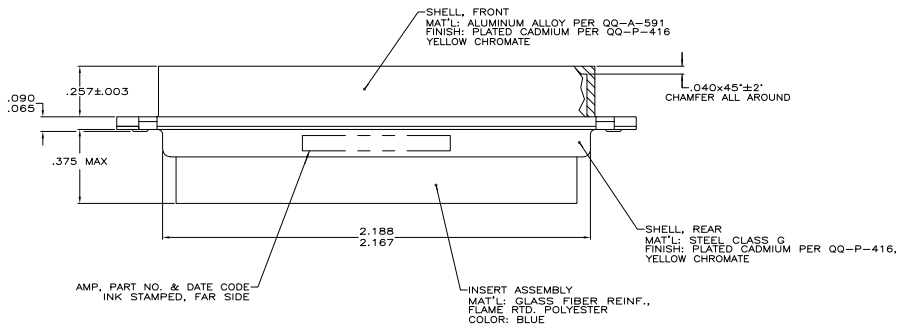
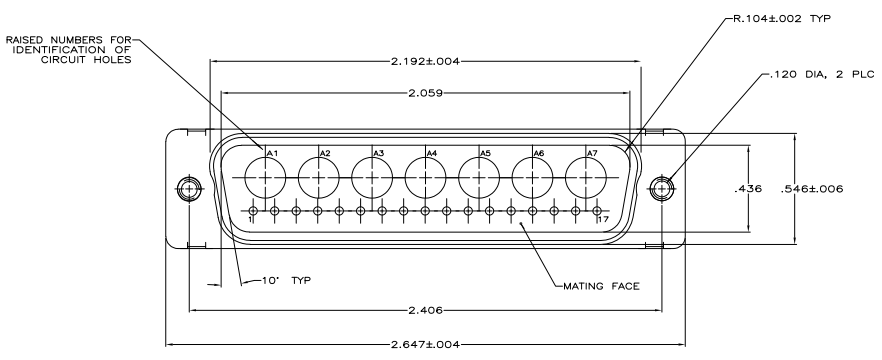


THIS DRAWING IS UNPUBLISHED
 RECEIVED FOR REPRODUCTION
 © 2008 YAESU ELECTRONICS CORPORATION. ALL RIGHTS RESERVED.

REV	DATE	DESCRIPTION	BY	CHK	APP
1					
2					
3					
4					
5					
6					
7					
8					



1. THIS PLUG WILL MATE WITH ANY 24C7, SIZE 5 RECEPTACLE IN AMPLIMITE SERIES.
 2. MAXIMUM WIRE INSULATION TO BE USED WITH THIS PLUG IS .068 DIA.
 3. STAINLESS STEEL RETENTION ARE INCLUDED IN INSERT ASSEMBLY.
 4. THIS CONNECTOR ACCEPTS SIZE 20 PIN SIGNAL CONTACTS. NOT SUPPLIED WITH CONNECTOR.
 5. INSERTION/EXTRACTION TOOL USED FOR SIZE 20 PIN SIGNAL CONTACTS IS 91067-2.
 6. USE 7 POWER OR COAX PIN CONTACTS. CONSULT PRODUCT ENGR. FOR MORE DETAILS.
- ▲ UL/CSA DESIGNATION STAMPED IN THIS AREA

446631-1
 PART NO

THIS DRAWING IS A CONTROLLED DOCUMENT.		REV. C. THOMAS 6/14/82	YAESU	YAESU Electronics Corporation Harrisburg, PA 17105-3608
DESIGNER	ENGINEER	DATE	REV	DESCRIPTION
MOSES	THOMAS	6/15/82	1	PLUG ASSY, AMPLIMITE COMM. MIX, 24C7, SIZE 5, SERIES 119, BULKMATE.
ISSUED	BY	DATE	BY	REWORKED TO
SEE CALLOUTS	SEE CALLOUTS			
CUSTOMER DRAWING		SIZE	DATE	REV
		A1	00779	G=446631