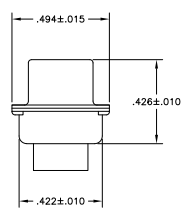
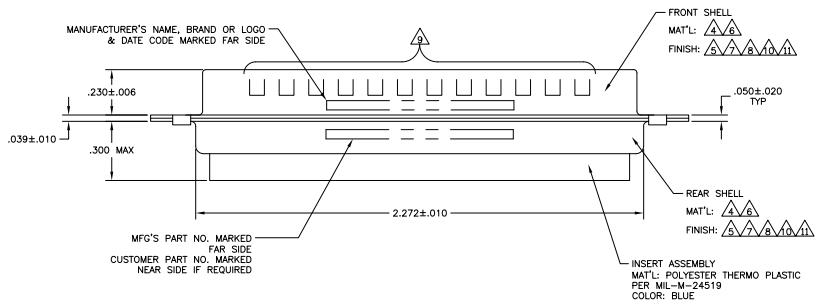


1. THIS PLUG WILL MATE WITH ANY 8CS, SIZE 4 RECEPTACLE IN AMPLIMITE SERIES.
  2. USE (8) SIZE 8 POWER, OR COAX PIN CONTACTS. CONSULT PRODUCT ENGINEERING FOR MORE DETAILS.
- ▲ UL/CSA DESIGNATION STAMPED IN THIS AREA, OPTIONAL.
  - ▲ STEEL PER ASTM-A-109.
  - ▲ CADMIUM PLATED PER QQ-P-416, TYPE II, CLASS 2.
  - ▲ BRASS PER ASTM-B-36 AND MIL-C-50.
  - ▲ FINISH: PLATED GOLD PER ASTM-B-488, TYPE 3, CODE C, CLASS 1.25 OVER COPPER PER MIL-C-14550, CLASS IV.
  - ▲ FINISH: TIN PER ASTM-B-545 .000200 MIN THK OVER COPPER PER AMS2418 .000100-.000200 THK.
  - ▲ GROUNDING INDENTS FOR 446405-4 & 5-446405-4 ONLY.
  - ▲ FINISH: TIN PER ASTM-B-545 .000200 MIN THK OVER COPPER PER AMS2418 .000100-.000200 THK.
  - ▲ FINISH: ZINC PLATE PER ASTM-B-633 .000200-.000400 THK WITH SUPPLEMENTARY CHROMATE (Cr3+).



REMARKS	CUSTOMER PART NO.	8A	DESCRIPTION	PART NO.
▲▲▲▲▲		.120	MIL-C-24308 EQUIVALENT	5-446405-4
▲▲▲▲▲	B010942-0041	.120		5-446405-1
▲▲▲▲▲	ST81D284-001	.120		446405-6
▲▲▲▲▲		.120		446405-5
▲▲▲▲▲	97942-645A935H02	.120		446405-4
▲▲▲▲▲	311P405-15P-B-15	.154	NON-MAGNETIC NASA QUALIFIED	446405-3
▲▲▲▲▲	311P405-15P-B-12	.120	NON-MAGNETIC NASA QUALIFIED	446405-2
▲▲▲▲▲		.120	MIL-C-24308 EQUIVALENT	446405-1

THIS DRAWING IS A CONTROLLED DOCUMENT.

DESIGNER: [Signature] DATE: 02-01-82  
 CHECKED: [Signature] DATE: 02-01-82  
 APPROVED: [Signature] DATE: 02-01-82

Part: PLUG ASSEMBLY  
 AMPLIMITE 8CS  
 COAX MUX, SIZE 4

SIZE: A1  
 DATE: 00779  
 DRAWING NO: 446405

CUSTOMER DRAWING