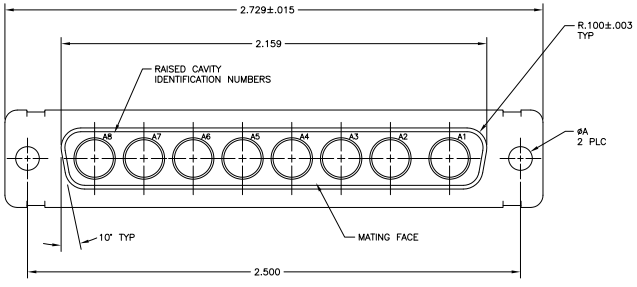
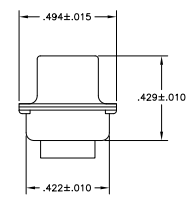
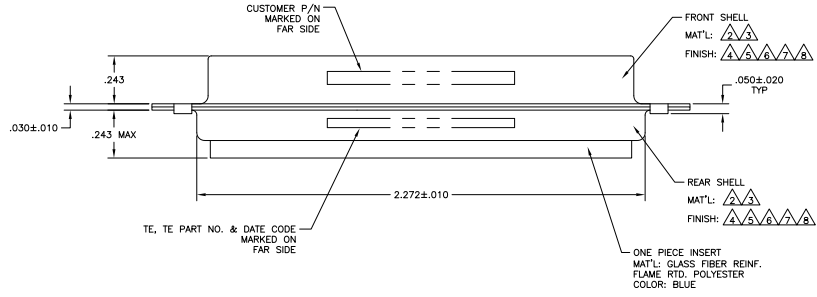


THIS DRAWING IS UNPUBLISHED
 © 2008 TE Connectivity
 ALL RIGHTS RESERVED

REV	DATE	DESCRIPTION	BY	CHK	APP
1		REVISED PER EDD-11-022076			



- THIS CONNECTOR ACCEPTS (8) POWER 8, OR COAX SOCKET CONTACTS IN POSITIONS A1 THRU A8, PURCHASED SEPARATELY.
- STEEL PER ASTM-A-109.
- BRASS PER MIL-C-50 AND ASTM-B-36 UNS NO. C26000.
- FINISH: CADMIUM PLATED PER QQ-P-416.
- GOLD PLATED PER ASTM-B-488 TYPE 3, CODE C, CLASS 1.25 OVER COPPER PER MIL-C-14550, CLASS IV.
- FINISH: TIN PER ASTM-B-545 .000200 MIN THK OVER COPPER PER AMS2418 .000100-.000200 THK.
- FINISH: TIN PER ASTM-B-545 .000200 MIN THK OVER COPPER PER AMS2418 .000100-.000200 THK.
- FINISH: ZINC PLATED PER ASTM-B-633 .000200-.000400 THK WITH SUPPLEMENTARY CHROMATE (Cr3+).



PRELIMINARY-- NOT RELEASED FOR PRODUCTION

△△△	.120	-	5-445730-5
△△△	.120	-	5-445730-1
△△△	.120	13508255	445730-8
△△△	.120	ST81D284-002	445730-7
△△△	.120	B010942-0042	445730-6
△△△	.120	-	445730-5
△△△	.154	311P405-15S-B-15	445730-4
△△△	.120	311P405-15S-B-12	445730-3
△△△	.120	2037AS246-01,00779,3003	445730-2
△△△	.120	-	445730-1
REMARKS	∅A	CUSTOMER PART NO.	PART NO.

THIS DRAWING IS A CONTROLLED DOCUMENT. SHEET 01-001-01

TE Connectivity

RECEPTACLE ASSEMBLY
 AMPLIMITE 808
 SIZE 8, SERIES 100, COAX

DATE: 01-001-01
 SIZE: A1
 DRAWING NO: 00779
 CUSTOMER DRAWING