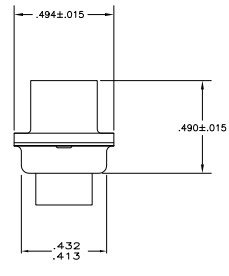
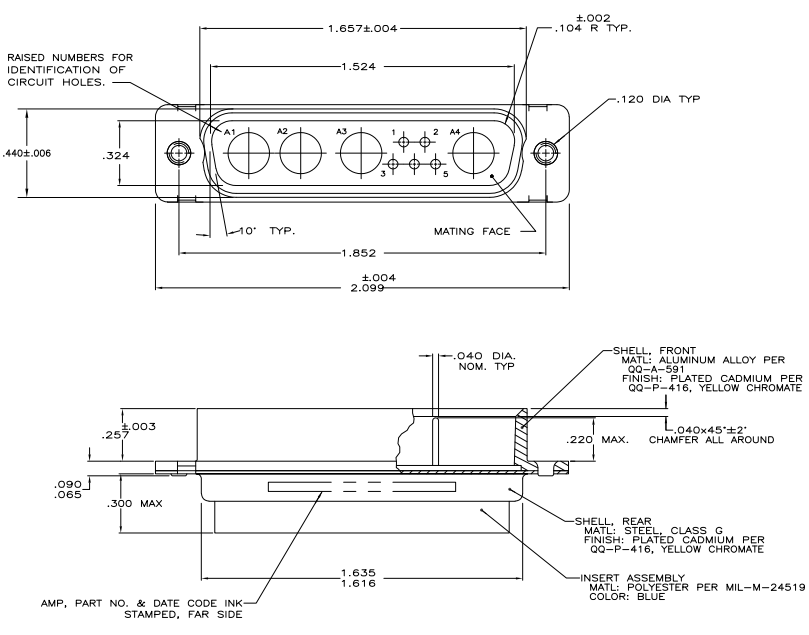


THIS DRAWING IS UNPUBLISHED. REPRODUCED FOR INFORMATION. ALL RIGHTS RESERVED.

REV	DATE	DESCRIPTION	BY	APP
DF	DO			
C		REV PER EC 0414-0277-02	11/20/06	BL/CCT



1. THIS PLUG WILL MATE WITH ANY 9C4 SIZE 3 RECEPTACLE IN AMPLIMITE SERIES.
2. MAXIMUM WIRE INSULATION TO BE USED WITH THIS PLUG IS .068 DIA.
3. STAINLESS STEEL RETENTION CLIPS (5) ARE INCLUDED IN INSERT ASSEMBLY.
4. CONNECTOR SUPPLIED WITHOUT CONTACTS; SHOWN FOR ILLUSTRATION ONLY.
5. THIS CONNECTOR ACCEPTS SIZE 20 PIN SIGNAL CONTACTS.
6. USE 4 SIZE 8 POWER OR COAX PIN CONTACTS. CONSULT PRODUCT ENGINEERING FOR MORE DETAILS.

THIS DRAWING IS A CONTROLLED DOCUMENT.		REV. C. THOMAS 11/27/06	REV. B. THOMAS 11/27/06	REV. A. THOMAS 11/27/06
DESIGNER: [Signature]		DATE: 11/27/06	APP: [Signature]	DATE: 11/27/06
CHECKED: [Signature]		DATE: 11/27/06	APP: [Signature]	DATE: 11/27/06
DRAWN: [Signature]		DATE: 11/27/06	APP: [Signature]	DATE: 11/27/06
SCALE: SEE CALLOUTS		SEE CALLOUTS	SEE CALLOUTS	SEE CALLOUTS
CUSTOMER DRAWING		DATE: 11/27/06	REV: 1	APP: [Signature]

11/20/06 1:57pm u008845 H:\Chen\Thomas\0414-277-05\445701_1.cdw

445701-1 PART NO