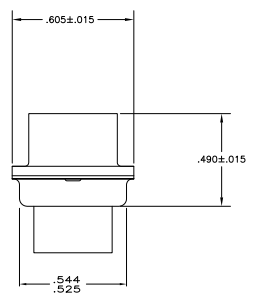
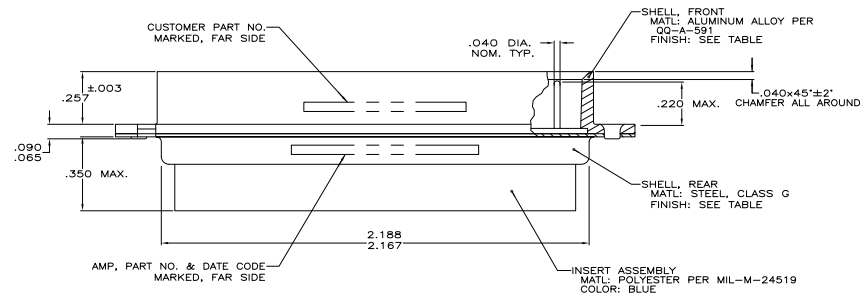
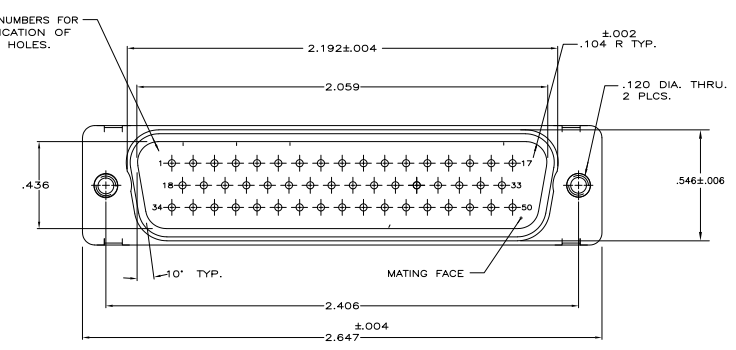


REV	DATE	DESCRIPTION	BY	CHK	APP
DF	DO				
L		REV PER ECU-08-005446		DTAPP08	TK CT



1. THIS PLUG WILL MATE WITH ANY 50 POSN. SIZE 5 RECEPTACLE IN AMPLIMITE SERIES.
 2. MAXIMUM WIRE INSULATION TO BE USED WITH THIS PLUG IS .068 DIA.
 3. BE-CU RETENTION CLIPS ARE INCLUDED IN INSERTS.
 4. THIS PLUG IS DESIGNED TO CONFORM TO THE LATEST ISSUE OF MIL-C-24308.
 5. CONNECTOR SUPPLIED WITHOUT CONTACTS SHOWN FOR ILLUSTRATION ONLY.
 6. THIS PLUG WILL ACCEPT SIZE 20 DM PIN CONTACT M39029/64-369.
- △ KIT INCLUDES CONTACT P/N 205089-1
 - △ FINISH CADMIUM PER QQ-P-416; YELLOW CHROMATE.
 - △ FINISH ZINC PLATED PER ASTM-B-633 .000200 MIN THK WITH SUPPLEMENTARY CHROMATE (C-3).

--	△	5-445009-1
△	△	445009-2
--	△	445009-1
REMARKS	FINISH	PART NO.

THIS DRAWING IS A CONTROLLED DOCUMENT.		REV	DATE	DESCRIPTION	BY	CHK	APP
1	1-13-88						
2	1-28-88						
3	1-28-88						
4	1-28-88						
5	1-28-88						
6	1-28-88						
7	1-28-88						
8	1-28-88						
9	1-28-88						
10	1-28-88						
11	1-28-88						
12	1-28-88						
13	1-28-88						
14	1-28-88						
15	1-28-88						
16	1-28-88						
17	1-28-88						
18	1-28-88						
19	1-28-88						
20	1-28-88						
21	1-28-88						
22	1-28-88						
23	1-28-88						
24	1-28-88						
25	1-28-88						
26	1-28-88						
27	1-28-88						
28	1-28-88						
29	1-28-88						
30	1-28-88						
31	1-28-88						
32	1-28-88						
33	1-28-88						
34	1-28-88						
35	1-28-88						
36	1-28-88						
37	1-28-88						
38	1-28-88						
39	1-28-88						
40	1-28-88						
41	1-28-88						
42	1-28-88						
43	1-28-88						
44	1-28-88						
45	1-28-88						
46	1-28-88						
47	1-28-88						
48	1-28-88						
49	1-28-88						
50	1-28-88						
51	1-28-88						
52	1-28-88						
53	1-28-88						
54	1-28-88						
55	1-28-88						
56	1-28-88						
57	1-28-88						
58	1-28-88						
59	1-28-88						
60	1-28-88						
61	1-28-88						
62	1-28-88						
63	1-28-88						
64	1-28-88						
65	1-28-88						
66	1-28-88						
67	1-28-88						
68	1-28-88						
69	1-28-88						
70	1-28-88						
71	1-28-88						
72	1-28-88						
73	1-28-88						
74	1-28-88						
75	1-28-88						
76	1-28-88						
77	1-28-88						
78	1-28-88						
79	1-28-88						
80	1-28-88						
81	1-28-88						
82	1-28-88						
83	1-28-88						
84	1-28-88						
85	1-28-88						
86	1-28-88						
87	1-28-88						
88	1-28-88						
89	1-28-88						
90	1-28-88						
91	1-28-88						
92	1-28-88						
93	1-28-88						
94	1-28-88						
95	1-28-88						
96	1-28-88						
97	1-28-88						
98	1-28-88						
99	1-28-88						
100	1-28-88						