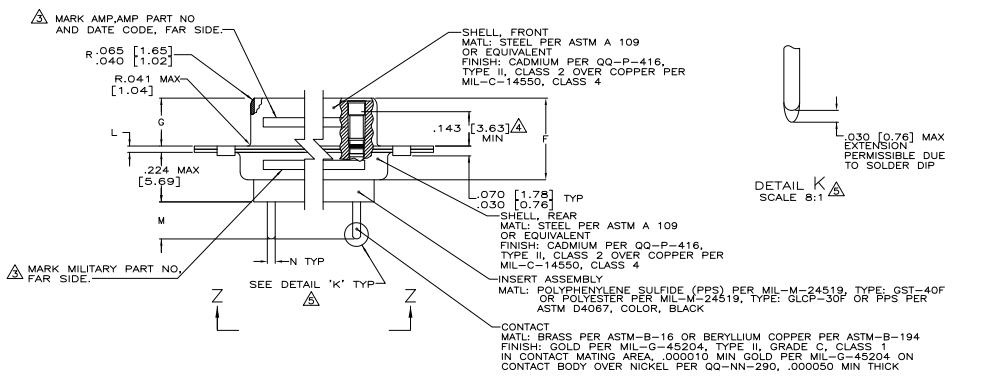
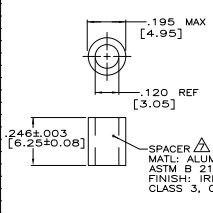


- △ SEE SHEET 2 FOR RECOMMENDED P.C. BOARD LAYOUT. TRUE POSITION TOLERANCE FOR P.C. BOARD LAYOUT IS .010 [0.25] AT MAX MATERIAL CONDITION. SUGGESTED BOARD THICKNESS IS .125 [3.18]
- 2. THE CONNECTORS DESCRIBED IN THIS DOCUMENT MEET THE REQUIREMENTS OF MIL-C-24308 AND MATE WITH ANY PLUG CONNECTOR WITH SAME INSERT ARRANGEMENT.
- △ MARK WITH .047 [1.19]-.062 [1.57] HIGH CHARACTERS. FAR SIDE REFERS TO THE WIDE SIDE OF THE KEYSTONE. NEAR SIDE REFERS TO THE NARROW SIDE OF THE KEYSTONE. IF THE REAR SHELL IS TOO SMALL FOR THE ENTIRE MILITARY PART NUMBER, MARKING SHALL BE LOCATED AS FOLLOWS:
  - A. "M24308" ON FRONT SHELL, FAR SIDE.
  - B. SLASH SHEET AND DASH NUMBER ON REAR SHELL, FAR SIDE.
  - C. "AMP" AND DATE CODE ON FRONT SHELL, NEAR SIDE.
  - D. AMP PART NUMBER ON REAR SHELL, NEAR SIDE.
- IF THE FRONT SHELL IS TOO SMALL FOR "AMP", AMP PART NUMBER AND DATE CODE, THEN SPLIT AS FOLLOWS:
  - A. AMP PART NUMBER ON REAR SHELL, NEAR SIDE.
  - B. "AMP" AND DATE CODE ON FRONT SHELL, NEAR SIDE.
  - C. MILITARY PART NUMBER ON REAR SHELL, FAR SIDE.
- △ POINT OF ELECTRICAL ENGAGEMENT - AS MEASURED WITH A .0390 [0.991]-.0393 [0.998] DIA SQUARE ENDED TEST PIN.
- △ SOLDER DIP PER MIL-STD-2000 COMPOSITION Sn63 CONFORMING TO QQ-S-571. COVERAGE SHALL BE COMPLETE TO A DISTANCE .020 [0.51] MAX FROM INSERT ASSEMBLY.
- 6. THE SOLDER DIP PROCESS IS PERFORMED SUBSEQUENT TO THE COMPLETION OF PRODUCTION OF THE MILITARY QUALIFIED CONNECTOR. DIMENSIONS APPLY PRIOR TO SOLDER DIPPING.
- △ SPACERS (QTY 2) ARE SUPPLIED WITH CONNECTORS (NOT ATTACHED TO THE CONNECTOR).
- 8. DIMENSIONS AND TOLERANCES PER ANSI Y14.5M-1982.
- 9. THIS DRAWING SHALL BE INTERPRETED IN ACCORDANCE WITH APPLICABLE STANDARDS LISTED IN MIL-STD-100.



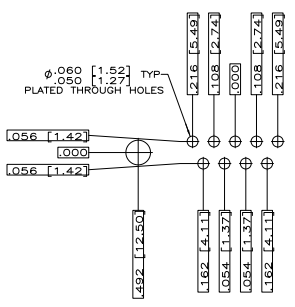
NO	DESCRIPTION	QTY	UNIT	MILITARY P/N	AMP P/N	PART NUMBER										
.544	13.82	2.188	55.58													
.524	13.31	2.168	55.07													
		2.282	57.96													
		2.262	57.45													
		1.635	41.53													
.432	10.97	1.615	41.02													
.412	10.46	1.093	27.76													
		1.073	27.25													
		.769	19.53													
		.749	19.02													
.544	13.82	2.188	55.58													
.524	13.31	2.168	55.07													
		2.282	57.96													
		2.262	57.45													
		1.635	41.53													
.432	10.97	1.615	41.02													
.412	10.46	1.093	27.76													
		1.073	27.25													
		.769	19.53													
		.749	19.02													
.620	15.75	.428	10.87	2.411	61.24	2.069	52.55	2.650	67.31	MS18277-1	50	5	M24308/23-17F	443977-5	1-443977-0	
.590	14.99	.418	10.62	2.401	60.98	2.059	52.30	2.620	66.55	MS18276-1	37	4	M24308/23-16F	443977-4	443977-9	
				2.505	63.63	2.164	54.97	2.744	69.70							
				2.485	63.37	2.154	54.71	2.714	68.94							
				1.857	47.17	1.516	38.51	2.103	53.42	MS18275-1	25	3	M24308/23-15F	443977-3	443977-8	
				1.847	46.91	1.506	38.25	2.073	52.65							
				1.317	33.45	.976	24.79	1.556	39.52							
				1.307	33.20	.966	24.54	1.526	38.76	MS18274-1	15	2	M24308/23-14F	443977-2	443977-7	
				.989	25.12	.648	16.46	1.228	31.19							
				.979	24.87	.638	16.21	1.198	30.43	MS18273-1	9	1	M24308/23-13F	443977-1	443977-6	
				2.411	61.24	2.069	52.55	2.650	67.31	MS18277-1	50	5	M24308/23-17F	443977-5	443977-0	
				2.401	60.98	2.059	52.30	2.620	66.55	MS18277-1	50	5	M24308/23-17F	443977-5	443977-5	
				2.505	63.63	2.164	54.97	2.744	69.70							
				2.485	63.37	2.154	54.71	2.714	68.94							
				1.857	47.17	1.516	38.51	2.103	53.42	MS18275-1	25	3	M24308/23-15F	443977-4	443977-3	
				1.847	46.91	1.506	38.25	2.073	52.65							
				1.317	33.45	.976	24.79	1.556	39.52							
				1.307	33.20	.966	24.54	1.526	38.76	MS18274-1	15	2	M24308/23-14F	443977-2	443977-2	
				.989	25.12	.648	16.46	1.228	31.19							
				.979	24.87	.638	16.21	1.198	30.43	MS18273-1	9	1	M24308/23-13F	443977-1	443977-1	



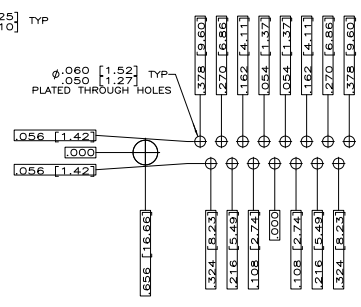
THIS DRAWING IS A CONTROLLED DOCUMENT	NO OF COPIES	NO OF SHEETS	MILITARY P/N	AMP P/N	PART NUMBER
1	1	1			

THIS DRAWING IS UNPUBLISHED. ALL RIGHTS RESERVED.  
 © 2005 BY TYS ELECTRONICS CORPORATION

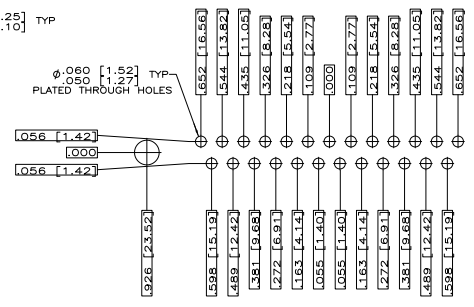
REV	DATE	DESCRIPTION	BY	APP'D
1				



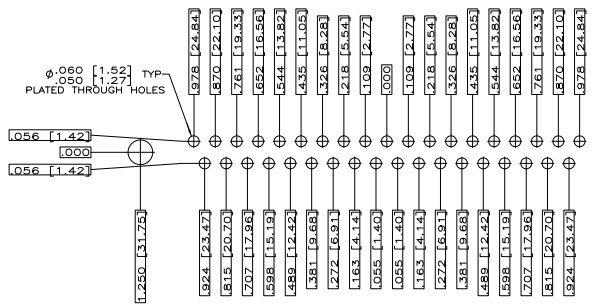
RECOMMENDED P.C. BOARD LAYOUT  
 SHELL SIZE 1 (9 POSITION) ▲



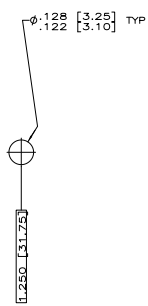
RECOMMENDED P.C. BOARD LAYOUT  
 SHELL SIZE 2 (15 POSITION) ▲



RECOMMENDED P.C. BOARD LAYOUT  
 SHELL SIZE 3 (25 POSITION) ▲



RECOMMENDED P.C. BOARD LAYOUT  
 SHELL SIZE 4 (37 POSITION) ▲



RECOMMENDED P.C. BOARD LAYOUT  
 SHELL SIZE 5 (50 POSITION) ▲

THIS DRAWING IS A CONTROLLED DOCUMENT.		TYS ELECTRONICS CORPORATION	
DESIGNED BY	APPROVED BY	DATE	REV
PROJECT NAME	MIL-C-24308		
SIZE	A1 00779 443977		
CUSTOMER DRAWING	DATE	REV	DATE
	4.1	2	2