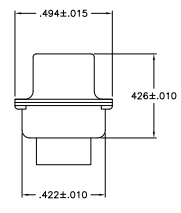
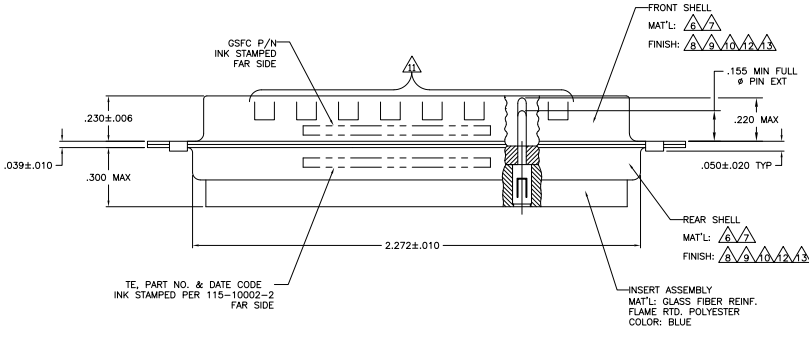
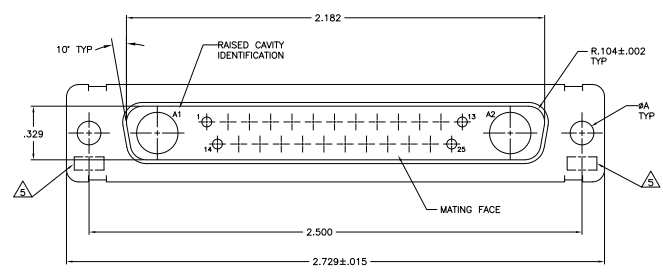


THIS DRAWING IS UNPUBLISHED
 ALL RIGHTS RESERVED

REV	DATE	DESCRIPTION	BY	CHK	APP
DF	DO	REVISED PER EDD-11-012856			



- THIS PLUG WILL MATE WITH ANY 27C2, SIZE 4 RECEPTACLE IN AMPLIMITE SERIES.
 - MAXIMUM WIRE INSULATION TO BE USED WITH THIS PLUG IS #.068.
 - THIS CONNECTOR ACCEPTS (2) POWER B, OR COAX PIN CONTACTS IN POSITIONS A1 THRU A2, PURCHASED SEPARATELY.
 - THIS CONNECTOR ACCEPTS SIZE 20 PIN SIGNAL CONTACTS IN POSITIONS 1 THRU 25, PURCHASED SEPARATELY.
- ▲ UL/CSA DESIGNATION STAMPED IN THIS AREA, OPTIONAL.
 - ▲ STEEL PER ASTM-A-109.
 - ▲ BRASS PER MIL-C-50 AND ASTM-B-36 UNS NO. C26000.
 - ▲ CADMIUM PLATED PER QQ-P-416.
 - ▲ FINISH: GOLD PLATED PER MIL-G-45204 TYPE II, GRADE C, CLASS 1 OVER COPPER PER MIL-C-14550, CLASS IV.
 - ▲ FINISH: TIN PER ASTM-B-545, .000200 MIN THK OVER COPPER PER AMS2418 .000100-.000200 THK.
 - ▲ GROUNDING INDENTS FOR 212538-4 & 5-212538-4 ONLY.
 - ▲ FINISH: TIN PER ASTM-B-545, .000200 MIN THK OVER COPPER PER AMS2418 .000100-.000200 THK.
 - ▲ FINISH: ZINC PLATE PER ASTM-B-633 .000200-.000400 THK WITH SUPPLEMENTARY CHROMATE (Cr3+).

▲▲▲▲	.120	-	5-212538-4
▲▲▲	.120	-	5-212538-1
▲▲▲▲▲	.120	-	212538-4
▲▲▲▲	.154	311P405-21P-B-15	212538-3
▲▲▲▲	.120	311P405-21P-B-12	212538-2
▲▲▲	.120	-	212538-1

THIS DRAWING IS A CONTROLLED DOCUMENT. THE C. THOMAS STUBBS

TE Connectivity

PLUG ASSEMBLY
 AMPLIMITE 27C2
 SIZE 4, SERIES 109, COAX MIX

DATE: 11/07/79 DRAWING NO: A100779 Q=212538

CUSTOMER DRAWING