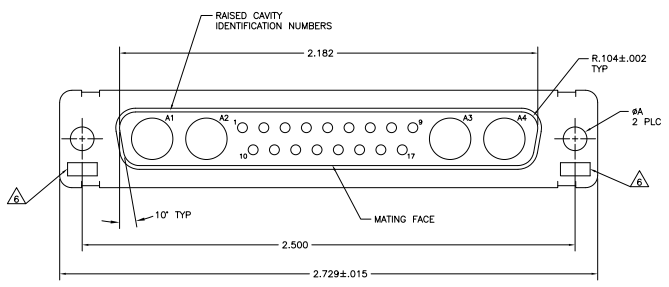
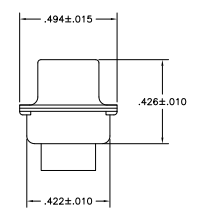
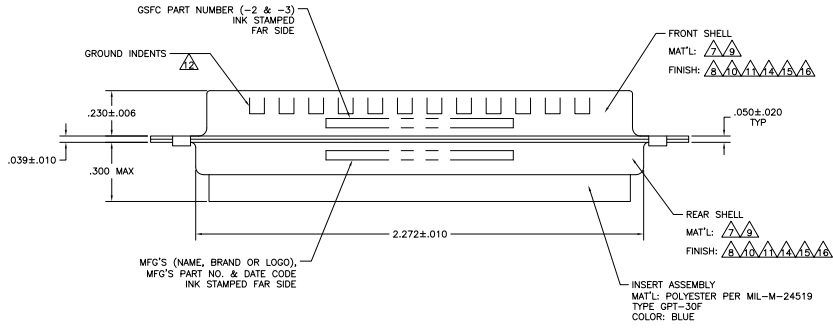


REV	DATE	DESCRIPTION	BY	CHK	APP
N	21-08-08		PK	EW	
P	20-03-09		CT	RL	



1. THIS PLUG WILL MATE WITH ANY 21C4, SIZE 4 RECEPTACLE IN AMPLIMITE SERIES.
  2. MAXIMUM WIRE INSULATION TO BE USED WITH THIS PLUG IS #.072.
  3. RETENTION CLIPS (17) ARE INCLUDED IN INSERT ASSEMBLY.
  4. THIS CONNECTOR ACCEPTS SIZE 20 PIN CONTACTS, NOT PROVIDED, IN CAVITIES 1 THRU 17.
  5. CAVITIES A1 THRU A4 ACCEPTS SIZE 8 POWER OR COAX PIN CONTACTS, NOT PROVIDED. RIGHT ANGLE COAX CONTACTS WILL NOT SEAT IN THIS CONNECTOR.
- ⚠ UL/CSA DESIGNATION STAMPED IN THIS AREA, OPTIONAL.  
 ⚠ MATERIAL: STEEL PER ASTM-A-109.  
 ⚠ FINISH: CADMIUM PLATED PER QQ-P-416, TYPE II, CLASS 2.  
 ⚠ MATERIAL: BRASS PER ASTM-B-36.  
 ⚠ FINISH: GOLD PER MIL-C-45204, TYPE II, GRADE C, CLASS 1 OVER COPPER PER MIL-C-14550, CLASS IV.  
 ⚠ FINISH: TIN PER ASTM-B-545 .000200 MIN THK OVER COPPER PER AMS2418 .000100-.000200 THK.  
 ⚠ GROUNDING INDENTS FOR 212530-4, 212530-5, & 5-212530-4 ONLY.  
 13. 212530-6 IS OBSOLETE.  
 ⚠ FINISH: BRIGHT TIN PER ASTM-B-545 .000400-.000550 THK OVER COPPER PER AMS2418 .000050 MIN THK.  
 ⚠ FINISH: TIN PER ASTM-B-545 .000200 MIN THK OVER COPPER PER AMS2418 .000100-.000200 THK.  
 ⚠ FINISH: ZINC PLATE PER ASTM-B-633 .000200-.000400 THK WITH SUPPLEMENTARY CHROMATE (Cr3+).



⚠	.120	-	5-212530-4
⚠	.120	-	5-212530-1
⚠	.120	-	212530-6
⚠	.120	-	212530-5
⚠	.120	-	212530-4
⚠	.154	311P405-18P-B-15	212530-3
⚠	.120	311P405-18P-B-12	212530-2
⚠	.120	-	212530-1

THIS DRAWING IS A CONTROLLED DOCUMENT. **THOMAS** 21-08-08 **TYS** Tys Electronics Corporation Harrisburg, PA 17105-3608

DIMENSIONS: INCHES  
 UNLESS OTHERWISE SPECIFIED: INCHES  
 DECIMALS: .0005  
 FRACTIONS: 1/16  
 ANGLES: 10 MIN  
 SURFACE FINISH: RA 1.6  
 TOLERANCES: .0005  
 DIMENSIONS: .0005  
 DIMENSIONS: .0005  
 DIMENSIONS: .0005

CUSTOMER DRAWING: 00779  
 SIZE: 4:1  
 SHEET: 1 of 1  
 REV: P