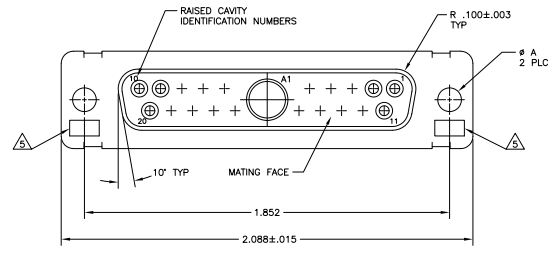
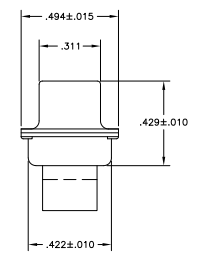
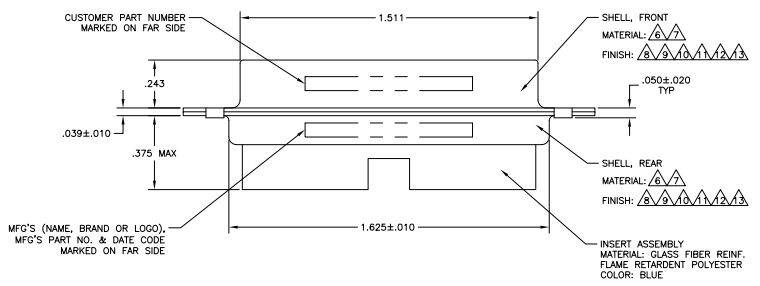


REV	DATE	DESCRIPTION	BY	CHK	APP
1					
2					
3					
4					
5					
6					
7					
8					



- THIS RECEPTACLE WILL MATE WITH ANY 21C1, SIZE 3 PLUG IN AMPLITE SERIES.
 - MAXIMUM WIRE INSULATION TO BE USED WITH THIS RECEPTACLE IS #068.
 - THIS CONNECTOR ACCEPTS (1) SIZE 8 POWER OR COAX SOCKET CONTACT IN POSITION A1, PURCHASED SEPARATELY.
 - THIS CONNECTOR ACCEPTS SIZE 20 SOCKET SIGNAL CONTACTS IN POSITIONS 1 THRU 20, PURCHASED SEPARATELY.
- UL/CSA DESIGNATION STAMPED IN THIS AREA, OPTIONAL.
 - STEEL PER ASTM-A-109.
 - BRASS PER MIL-C-50 AND ASTM-B-36 UNS NO. C26000.
 - FINISH: CADMIUM PLATED PER QQ-P-416.
 - FINISH: GOLD PLATED PER MIL-G-45204 TYPE II, GRADE C, CLASS 1 OVER COPPER PER MIL-C-14550, CLASS IV.
 - FINISH: TIN PER ASTM-B-545 .000200 MIN THK OVER COPPER PER AMS2418 .000100-.000200 THK.
 - FINISH: BRIGHT TIN PER ASTM-B-545 .000400-.000550 THK OVER COPPER PER AMS2418 .000050 MIN THK.
 - FINISH: TIN PER ASTM-B-545 .000200 MIN THK OVER COPPER PER AMS2418 .000100-.000200 THK.
 - FINISH: ZINC PLATE PER ASTM-B-633 .000200-.000400 THK WITH SUPPLEMENTARY CHROMATE (Cr3+).



REMARKS	φ A	CUSTOMER P/N	PART NO.
	.120	TS935-0103-001	212526-7
	.120	-	5-212526-2
	.120	-	5-212526-1
	.120	-	212526-6
	.120	B010942-0040	212526-5
	.154	311P405-14S-B-15	212526-4
	.120	311P405-14S-B-12	212526-3
	.120	-	212526-2
	.120	-	212526-1

THIS DRAWING IS A CONTROLLED DOCUMENT. TYS ELECTRONICS CORPORATION, Harrisburg, Pa 17105-3608

RECEPTACLE ASSEMBLY, AMPLITE, 21C1 SIZE 3, SERIES 109, COAX MIX

DATE: 00779, DRAWING NO: 212526

CUSTOMER DRAWING