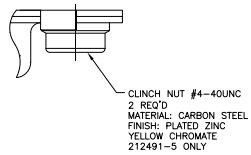
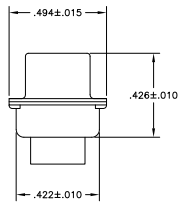
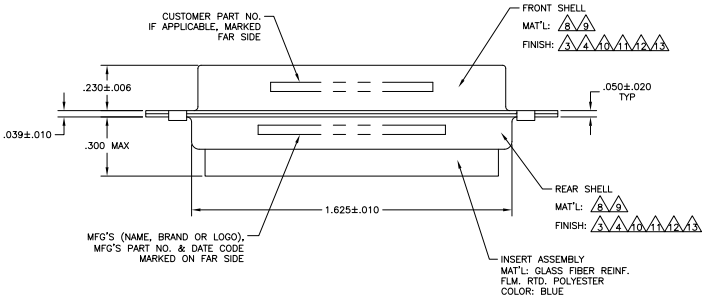


- THIS PLUG WILL MATE WITH ANY SC5, SIZE 3 RECEPTACLE IN AMPLIMITE SERIES.
 - USE (S) SIZE 8 POWER, OR COAX PIN CONTACTS. CONSULT PRODUCT ENGINEERING FOR MORE DETAILS.
- △ CADMIUM PLATED PER QQ-P-416, TYPE II, CLASS 2.
 - △ FINISH: TIN PER ASTM-B-545 .000200 MIN THK OVER COPPER PER AMS2418 .000100-.000200 THK.
 - △ GROUNDING INDENTS FOR 212491-3, 212491-5, 212491-9, 5-212491-3, & 5-212491-5 (NOT SHOWN ON DWG).
 - △ 212491-5 & 5-212491-5 SUPPLIED WITH 4-40UNC-2B CLINCH NUTS IN THE MOUNTING HOLE LOCATIONS.
 - △ UL/CSA DESIGNATION STAMPED IN THIS AREA, OPTIONAL.
 - △ STEEL PER ASTM-A-109.
 - △ BRASS PER ASTM-B-36 AND MIL-C-50.
 - △ FINISH: PLATED GOLD PER MIL-C-45204, TYPE II, GRADE C OVER COPPER PLATE PER MIL-C-14550, CLASS IV.
 - △ FINISH: TIN PER ASTM-B-545 .000200 MIN THK OVER COPPER PER AMS2418 .000100-.000200 THK.
 - △ FINISH: BRIGHT TIN PER ASTM-B-545 .000500-.000550 THK OVER COPPER PER AMS2418 .000050 MIN THK.
 - △ FINISH: ZINC PLATE PER ASTM-B-633 .000200-.000400 THK WITH SUPPLEMENTARY CHROMATE (Cr3+).



DESCRIPTION	QTY	ASSEMBLY	PART NO.
NOT APPLICABLE	△	△△△△△	5-212491-5
NOT APPLICABLE	.120	△△△△△	5-212491-3
NOT APPLICABLE	.120	△△△△△	5-212491-1
NOT APPLICABLE	.120	△△△△△	1-212491-0
NOT APPLICABLE	.120	△△△△△	212491-9
B010942-0015	.120	△△△△△	212491-8
311P405-10P-B-15	.154	△△△△△	212491-7
311P405-10P-B-12	.120	△△△△△	212491-6
NOT APPLICABLE	△	△△△△△	212491-5
97942-645A935H02	.120	△△△△△	212491-4
NOT APPLICABLE	.120	△△△△△	212491-3
NOT APPLICABLE	.120	△△△△△	212491-2
NOT APPLICABLE	.120	△△△△△	212491-1

NOT RELEASED FOR PRODUCTION

THIS DRAWING IS A CONTROLLED DOCUMENT. TDS ELECTRONICS CORPORATION, Harrisburg, PA 17108-3608

REVISIONS: 5, REVISED PER ECO-08-012541

PLUG ASSEMBLY AMPLIMITE SC5 SIZE 3, SERIES 109, COAX MIX

CUSTOMER DRAWING: A1 00779 Q=212491