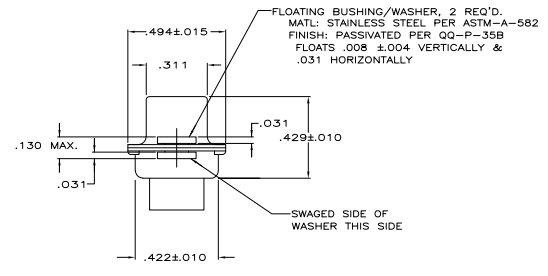
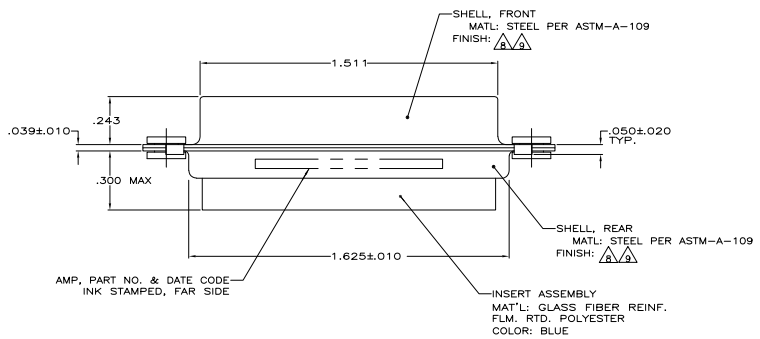
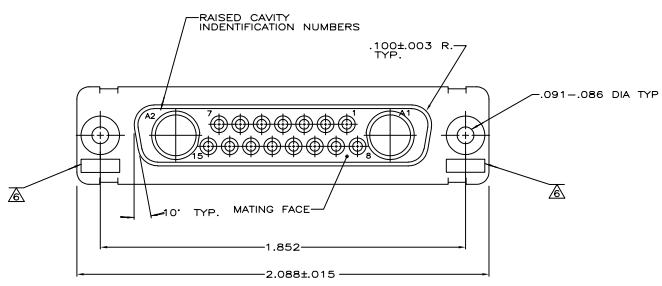


THIS DRAWING IS UNPUBLISHED
 UNLESS OTHERWISE SPECIFIED BY THIS ELECTRONICS CORPORATION. ALL RIGHTS RESERVED.

REV	DATE	REVISIONS	BY	CHK
DF	DO	REVISION		
K		REV PER ECO-05-014837		
		285206	PY	DM

1. THIS RECEPTACLE WILL MATE WITH ANY 17C2, SIZE 3 PLUG IN AMPLITE SERIES.
 2. MAXIMUM WIRE INSULATION TO BE USED WITH THIS RECEPTACLE IS .068 DIA.
 3. STAINLESS STEEL RETENTION CLIPS (15) ARE INCLUDED IN INSERT ASSEMBLY. CONNECTOR SUPPLIED WITH (17) SIGNAL SOCKET CONTACTS; PACKAGED IN A SEPARATE BAG. SIZE 8 POWER/COAX CONTACTS SOLD SEPARATELY.
 5. USE 2 SIZE 8 POWER OR COAX SOCKET CONTACTS. CONSULT PRODUCT ENGINEERING FOR MORE DETAILS.
- ▲ UL/CSA DESIGNATION STAMPED IN THIS AREA, OPTIONAL.
 ▲ MATING FACE SIZE 8 PORTS CHAMFERED TO ACCOMMODATE BLINDMATE APPLICATION.
 ▲ BLIND MATE PLUG 447724-1 WILL MATE WITH THIS CONNECTOR.
 ▲ CADMIUM PER QQ-P-416
 ▲ FINISH: ZINC PLATE PER ASTM-B-633, .000200-.000400 THK WITH SUPPLEMENTARY CHROMATE (Cr3+)



REMARKS	PART NO.
▲▲	5-212053-3
▲▲	212053-3
▲▲	212053-2
▲▲	212053-1

THIS DRAWING IS A CONTROLLED DOCUMENT.		REV. 2-1-80		EPCORP		Tels Electronics Corporation	
DESIGNER	ENGINEER	DATE	REV.	REV.	DATE	REV.	DATE
DO	DO	2-1-80	1	DO	2-1-80	1	2-1-80
NOTES				17C2, SIZE 3, SERIES 109 COAX MAX. W/ FLOAT BUSHINGS			
SEE CALLOUTS				REF. USE CODE DRAWING NO. A100779 Q=212053 CUSTOMER DRAWING			