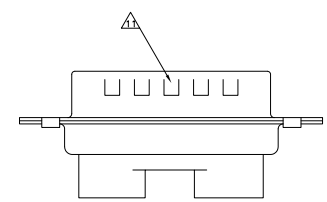
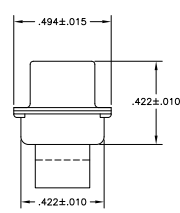
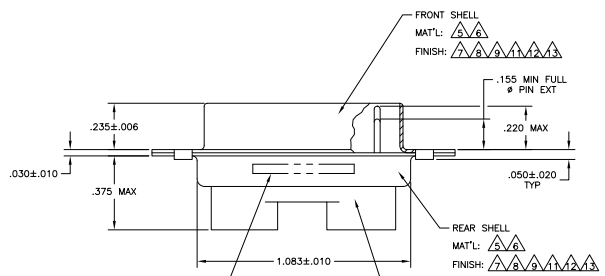
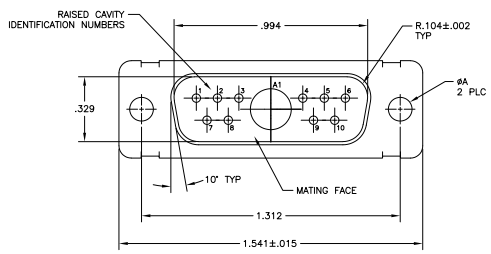


REV	DATE	DESCRIPTION	BY	CHK	APP
1					
2		REVISED PER ECO-09-013174			



CUSTOMER P/N (IF APPLICABLE) MARKED ON FAR SIDE, MANUFACTURER'S NAME, BRAND OR LOGO AND MANUFACTURER'S PART NO AND DATE CODE MARKED ON NEAR SIDE

INSERT ASSEMBLY
 MAT'L: POLYESTER PER MIL-M-24519
 TYPE GPT-30F
 COLOR: BLUE

- THIS PLUG WILL MATE WITH ANY 11C1, SIZE 2 RECEPTACLE IN AMPLIMITE SERIES.
 - MAXIMUM WIRE INSULATION TO BE USED WITH THIS PLUG IS #068.
 - THIS CONNECTOR ACCEPTS (1) POWER, 8, OR COAX PIN CONTACT IN POSITIONS A1, PURCHASED SEPARATELY.
 - THIS CONNECTOR ACCEPTS SIZE 20 PIN CONTACTS IN POSITIONS 1 THRU 32, PURCHASED SEPARATELY.
- ▲ STEEL PER ASTM-A-109.
 - ▲ BRASS PER MIL-C-50 AND ASTM-B-36 UNS NO. C26000.
 - ▲ CADMIUM PLATED PER QQ-P-416.
 - ▲ GOLD PLATED PER MIL-G-45204 TYPE II, GRADE C, CLASS 1 OVER COPPER PER MIL-C-14550, CLASS IV.
 - ▲ FINISH: TIN PER ASTM-B-545 .000200 MIN THK OVER COPPER PER AMS2418 .000100-.000200 THK.
 - ▲ FRONT SHELL HAS GROUNDING INDENTS FOR 211111-4, 211111-6, & 5-211111-4 ONLY.
 - ▲ FINISH: BRIGHT TIN PER ASTM-B-545 .000400-.000550 THK OVER COPPER PER AMS2418 .000050 MIN THK.
 - ▲ FINISH: TIN PER ASTM-B-545 .000200 MIN THK OVER COPPER PER AMS2418 .000100-.000200 THK.
 - ▲ FINISH: ZINC PLATE PER ASTM-B-633 .000200-.000400 THK WITH SUPPLEMENTARY CHROMATE (Cr3+).

▲▲▲	.120	-	5-211111-4
▲▲	.120	-	5-211111-1
▲▲	.120	-	211111-7
▲▲▲	.120	-	211111-6
▲▲	.120	B010942-0037	211111-5
▲▲▲	.120	-	211111-4
▲▲	.154	311P405-9P-B-15	211111-3
▲▲	.120	311P405-9P-B-12	211111-2
▲▲	.120	-	211111-1

THIS DRAWING IS A CONTROLLED DOCUMENT		REV	DATE	BY	CHK	APP
1	21-06-08	DF	DO			

REVISIONS	DESCRIPTION	DATE	BY	CHK	APP
1	PLUG ASSEMBLY AMPLIMITE 11C1	21-06-08	DF	DO	
2	SIZE 2, SERIES 109, COAX MIX				

REVISIONS	DESCRIPTION	DATE	BY	CHK	APP
1	CUSTOMER DRAWING	21-06-08	DF	DO	