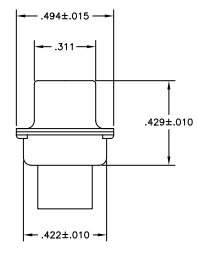
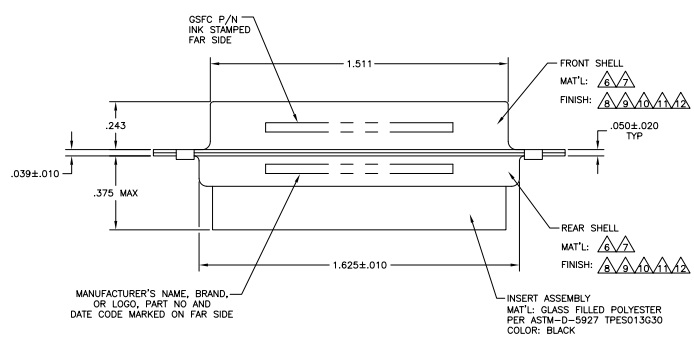
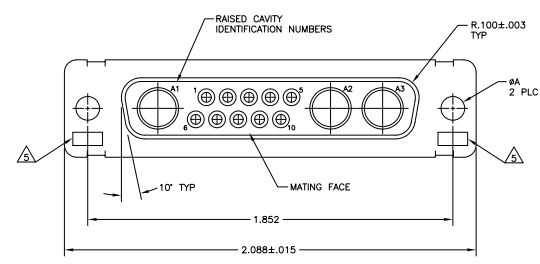


REV	DATE	DESCRIPTION	BY	CHK	APP
DF	DO				
R		REVISED PER ECO-09-012541			

- THIS RECEPTACLE WILL MATE WITH ANY 13C3, SIZE 3 PLUG IN AMPLIMITE SERIES.
  - MAXIMUM WIRE INSULATION TO BE USED WITH THIS RECEPTACLE IS #.088.
  - THIS CONNECTOR ACCEPTS (3) POWER B, OR COAX SOCKET CONTACTS IN POSITIONS A1 THRU A3, PURCHASED SEPARATELY.
  - THIS CONNECTOR ACCEPTS SIZE 20 SOCKET SIGNAL CONTACTS IN POSITIONS 1 THRU 10, PURCHASED SEPARATELY.
- UL/CSA DESIGNATION STAMPED IN THIS AREA, OPTIONAL.
- STEEL PER ASTM-A-109.
  - BRASS PER MIL-C-50 AND ASTM-B-36 UNS NO. C26000.
  - FINISH: CADMIUM PLATED PER QQ-P-416.
  - FINISH: TIN PER ASTM-B-545 .000200 MIN THK OVER COPPER PER AMS2418 .000100-.000200 THK.
  - FINISH: GOLD PLATED PER ASTM-B-488 TYPE II, GRADE C, CLASS 1 OVER COPPER PER AMS2418, CLASS IV.
  - FINISH: TIN PER ASTM-B-545 .000200 MIN THK OVER COPPER PER AMS2418 .000100-.000200 THK.
  - FINISH: ZINC PLATE PER ASTM-B-633 .000200-.000400 THK WITH SUPPLEMENTARY CHROMATE (Cr3+)



REMARKS	BA	CSFC P/N	PART NO.
6.11	.120	-	5-208811-2
6.10	.120	-	5-208811-1
7.10	.154	311P405-12S-B-15	208811-4
7.10	.120	311P405-12S-B-12	208811-3
6.9	.120	-	208811-2
6.8	.120	-	208811-1

THIS DRAWING IS A CONTROLLED DOCUMENT. TYS ELECTRONICS CORPORATION, Harrisburg, PA 17105-3608

RECEPTACLE ASSEMBLY  
AMPLIMITE 13C3  
SIZE 3, SERIES 109, COAX MIX

DATE: 007789 Q=208811

CUSTOMER DRAWING