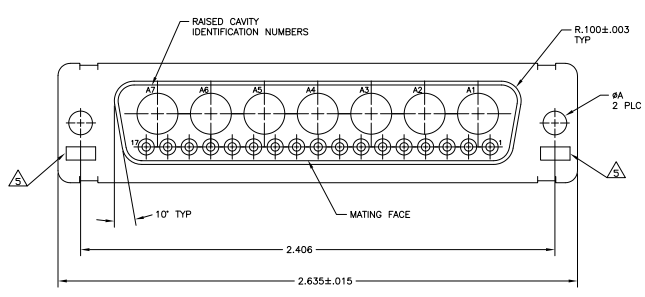
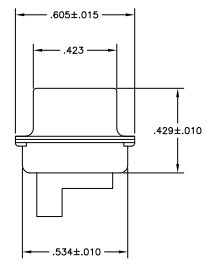
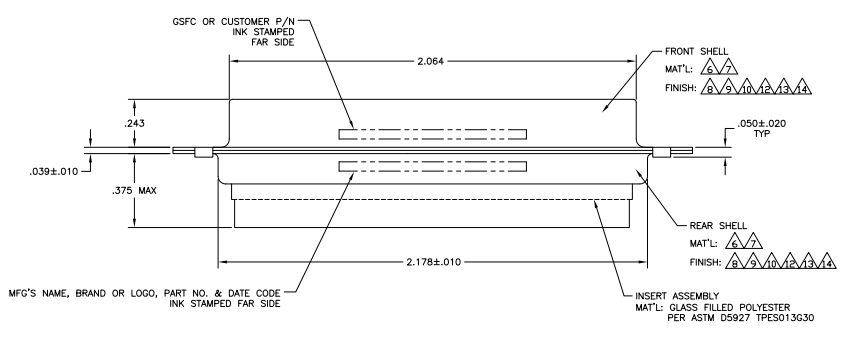


REV	DATE	DESCRIPTION	BY	CHK	APP
1	11/28/11		PY	RL	
2		REV PER ECO 11-001059			



- THIS RECEPTACLE WILL MATE WITH ANY 24C7, SIZE 5 PLUG IN AMPLIMITE SERIES.
  - MAXIMUM WIRE INSULATION TO BE USED WITH THIS RECEPTACLE IS #.068.
  - THIS CONNECTOR ACCEPTS (7) POWER B, OR COAX SOCKET CONTACTS IN POSITIONS A1 THRU A7, PURCHASED SEPARATELY.
  - THIS CONNECTOR ACCEPTS SIZE 20 SOCKET CONTACTS IN POSITIONS 1 THRU 17, PURCHASED SEPARATELY.
- △ UL/CSA DESIGNATION STAMPED IN THIS AREA, OPTIONAL.
  - △ MATERIAL: STEEL PER ASTM-A-109.
  - △ MATERIAL: BRASS PER MIL-C-50 AND ASTM-B-36 UNS NO. C26000.
  - △ FINISH: TIN PER ASTM-B-545 .000200 MIN THK OVER COPPER PER AMS2418 .000100-.000200 THK OR TIN-LEAD 93/7 .000200 MIN THK OVER COPPER PER AMS2418 .000100-.000200 THK.
  - △ FINISH: CADMIUM PLATED PER QQ-P-416.
  - △ FINISH: GOLD PER MIL-G-45204 TYPE II, GRADE C, CLASS 1 OVER COPPER PER MIL-C-14550, CLASS IV.
  - △ INK STAMP WESTINGHOUSE PART NO. 97942-645A935H03, FAR SIDE.
  - △ FINISH: TIN PER ASTM-B-545 .000200 MIN THK OVER COPPER PER AMS2418 .000100-.000200 THK.
  - △ FINISH: BRIGHT TIN PER ASTM-B-545 .000400-.000550 THK OVER COPPER PER AMS2418 .000050 MIN THK.
  - △ FINISH: ZINC PLATE PER ASTM-B-633, .000200-.000400 THK WITH SUPPLEMENTARY CHROMATE (C73+)



FINISH	THICKNESS	REMARKS	PART NO.
8-10-12-13-14	.120	-	5-208552-4
8-9-10-11-12-13-14	.120	-	5-208552-1
8-9-10-11-12-13-14	.120	T5935-0103-006	208552-7
8-9-10-11-12-13-14	.120	-	208552-6
8-9-10-11-12-13-14	.154	311P405-22S-B-15	208552-5
8-9-10-11-12-13-14	.120	-	208552-4
8-9-10-11-12-13-14	.120	97942-645A935H03	208552-3
8-9-10-11-12-13-14	.120	311P405-22S-B-12	208552-2
8-9-10-11-12-13-14	.120	-	208552-1

THIS DRAWING IS A CONTROLLED DOCUMENT.

DATE: 07-20-10  
 BY: SHELY  
 CHECKED: 07-20-10  
 DESIGNED: 07-20-10  
 DRAWN: 07-20-10  
 APPROVED: 07-20-10

Yates Electronics Corporation  
 Harrisburg, Pa 17105-3008

RECEPTACLE ASSEMBLY  
 AMPLIMITE 24C7  
 SIZE 5, COAX MIN.

SIZE: 4.1  
 SHEET: 1 OF 1  
 REV: R

CUSTOMER DRAWING  
 A100779  
 Q=208552