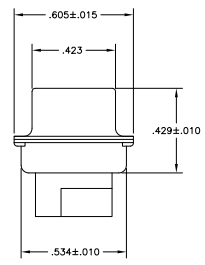
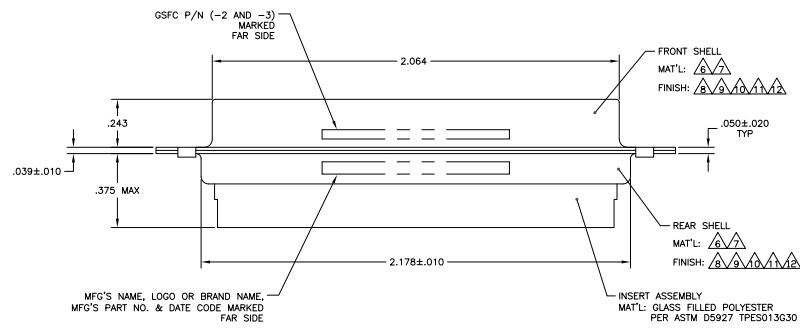


1. THIS RECEPTACLE WILL MATE WITH ANY 36C4, SIZE 5 PLUG IN AMPLIMITE SERIES.
 2. MAXIMUM WIRE INSULATION TO BE USED WITH THIS RECEPTACLE IS #.072.
 3. THIS CONNECTOR ACCEPTS (4) POWER 8, OR COAX SOCKET CONTACTS IN POSITIONS A1 THRU A4, PURCHASED SEPARATELY.
 4. THIS CONNECTOR ACCEPTS SIZE 20 SOCKET CONTACTS IN POSITIONS 1 THRU 32, PURCHASED SEPARATELY.
- ▲ UL/CSA DESIGNATION STAMPED IN THIS AREA, OPTIONAL.
 ▲ MATERIAL: STEEL PER ASTM-A-109.
 ▲ MATERIAL: BRASS PER MIL-C-50 AND ASTM-B-36 UNS NO. C26000.
 ▲ FINISH: CADMIUM PLATED PER QQ-P-416, TYPE II, CLASS 2.
 ▲ FINISH: GOLD PER MIL-G-45204 TYPE II, GRADE C, CLASS 1 OVER COPPER PER MIL-C-14550, CLASS IV.
 ▲ FINISH: TIN PER ASTM-B-545 .000200 MIN THK OVER COPPER PER AMS2418 .000100-.000200 THK.
 ▲ FINISH: TIN PER ASTM-B-545 .000200 MIN THK OVER COPPER PER AMS2418 .000100-.000200 THK.
 ▲ FINISH: ZINC PLATE PER ASTM-B-633 .000200-.000400 THK WITH SUPPLEMENTARY CHROMATE (Cr3+).



▲▲	.120	-	5-208550-4
▲▲	.120	-	5-208550-1
▲▲	.120	-	208550-4
▲▲	.154	311P405-23S-B-15	208550-3
▲▲	.120	311P405-23S-B-12	208550-2
▲▲	.120	-	208550-1

THIS DRAWING IS A CONTROLLED DOCUMENT. SHELLY 07-200-88

THIS DRAWING IS UNPUBLISHED
 REPRODUCED FOR INFORMATION
 ALL INFORMATION IS UNCLASSIFIED

Teco Electronics Corporation
 Harrisburg, PA 17105-3608

RECEPTACLE ASSEMBLY
 AMPLIMITE 36C4
 SIZE 5, COAX MIX

DATE	00778	Q=208550
CUSTOMER DRAWING	SIZE 4:1	SHEET 1 OF 1