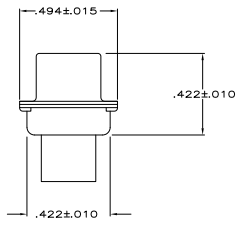


- ⚠ THIS PLUG WILL MATE WITH ANY RECEPTACLE CONNECTOR WITH THE SAME INSERT ARRANGEMENT AS DEFINED BY MS16274-1.
- 2. MAXIMUM WIRE INSULATION TO BE USED WITH THIS PLUG IS .072 [1.83] DIA.
- 3. BERYLLIUM COPPER RETENTION CLIPS (15) ARE INCLUDED IN INSERT ASSEMBLY.
- 4. CONNECTOR SUPPLIED WITHOUT CONTACTS; SHOWN FOR ILLUSTRATION ONLY.
- ⚠ THESE CONNECTORS ARE QUALIFIED TO GODDARD SPACE FLIGHT CENTER SPECIFICATION S-311-P-4.
- ⚠ UL/CSA DESIGNATION STAMPED IN THIS AREA, OPTIONAL.
- ⚠ CUSTOMER PART NUMBER MAY BE SPLIT BETWEEN FRONT AND REAR SHELL, SAME SIDE. FAR SIDE REFERS TO WIDE SIDE OF KEYSTONE, NEAR SIDE REFERS TO NARROW SIDE OF KEYSTONE.
- ⚠ RESTRICTED TO CAE ELECTRONICS ONLY.
- ⚠ CONTACTS FOR 206798-8 ARE UNASSEMBLED.

CONTACT P/N 205089-1  
 (MIL-39029/64-369)  
 (SUPPLIED WITH 206798-8 ONLY)  
 QTY = 15



	.120	570513-7	206798-9	206798-9
	.120	B41-P10009-0013	206798-8	206798-8
	.120	311P409-2P-B-12	206798-2	206798-7
	.120	122137P15P	206798-6	206798-6
OBSOLETE	.120	2A014-002V-001	206798-4	206798-4
	.154	-	206798-3	206798-3
	.120	311P409-2P-B-12	206798-2	206798-2
	.154	311P409-2P-B-15	206798-1	206798-1

REMARKS	DIA A	INK STAMPED CUSTOMER P/N	INK STAMPED ASSEMBLY NUMBER
---------	-------	--------------------------	-----------------------------

THIS DRAWING IS A CONTROLLED DOCUMENT. DATE: 12-27-88

DESIGNED BY: [ ] CHECKED BY: [ ]

DATE: 12-17-88

PLUG FOR PIN CONTACTS  
 SERIES 109, SIZE 2  
 15 POSITION

SIZE: A1 007798 (C)=206798

CUSTOMER DRAWING