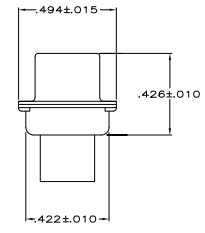
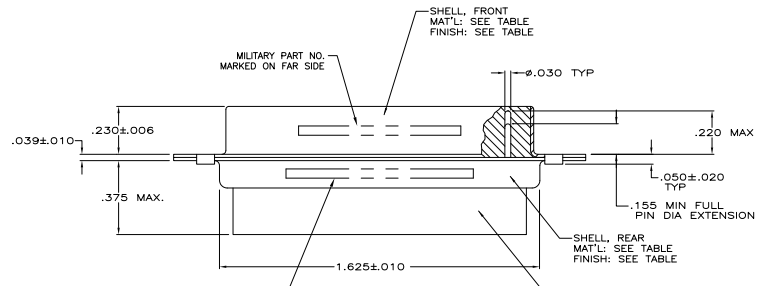
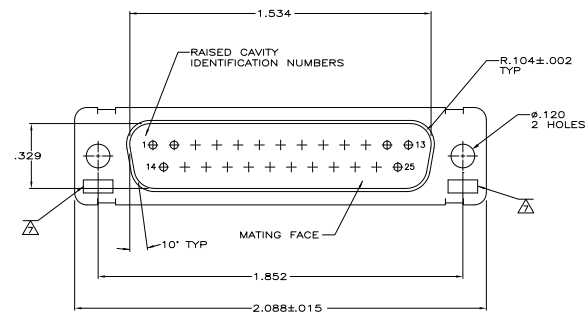


REV	DATE	DESCRIPTION	BY	APP
P1		REVISED PER EDD-11-00030	11MMR11	RK HMR

1. THIS PLUG IS DESIGNED TO CONFORM TO THE LATEST ISSUE OF MIL-C-24308.
 2. MAXIMUM WIRE INSULATION TO BE USED WITH THIS PLUG IS #.068.
 3. STAINLESS STEEL RETENTION CLIPS ARE INCLUDED IN INSERTS.
 4. PACKAGE STAMPED M-24308/4-261F.
 5. THIS PLUG WILL ACCEPT SIZE 20 PIN CONTACT M39029/64-369 OR ANY TYCO HD-20 PIN CONTACT.
- ▲ MFG'S PART NO. STAMPED ON CONNECTOR REPRESENTS KIT NUMBER WITH CONTACTS.
 ▲ UL/CSA DESIGNATION STAMPED IN THIS AREA.
 ▲ TE CONNECTIVITY, 205560-2, & DATE CODE INK STAMPED, FAR SIDE.
 ▲ TE CONNECTIVITY, 205166-4 INK STAMPED, FAR SIDE.
 ▲ FINISH: BRIGHT TIN PER ASTM-B-545 .000400-.000550 THK OVER COPPER PER AMS2418 .000050 MIN THK.
 ▲ FRONT SHELL HAS GROUNDING INDENTS, 205166-4 ONLY, (NOT SHOWN).
 ▲ M24308/4-F INK STAMPED, FAR SIDE.



MFG'S NAME, BRAND OR LOGO, MFG'S PART NO. & DATE CODE MARKED ON FAR SIDE

-	-	-	205166-5	▲	STEEL, CLASS G	205166-5
▲	-	-	205166-4	▲	STEEL, CLASS G	205166-4
-	-	-	-	-	CADMIUM PER QQ-P-416	BRASS
▲	M24308/4-261F	M24308/4-3F	205560-2	-	CADMIUM PER QQ-P-416	STEEL, CLASS G
REMARKS	MILITARY PART NO. MARKED ON PACKAGE	MILITARY PART NO. MARKED ON CONNECTOR	MFG'S PART NO. MARKED ON CONNECTOR	FINISH	SHELL MATERIAL	PART NO.

SUPSD BY 206800-2

THIS DRAWING IS A CONTROLLED DOCUMENT. (P) C. THOMAS, 10-200-87 (E) C. BALLEW, 10-200-87 (M) J. BALLEW, 10-200-87 (S) J. BALLEW, 10-200-87

TE Connectivity

AMPLUMITE PLUG FOR PIN CONTACTS
 H-DENSITY HD-20 CONNECTOR
 SIZE 3 (25 POSN) SERIES 109

DATE: 100779 Q=205166

CUSTOMER DRAWING