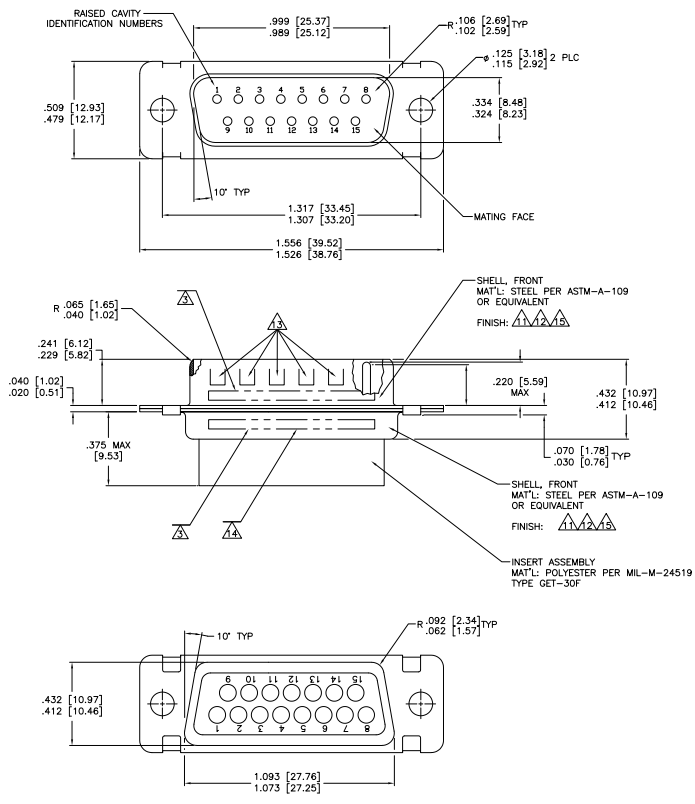


REV	DATE	DESCRIPTION	BY	CHK	APP
T1		REVISED PER EDD-11-005030	11MMR11	RK	HMR



- THIS CONNECTOR ASSEMBLY IS SUPPLIED WITH METAL CONTACT RETENTION CLIPS INSTALLED IN THE INSERT ASSEMBLY.
- THIS CONNECTOR ASSEMBLY MEETS THE REQUIREMENTS OF MIL-C-24308 AND MATES WITH ANY RECEPTACLE CONNECTOR WITH THE SAME INSERT ARRANGEMENT.
- $\Delta$  THE PART NUMBER MARKED ON THE CONNECTOR MAY DIFFER FROM THE PART NUMBER ORDERED DUE TO THE MARKING REQUIREMENTS OF MIL-C-24308/4 (PART NUMBER MARKED ON CONNECTOR REPRESENTS CONNECTOR ASSEMBLY WITH CONTACTS). MARK WITH .047 [1.19]-.062 [1.57] HIGH CHARACTERS. FAR SIDE REFERS TO THE WIDE SIDE OF THE KEYSTONE. NEAR SIDE REFERS TO THE NARROW SIDE OF THE KEYSTONE. MARKING SHALL BE LOCATED AS FOLLOWS:
  - "M24308" ON FRONT SHELL, FAR SIDE.
  - SLASH SHEET AND DASH NUMBER ON REAR SHELL, FAR SIDE.
  - "MFG'S NAME, BRAND OR LOGO" AND DATE CODE ON FRONT SHELL, NEAR SIDE.
  - MFG'S PART NUMBER ON REAR SHELL, NEAR SIDE.
- FULL PIN DIAMETER EXTENSION IS .164 [4.17] MIN. CONTACT NOT INCLUDED - SHOWN FOR DIMENSIONAL REFERENCE ONLY.
- THIS CONNECTOR ASSEMBLY IS DESIGNED TO ACCEPT SIZE 20 CRIMP TYPE PIN CONTACT MILITARY PART NUMBER M39029/64-369 (MFG'S PART NUMBER 205089-1). FOR ALTERNATE CONTACT OPTIONS CONSULT THE CONNECTIVITY CATALOG.
- MAXIMUM WIRE INSULATION TO BE USED WITH THIS CONNECTOR ASSEMBLY IS .072 [1.83] DIAMETER.
- FOR CONTACT CRIMPING INSTRUCTION SHEET REFER TO THE CONNECTIVITY IS 7516. FOR CONTACT INSTALLATION AND REMOVAL INSTRUCTION SHEET REFER TO THE CONNECTIVITY IS 7509.
- $\Delta$  PART NUMBER FOR ORDERING.
- DIMENSIONS AND TOLERANCES PER ANSI Y14.5M-1982.
- THIS DRAWING SHALL BE INTERPRETED IN ACCORDANCE WITH APPLICABLE STANDARDS LISTED IN MIL-STD-100.
- $\Delta$  FINISH: CADMIUM PER QQ-P-416, TYPE II, CLASS 2 OVER COPPER PER AMS2418, CLASS 4
- $\Delta$  FINISH: TIN PER ASTM-B-545, .000200 [0.0051] MIN THK OVER COPPER PER AMS2418, .000050 [0.00127] MIN THK.
- $\Delta$  FRONT SHELL HAS GROUNDING INDENTS ON 205164-4 & -5 ONLY.
- $\Delta$  MARK .047-.062 HIGH PER 115-10002-2. FAR SIDE REFERS TO WIDE SIDE OF KEYSTONE. MARKING SHALL BE AS FOLLOWS:
  - MFG'S PART NUMBER AND DATE CODE ON REAR SHELL, FAR SIDE.
  - FINISH: BRIGHT TIN PER ASTM-B-545, .000400-.000550 THK OVER COPPER PER AMS2418, .000050 MIN THK.

REMARKS	NO OF POSN	SHELL SIZE	PACKAGE MILITARY P/N	M24308/4-260F	M24308/4-2F	MFG'S P/N ON CONNECTOR	MFG'S P/N ON CONNECTOR	PART NUMBER
$\Delta\Delta\Delta\Delta\Delta$	15	2	-	-	-	205164-6	205164-6	
$\Delta\Delta\Delta\Delta\Delta$	15	2	-	-	-	205164-5	205164-5	
$\Delta\Delta\Delta\Delta\Delta$	15	2	-	-	-	205164-4	205164-4	
SUPSD. BY 205288-1	$\Delta$	15	2	-	-	205164-3	205164-3	
SUPSD. BY 206798-2	$\Delta$	15	2	-	-	205558-4	205164-2	
$\Delta$	15	2	M24308/4-260F	M24308/4-2F	205558-2	205164-1		

THIS DRAWING IS A CONTROLLED DOCUMENT

INCHES:  FRACTIONS:  DECIMALS:  ANGLES:  DIMENSIONS:  TOLERANCES:  UNLESS OTHERWISE SPECIFIED

DATE: 10/07/79

SIZE: 4.1

REV: 1

BY: T1

TE Connectivity

AMPLIMITE PLUG ASSY WITHOUT SIZE 20 CRIMP TYPE PIN CONTACTS SERIES 100, SHELL SIZE 2

007799

205164

CUSTOMER DRAWING