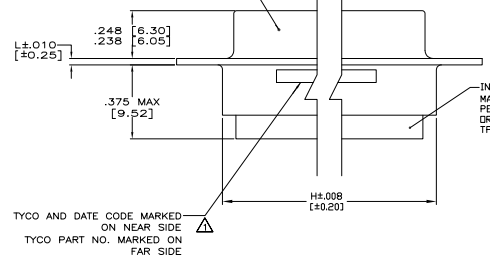
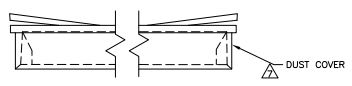
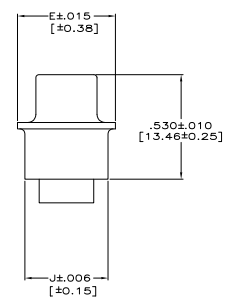


SHELL:
 MAT'L: ALUMINUM ALLOY, TEMPER T-6
 PER ASTM-B-211 OR QQ-A-2215/8
 FINISH: PLATED GOLD PER MIL-G-45204,
 OVER NICKEL PER MIL-C-26074



INSERT ASSEMBLY
 MAT'L: POLYPHENYLENE SULFIDE (PPS)
 PER MIL-M-24519, TYPE GST-40F
 OR GLASS FILLED POLYESTER
 TPE5013G30 PER ASTM D5927



- 1. MARKED WITH .047 [1.19] HIGH CHARACTERS. FAR SIDE REFERS TO WIDE SIDE OF KEYSTONE. NEAR SIDE REFERS TO NARROW SIDE OF KEYSTONE.
- 2. UNLESS OTHERWISE STATED THIS ASSEMBLY CONFORMS TO MIL-PRF-24308.
- 3. BERYLLIUM COPPER RETENTION CLIPS ARE INCLUDED IN INSERTS.
- 4. CONTACTS NOT SUPPLIED, MUST BE ORDERED SEPARATELY. WILL ACCOMMODATE A SIZE 22 SOCKET CONTACT PER MIL-C-39029/57-354 OR NASA C-08-51. CONTACT TYCO ENGINEERING FOR ANY OTHER CONTACT STYLES.
- 5. THIS RECEPTACLE WILL MATE WITH ANY PLUG CONNECTOR WITH THE SAME INSERT ARRANGEMENT.
- 6. MAXIMUM WIRE INSULATION USED WITH THIS CONNECTOR IS .068 [1.73] DIAMETER.

.039	.608	2.313	.668	.485	2.500	2.190	2.729	104	6	1883008-6
[0.99]	[15.44]	[58.75]	[16.97]	[12.32]	[63.50]	[55.63]	[69.32]			
.039	.550	2.189	.605	.423	2.406	2.065	2.635	78	5	1883008-5
[0.99]	[13.97]	[55.60]	[15.38]	[10.74]	[61.11]	[52.45]	[66.93]			
.039	.438	2.284	.494	.311	2.500	2.160	2.729	62	4	1883008-4
[0.99]	[11.13]	[58.01]	[12.55]	[7.90]	[63.50]	[54.86]	[69.32]			
.039	.438	1.636	.494	.311	1.852	1.512	2.088	44	3	1883008-3
[0.99]	[11.13]	[41.55]	[12.55]	[7.90]	[47.04]	[38.40]	[53.04]			
.030	.438	1.094	.494	.311	1.312	.972	1.541	26	2	1883008-2
[0.76]	[11.13]	[27.79]	[12.55]	[7.90]	[33.32]	[24.69]	[39.14]			
.030	.438	.770	.494	.311	.984	.644	1.213	15	1	1883008-1
[0.76]	[11.13]	[19.56]	[12.55]	[7.90]	[24.99]	[16.36]	[30.81]			
L	J	H	E	D	C	B	A	NO OF POSN.	SHELL SIZE	PART NUMBER

△ A DUST COVER IS ASSEMBLED ON EACH CONNECTOR.

THIS DRAWING IS A CONTROLLED DOCUMENT. AMP Inc. 17100-3608

REVISIONS: RECEPTACLE ASSEMBLY, AMP/LITE ULTRA-LITE-SERIES 90SIZE 1 THRU 6 ONE PIECE SHELL WITH 154 MOUNTING HOLES

CUSTOMER DRAWING: A100779G=1883008