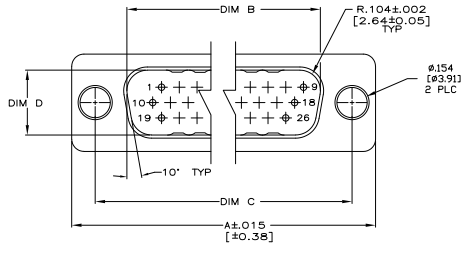
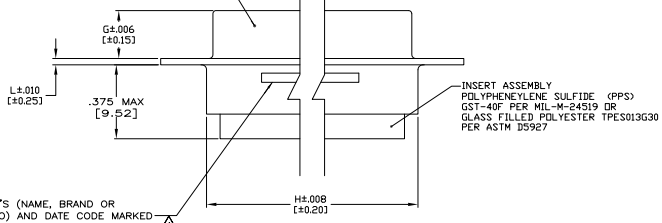


REV	DATE	DESCRIPTION	BY	CHK	APP
DF	DO				
E1		REVISED PER EDD-11-005030		11MM11	RK HMR



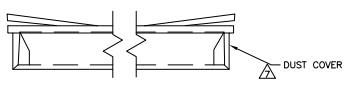
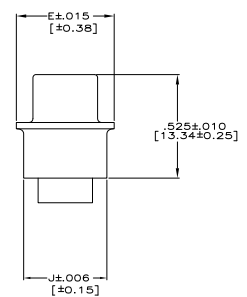
- △ MARKED WITH .047 [1.19] HIGH CHARACTERS.
 FAR SIDE REFERS TO WIDE SIDE OF KEYSTONE.
 NEAR SIDE REFERS TO NARROW SIDE OF KEYSTONE.
- 2. UNLESS OTHERWISE STATED THIS ASSEMBLY CONFORMS TO MIL-PRF-24308.
- 3. BERYLLIUM COPPER RETENTION CLIPS ARE INCLUDED IN INSERTS.
- 4. CONTACTS NOT SUPPLIED, MUST BE ORDERED SEPARATELY.
 WILL ACCOMMODATE A SIZE 22 PIN CONTACT PER MIL-C-39029/58-360
 OR NASA G-08-P1 CONTACT TE ENGINEERING FOR ANY OTHER CONTACT STYLES.
- 5. THIS PLUG WILL MATE WITH ANY RECEPTACLE CONNECTOR WITH
 THE SAME INSERT ARRANGEMENT.
- 6. MAXIMUM WIRE INSULATION USED WITH THIS CONNECTOR WITH
 IS .068 [1.73] DIAMETER
- △ A DUST COVER IS ASSEMBLED ON EACH CONNECTOR.

SHELL:
 MAT'L: ALUMINUM ALLOY, TEMPER T-6
 PER ASTM-B-211 OR QQ-A-2215/B
 FINISH: PLATED GOLD PER MIL-C-45204,
 OVER NICKEL PER MIL-C-26074



INSERT ASSEMBLY
 POLYPHENYLENE SULFIDE (PPS)
 GST-40F PER MIL-W-24519 OR
 GLASS FILLED POLYESTER TPES013G30
 PER ASTM D5927

MFG'S (NAME, BRAND OR
 LOGO) AND DATE CODE MARKED
 ON NEAR SIDE
 MFG'S PART NO. MARKED ON
 FAR SIDE



.039	.608	2.313	.230	.668	.503	2.500	2.212	2.729	104	6	1883007-6
[0.99]	[15.44]	[59.75]	[5.94]	[16.97]	[12.78]	[63.50]	[56.18]	[69.32]			
.039	.550	2.189	.230	.605	.441	2.406	2.079	2.635	78	5	1883007-5
[0.99]	[13.97]	[55.60]	[5.84]	[15.38]	[11.20]	[61.11]	[52.81]	[66.93]			
.039	.438	2.284	.230	.494	.329	2.500	2.182	2.729	62	4	1883007-4
[0.99]	[11.13]	[58.01]	[5.84]	[12.55]	[8.36]	[63.50]	[55.42]	[69.32]			
.039	.438	1.636	.230	.494	.329	1.852	1.534	2.088	44	3	1883007-3
[0.99]	[11.13]	[41.55]	[5.84]	[12.55]	[8.36]	[47.04]	[38.96]	[53.04]			
.030	.438	1.094	.235	.494	.329	1.312	.994	1.541	26	2	1883007-2
[0.76]	[11.13]	[27.79]	[5.97]	[12.55]	[8.36]	[33.32]	[25.25]	[39.14]			
.030	.438	.770	.235	.494	.329	.984	.666	1.213	15	1	1883007-1
[0.76]	[11.13]	[19.56]	[5.97]	[12.55]	[8.36]	[24.99]	[16.92]	[30.81]			
L	J	H	G	E	D	C	B	A	NO OF POSN.	SHELL SIZE	PART NUMBER

THIS DRAWING IS A CONTROLLED DOCUMENT. (P) C. THOMAS (P) J. MILLER (P) J. MILLER

TE Connectivity

PLUG ASSEMBLY, AMP/LITE
 ULTRA-LITE SERIES 90/SIZE 1 THRU 6
 WITH 154 MOUNTING HOLES

DATE: 00779 G=1883007

CUSTOMER DRAWING