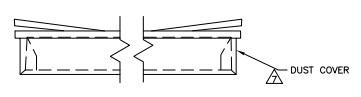
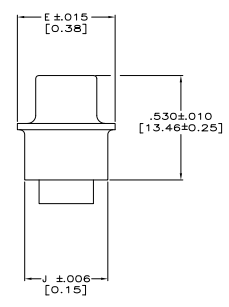
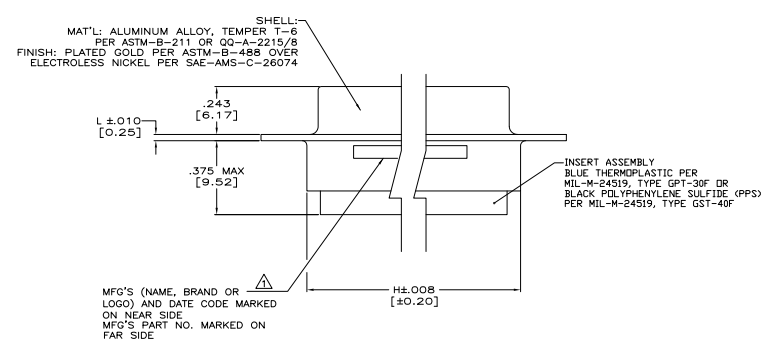
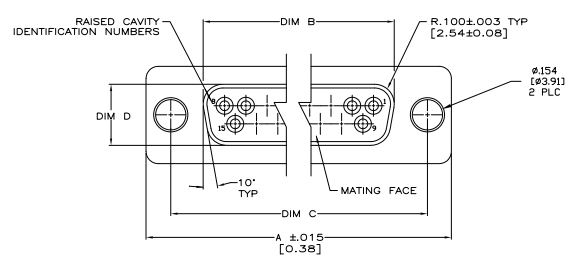


REV	DATE	DESCRIPTION	BY	CHK	APP
C	REV PER ECO 06-14710		E-27-06	CT	DM
D	REV PER ECO 08-016762		8-21-08	PK	BW



	.039	.550	2.189	.605	.423	2.406	2.064	2.635	50	5	1883006-5
	[0.99]	[13.97]	[55.60]	[15.38]	[10.74]	[61.11]	[52.43]	[66.93]			
	.039	.438	2.284	.494	.311	2.500	2.159	2.729	37	4	1883006-4
	[0.99]	[11.13]	[58.01]	[12.55]	[7.90]	[63.50]	[54.84]	[69.32]			
	.039	.438	1.636	.494	.311	1.852	1.511	2.088	25	3	1883006-3
	[0.99]	[11.13]	[41.55]	[12.55]	[7.90]	[47.04]	[38.38]	[53.04]			
	.030	.438	1.094	.494	.311	1.312	.971	1.541	15	2	1883006-2
	[0.76]	[11.13]	[27.79]	[12.55]	[7.90]	[33.32]	[24.66]	[39.14]			
	.030	.438	.770	.494	.311	.984	.643	1.213	9	1	1883006-1
	[0.76]	[11.13]	[19.56]	[12.55]	[7.90]	[24.99]	[16.33]	[30.81]			
	L	J	H	E	D	C	B	A	NO OF POSN.	SHELL SIZE	PART NUMBER

THIS DRAWING IS A CONTROLLED DOCUMENT. (P) C. THOMAS E-31-38  
 DIMENSIONS: INCHES (MILLIMETERS)  
 UNLESS OTHERWISE SPECIFIED: DIMENSIONS ARE IN INCHES AND DECIMALS THEREOF.  
 FINISHES: UNLESS OTHERWISE SPECIFIED: ALL DIMENSIONS ARE TO BE HONED TO THE CLOSEST TOLERANCE PER MIL-STD-153.  
 MATERIALS: UNLESS OTHERWISE SPECIFIED: ALL DIMENSIONS ARE TO BE HONED TO THE CLOSEST TOLERANCE PER MIL-STD-153.  
 TOLERANCES: UNLESS OTHERWISE SPECIFIED: ALL DIMENSIONS ARE TO BE HONED TO THE CLOSEST TOLERANCE PER MIL-STD-153.  
 CUSTOMER DRAWING: 100779G-1883006  
 DATE: 4.1  
 REV: 1  
 BY: D

**AMP** Tyco Electronics Corporation  
 Harrisburg, PA 17105-3608

RECEPTACLE ASSEMBLY, AMP/LITE  
 ULTRA-LITE, SERIES 100, SIZE 1 THRU 5 WITH  
 .154 MOUNTING HOLES (ONE PIECE ALUMINUM SHELL)