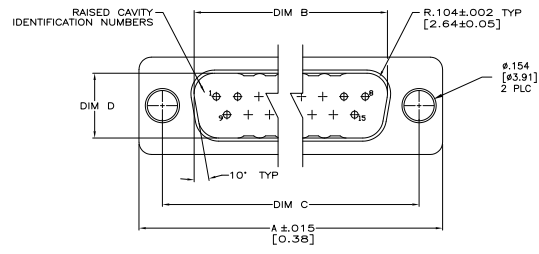
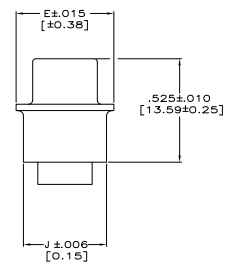
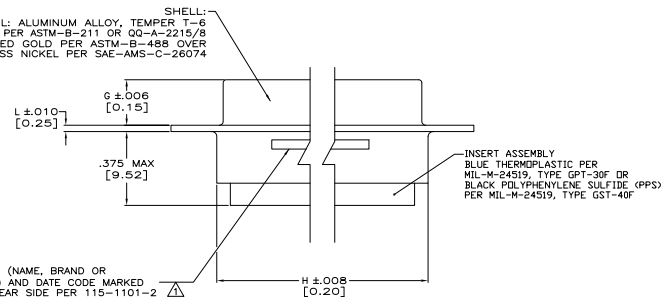


REV	DATE	DESCRIPTION	BY	CHK	APP
C	REV PER ECD 06-14710		E-27-06	CT	DM
D	REV PER ECD-08-018752		8-21-08	PK	BW

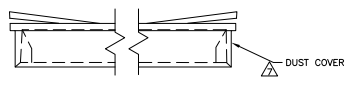


- 1. MARKED WITH .047 [1.19] HIGH CHARACTERS. FAR SIDE REFERS TO WIDE SIDE OF KEYSTONE. NEAR SIDE REFERS TO NARROW SIDE OF KEYSTONE.
 - 2. UNLESS OTHERWISE STATED THIS ASSEMBLY CONFORMS TO MIL-PRF-24308.
 - 3. BERYLLIUM COPPER RETENTION CLIPS ARE INCLUDED IN INSERTS.
 - 4. CONTACTS NOT SUPPLIED, MUST BE ORDERED SEPARATELY. WILL ACCOMMODATE A SIZE 20 PIN CONTACT PER MIL-C-39029/64-369 OR NASA G-10-P1. CONTACT TE ENGINEERING FOR ANY OTHER CONTACT STYLES.
 - 5. THIS PLUG WILL MATE WITH ANY RECEPTACLE CONNECTOR WITH THE SAME INSERT ARRANGEMENT.
 - 6. MAXIMUM WIRE INSULATION USED WITH THIS CONNECTOR IS .084 [2.13] DIAMETER.
- ▲ A DUST COVER IS ASSEMBLED ON EACH CONNECTOR.

MAT'L: ALUMINUM ALLOY, TEMPER T-6 PER ASTM-B-211 OR QQ-A-2215/8
 FINISH: PLATED GOLD PER ASTM-B-488 OVER ELECTROLESS NICKEL PER SAE-AMS-C-26074



MFG'S (NAME, BRAND OR LOGO) AND DATE CODE MARKED ON NEAR SIDE PER 115-1101-2
 MFG'S PART NO. MARKED ON FAR SIDE PER 115-1101-2



.039 [0.99]	.550 [13.97]	2.189 [55.60]	.230 [5.84]	.605 [15.38]	.441 [11.20]	2.406 [61.11]	2.079 [52.81]	2.635 [66.93]	50	5	1883005-5
.039 [0.99]	.438 [11.13]	2.284 [58.01]	.230 [5.84]	.494 [12.55]	.329 [8.36]	2.500 [63.50]	2.182 [55.42]	2.729 [69.32]	37	4	1883005-4
.039 [0.99]	.438 [11.13]	1.636 [41.55]	.230 [5.84]	.494 [12.55]	.329 [8.36]	1.852 [47.04]	1.534 [38.96]	2.088 [53.04]	25	3	1883005-3
.030 [0.76]	.438 [11.13]	1.094 [27.79]	.235 [5.97]	.494 [12.55]	.329 [8.36]	1.312 [33.32]	.994 [25.25]	1.541 [39.14]	15	2	1883005-2
.030 [0.76]	.438 [11.13]	.770 [19.56]	.235 [5.97]	.494 [12.55]	.329 [8.36]	.984 [24.99]	.666 [16.92]	1.213 [30.81]	9	1	1883005-1
L	J	H	G	E	D	C	B	A	NO OF POSN.	SHELL SIZE	PART NUMBER

THIS DRAWING IS A CONTROLLED DOCUMENT. (P) C. THOMAS E-31-08
 (S) MILLER E-31-08
 (M) MILLER E-31-08
 (D) MILLER E-31-08
 (C) MILLER E-31-08
 (A) MILLER E-31-08
 (R) MILLER E-31-08
 (I) MILLER E-31-08
 (O) MILLER E-31-08
 (N) MILLER E-31-08
 (B) MILLER E-31-08
 (K) MILLER E-31-08
 (L) MILLER E-31-08
 (J) MILLER E-31-08
 (H) MILLER E-31-08
 (G) MILLER E-31-08
 (F) MILLER E-31-08
 (E) MILLER E-31-08
 (D) MILLER E-31-08
 (C) MILLER E-31-08
 (B) MILLER E-31-08
 (A) MILLER E-31-08

Yeco Electronics Corporation
 Harrisburg, PA 17105-3608

PLUG ASSEMBLY, AMPLIMITE
 ULTRA-LITE SERIES 108, SIZE 1 THRU 5 WITH
 .154 MOUNTING HOLES (ONE PIECE ALUMINUM SHELL)

SIZE ONE SIZE (DRAWING NO)
 A1 00779 G-1883005

CUSTOMER DRAWING