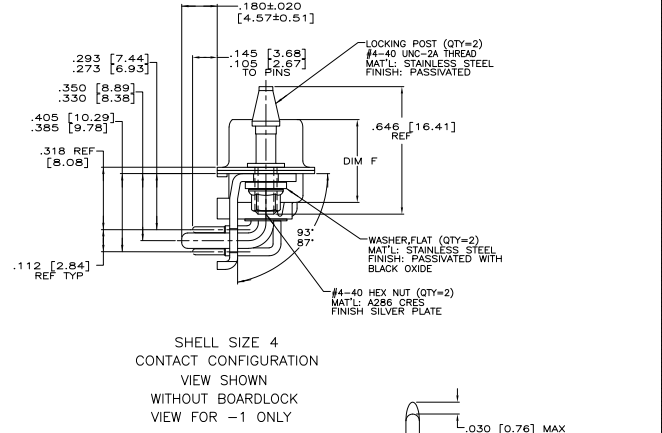
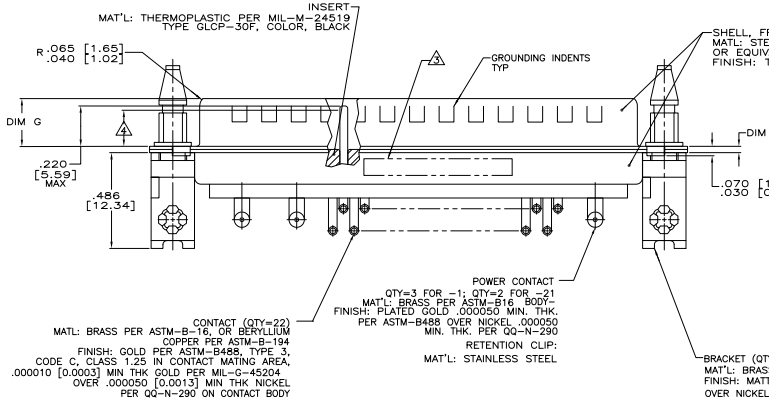
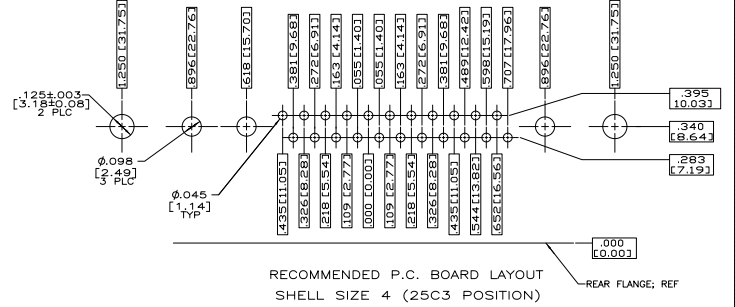
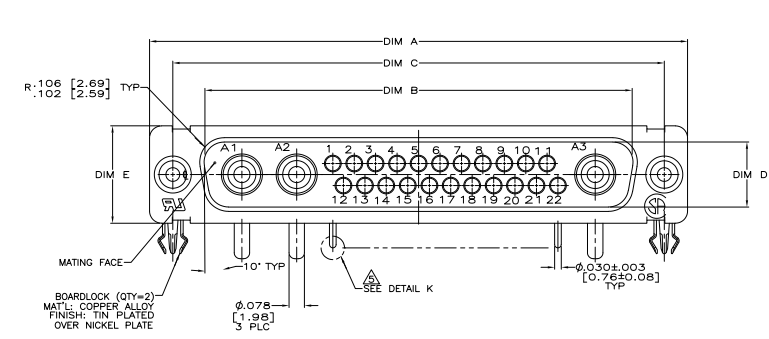


THIS DRAWING IS UNPUBLISHED
 REVISIONS FOR PRODUCTION
 BY THE ELECTRONICS CORPORATION ALL INFORMATION BEING FURNISHED

REV	DATE	DESCRIPTION	BY	CHK	APP
E	REV PER ECO 08-026286				



- TRUE POSITION TOLERANCE FOR P.C. BOARD LAYOUT IS .010 [0.25] AT MAX MATERIAL CONDITION, SUGGESTED BOARD THICKNESS IS .077±.005 [1.96±0.13].
- THE CONNECTOR DESCRIBED IN THIS DOCUMENT WILL MATE WITH ANY RECEPTACLE CONNECTOR WITH THE SAME INSERT ARRANGEMENT.
- MARKED WITH .047 [1.19]-.062 [1.57] HIGH CHARACTERS. FAR SIDE REFERS TO THE WIDE SIDE OF THE KEYSTONE. NEAR SIDE REFERS TO THE NARROW SIDE OF THE KEYSTONE. MARKED AS FOLLOWS:
 MANUFACTURER'S NAME, LOGO OR BRAND NAME, PART NO. AND DATE CODE ON REAR SHELL, FAR SIDE
- REQUIREMENT FOR FULL PIN DIAMETER EXTENSION:
 .159 [4.04] MIN FOR SHELL SIZE 1
- POWER & SIGNAL CONTACTS ARE SOLDER DIPPED WITH SnPb 63/37 TO MEET THE REQUIREMENTS OF MIL-STD-202, METHOD 208.

PRELIMINARY NOT RELEASED FOR PRODUCTION

DETAIL K
 SCALE 8:1
 TYP

DIM L	DIM G	DIM F	DIM E	DIM D	DIM C	DIM B	DIM A	NO OF PINS	SHELL SIZE	AMP PART NO.
.049 [1.24]	.236 [5.99]	.436 [11.07]	.509 [12.93]	.334 [8.48]	2.505 [63.63]	2.187 [55.55]	2.744 [69.70]	25C3	4	2-1218611-1
.029 [0.74]	.224 [5.69]	.416 [10.57]	.479 [12.17]	.324 [8.23]	2.495 [63.37]	2.177 [55.30]	2.714 [68.94]	25C3	4	1218611-1
.049 [1.24]	.236 [5.99]	.436 [11.07]	.509 [12.93]	.334 [8.48]	2.505 [63.63]	2.187 [55.55]	2.744 [69.70]			
.029 [0.74]	.224 [5.69]	.416 [10.57]	.479 [12.17]	.324 [8.23]	2.495 [63.37]	2.177 [55.30]	2.714 [68.94]			

THIS DRAWING IS A CONTROLLED DOCUMENT. DATE: 11-18-00

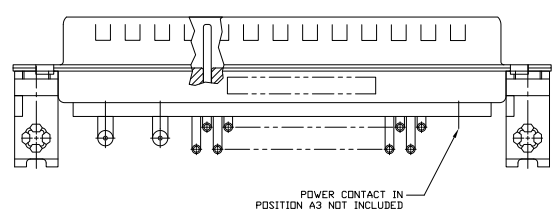
DESIGNED BY: J. THOMAS
 CHECKED BY: J. THOMAS
 DRAWN BY: J. THOMAS
 APPROVED BY: J. THOMAS

REVISIONS: 1. PLUG ASSEMBLY, MITE 25C3, RIGHT ANGLE SERIES 109 WITH ONE PIECE INSERT

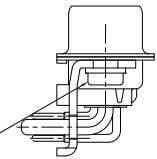
DATE: 11-18-00
 DRAWN BY: J. THOMAS
 CHECKED BY: J. THOMAS
 APPROVED BY: J. THOMAS

CUSTOMER DRAWING: A1 00779 G=1218611

DATE: 11-18-00
 DRAWN BY: J. THOMAS
 CHECKED BY: J. THOMAS
 APPROVED BY: J. THOMAS



CLINCH NUTS 4-40 UNC-
 MAT'L. STEEL PER ASTM A 109
 FINISH: CLEAR CHROMATE OVER ZINC



SHELL SIZE 4
 CONTACT CONFIGURATION
 VIEW SHOWN
 WITHOUT BOARDLOCK
 VIEW FOR 2--1 ONLY

VIEW FOR 2-1218611-1 ONLY
 SAME AS -1 EXCEPT AS SHOWN

PRELIMINARY NOT RELEASED FOR PRODUCTION

THIS DRAWING IS A CONTROLLED DOCUMENT.		DATE: 11-30-03		TFC ELECTRONICS CORPORATION Harrisburg, PA 17105-2608	
DRAWN BY: J. MILLER		DATE: 11-30-03		PLUG ASSEMBLY, AMP/UMTE, 25C3, RIGHT ANGLE SERIES 109 WITH ONE PIECE INSERT	
CHECKED BY: J. MILLER		DATE: 11-30-03		SIZE: A1	
APPROVED BY: J. MILLER		DATE: 11-30-03		DRAWING NO: 1218611	
DATE: 11-30-03		DATE: 11-30-03		REVISED TO: 2	
SEE CALLOUTS		SEE CALLOUTS		CUSTOMER DRAWING	