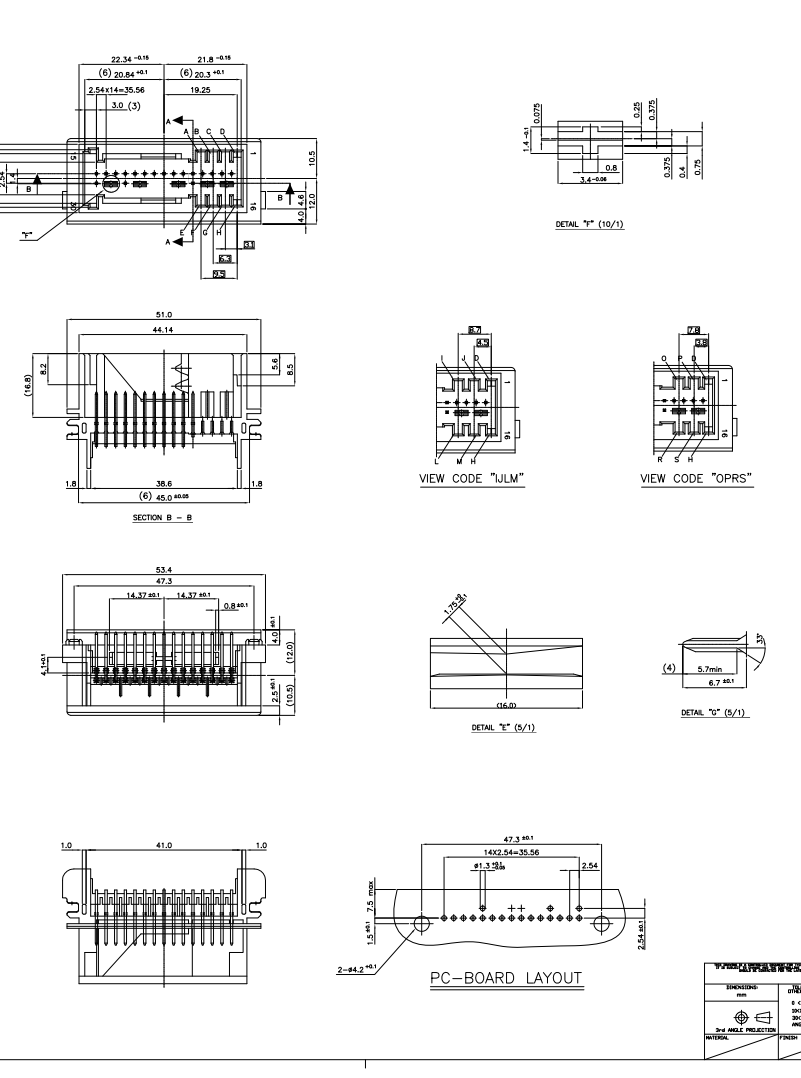
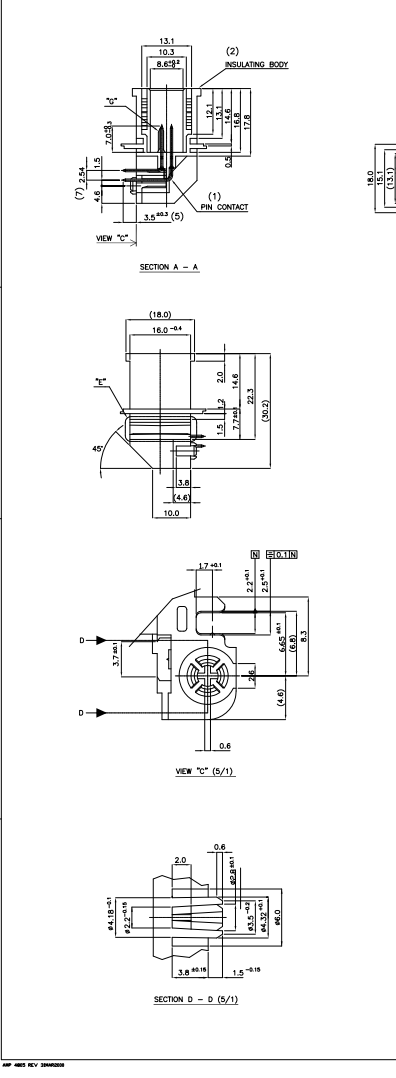


THE DRAWING IS UNCLASSIFIED
 UNLESS OTHERWISE SPECIFIED
 © COPYRIGHT BY TYCO ELECTRONICS CORPORATION. ALL RIGHTS RESERVED.

REV	DATE	DESCRIPTION	BY	CHK	APPV
1					
2					
3					
4					
5					
6					
7					
8					



REV	DATE	DESCRIPTION	BY	CHK	APPV
R		REVISED(PC00-0055-02)	DAJAE, YG	MS	CS
S		REVISED(PC00-0053-03)	YJ, JAE, YG	MS	CS
T		REVISED(PC00-0091-03)	YJ, JAE, YG	YD	CS
U		REVISED(PC00-0047-04)	YJ, JAE, YG	YD	CS
V		REVISED(PC00-0250-04)	YJ, JAE, YG	YD	CS
W		REVISED(ECR-06-004472)	YJ, JAE, YG	SH	JK
W1		REVISED(ECR-06-024182)	YJ, JAE, YG	BH	JK
AA		REVISED(ECR-07-005767)	YJ, JAE, YG	BH	JK
AB		REVISED(ECR-08-000372)	YJ, JAE, YG	SH	HG

(1) 호외차지 : 0.05
 1) 용재료: CuS66
 2) 용접재료: 납/무연납: 0.8um Au, 용접도금층: Ni 3um
 V: 납/무연납: 1-4um Sn/Plating, 용접도금층: 2.1um Ni
 V-Tin: 2.0-4.0um Pre-Tin Plated, 용접도금층: 1.27-2.2um Ni Plating
 3) 검사방법: 용접부: 가시광, 용접부: X선
 4) TE 규격: 108-010078 리드 형상 요구 사항
 + 간격: 100um, 단면: 0.3mm, 단면: 0.3mm
 + 코어: 0.3mm, 단면: 0.3mm
 + 도판: 0.3mm, 단면: 0.3mm
 + 도판: 카드뮴 사용불가능(50 ppm)
 (2) 절연체
 1) 용재료: PBT-30GF (VALOX 420-100)
 2) COLOR: 도장 없음
 3) 검사방법: 용접: 용접부: 가시광, 용접부: 25% X선 검사
 (3) KQI: 용접: 용접부: 가시광, 용접부: 25% X선 검사
 (4) 용접부: 용접부: 가시광
 (5) 납땀 부위
 (6) 용접: Center Line가 표시된 용접 부위
 (7) 용접: 용접부: 1.3mm, 용접부: 1.3mm (PC-BOARD LAT OUT 참조)

NOTES
 (1) PIN CONTACT : 0.053
 1) MATERIAL : CuS66
 2) FINISH : MATING AREA : > 0.8um Au, UNDER 3um Ni
 (2) SOLDERING AREA : 2-4um Sn/Plating, UNDER < 2.1um Ni
 (3) TIN : 2.0-4.0um Pre-Tin Plated Over 1.27-2.2um Ni Plating
 (DETECTION AS SEPARATE OPERATION)
 * >25N bei V=100mm/min, AFTER SOLDERING STRESS
 * >40N bei V=100mm/min, ACCORDING TO V8-NORM 80101
 4) ENVIRONMENTAL REQUIREMENTS ACCORDING TO TE SPEC 108-61007
 * ALL 18 KEYS REALIZABLE THROUGH INSERTS
 * NO KOSHER-EFFECT BY ASSEMBLY FORCE < 50N
 * DRAWING KEY IS (D=H)
 * FREE OF LOOSE METAL PARTS
 * PIN CONNECTOR ; FREE OF GDM/UK (< 50ppm)
 (2) INSULATING BODY
 1) MATERIAL : PBT-30GF(VALOX 420-100)
 2) COLOR : CONSULT THE DRAWING
 3) ALLOWED RECYCLED MATERIAL MAX 25%
 (3) IN THE AREA OF KOSHER FREE SPACE THERE IS UP TO +0.2 PERMISSIBLE
 (4) MATING AREA
 (5) SOLDERING AREA
 (6) MEASURED TO THE CENTER LINE OF THE INSULATING BODY
 (7) CONNECTIONS SUITABLE FOR HOLE DIAMETER 1.3, SEE PC-BOARD LAYOUT

INTEGRAL	FINISH	SCALE	2/1	REV	1	BY	AB
CUSTOMER DRAWING							

Tyco Electronics
 Kyonggi, Korea

AIR BAG 30P HEADER CAP HOUSING ASSY

DATE: 11/08/79
 DRAWING NO: 85188
 RETRIEVED BY: []

P/N	CODING	C O L O R	SUBJECT NO.	APPLICATION
2-85188-9	K - M	ORANGE BROWN (RAL 8033)	3720101538	ED2(D+P+2PT)
2-85188-8	L - M	WHITE ALUMINIUM (RAL 9006)	3720101537	ED2(D+2PT)
2-85188-7	K - L	GREEN (RAL 6002)	3720101536	R099(D+P+2PT)
2-85188-6	I - M	CLARET VIOLET (RAL 4004)	E3720101328A	X30(+P)
2-85188-5	I - L	LUMINOUS ORANGE (RAL 2005)	E3720101327A	X30()
2-85188-4	J - N	YELLOW ORANGE (RAL 2000)	3720101535	R099(D+2PT)
2-85188-3	J - M	TRAFFIC BLUE (RAL 5017)	3720101531	ET(D+P)
2-85188-2	J - L	BEIGE GREY (RAL 7012)	E3720101328A	M(D+P)
2-85188-1	I - N	KHAKI GREY (RAL 7009)	E3720101325A	M(D)
1-85188-9	I - J	LUMINOUS YELLOW (RAL 1026)	3720101534	ET(D)
1-85188-8	J - K	TURQUOISE GREEN (RAL 6016)	3720101533	D52(D+P)
1-85188-7	I - K	PASTEL GREEN (RAL 6019)	3720101532	D52(D)
1-85188-6	A - C	ROSE (RAL 3017)	E6304000 502A	X30(+P)
1-85188-5	A - G	GRAY WHITE (RAL 9002)	E6304000 501A	X30()
1-85188-1	E - G	PINK (RAL 4003)	E6304000 101A	X30()
85188-9	C - E	PINK (RAL 4003)	659339 76.54	
85188-8	A - D	LIGHT GRAY (RAL 7035)	605339 76.50	
85188-7	A - D	LIGHT GRAY (RAL 7035)	E630400 800A	M2
85188-6	C - F	GREEN (RAL 6002)	E630400 800A	X30(+P) - CHINA
85188-5	C - H	TRAFFIC YELLOW (RAL 1023)	E630400 800A	X30() - CHINA
85188-4	B - H	CLAY BROWN (RAL 8033)	E630400 400A	LX2(D+P+PT)
85188-3	D - G	SIGNAL GREEN (RAL 6032)	E630400 300A	LX2(+P)
85188-2	B - G	CURRY YELLOW (RAL 1027)	E630400 200A	H-1(D+P)
85188-1	D - E	TURQUOISE BLUE (RAL 5016)	E630400 100A	H-1(D)

P/N	CODING	C O L O R	SUBJECT NO.	APPLICATION
6-85188-5	D - G	BROWN BEIGE (RAL 1011)	3720102025	CA 6360 2F(D+P)
6-85188-4	O - F	WINE RED (RAL 3005)	3720102024	HFJ K360 1F(D)
6-85188-3	O - E	PIGEON BLUE (RAL 5014)	3720102002	MC-KINDW) EC 4F(D+P+2PT)
6-85188-2	D - M	TRAFFIC PURPLE (RAL 4006)	3720102001	MC-KINDW) EC 3F(D+2PT)
6-85188-1	D - L	PASTEL ORANGE (RAL 2003)	3720102000	MC-KINDW) STD 4F(D+P+2PT)
5-85188-9	J - G	GREEN BEIGE (RAL 1000)	3720101999	MC-KINDW) STD 3F(D+2PT)
5-85188-8	J - F	LIGHT MORY (RAL 1015)	3720101952	A1(D+P)
5-85188-7	J - E	ULTRAMARINE BLUE (RAL 5002)	3720101951	M2(D+P) F/L
5-85188-6	I - G	NUT BROWN (RAL 8011)	3720101950	M2(D) F/L
5-85188-5	I - F	LIGHT BLUE (RAL 5012)	3720101906	SR(D)
5-85188-4	I - E	CURRY YELLOW (RAL 1027)	3720101772	RD COUPE(D+P+2PT) F/L
5-85188-3	C - M	GRAPHITE BLACK (RAL 9011)	3720101771	RD COUPE(D+2PT) F/L
5-85188-2	C - L	TURQUOISE BLUE (RAL 5016)	3720101770	RD COUPE(D+P) F/L
5-85188-1	B - M	LIGHT PINK (RAL 3015)	3720101769	RD COUPE(D) F/L
4-85188-8	B - L	CLAY BROWN (RAL 8033)	3720101692	J1(D+P)
4-85188-7	A - M	WINE RED (RAL 3005)	3720101691	M2
4-85188-5	B - C	BLUE GREY (RAL 7031)	3720101653	R099 F/L(D+P)
4-85188-4	A - B	COBALT BLUE (RAL 5013)	3720101652	R099 F/L(D)
4-85188-3	O - P	ROSE (RAL 3017)	3720101633	Q44(D)
4-85188-2	M - N	GREEN (RAL 6002)	3720101639	HP(D+P)
4-85188-1	L - N	TRAFFIC YELLOW (RAL 1023)	3720101640	M2(D+P)
3-85188-8	A - F	BLUE LLAC (RAL 4005)	3720101547	RD COUPE(D+P)
3-85188-7	A - H	BEIGE (RAL 1001)	3720101546	RD COUPE(D)
3-85188-2	F - H	LIGHT MORY (RAL 1015)	3720101944	A1 SHORT(D+P)
3-85188-1	F - H	CLAY BROWN (RAL 8033)	3720101943	A1 SHORT(D)

P/N	CODING	C O L O R	SUBJECT NO.	APPLICATION
9-85188-2	D - E	Jet Black (RAL 9005)	3720102928	CHINA, HAE HAE2.5 (4FC)
9-85188-1	D - E	Matin Yellow (RAL 1028)	3720102929	CHINA, HAE HAE2.5 (2FC)
8-85188-9	O - H	Rosebery Red (RAL 3027)	3720102911	CHINA, HAE 2.5 S11(1F)
8-85188-8		THIS IS PART NO FOR EXPORT	PACKING TO 0-85188-5	
8-85188-7	P - E	BRILLIANT BLUE (RAL 5007)	3720102202	IRAN, HAE 2.5(QAB+2PT)
8-85188-6	P - M	CURRY (RAL 1027)	3720102199	CHINA, HAE 2.5(QAB+PM)
8-85188-5	P - L	GREY WHITE (RAL 6032)	3720102198	CHINA, HAE 2.5(QAB+PM+2PT)
8-85188-4	O - S	SIGNAL GREEN (RAL 6032)	3720102197	CHINA, HAE 2.5 (DAB+PM)
8-85188-3	J - S	MOSS GREEN (RAL 6005)	3720102132	CK 1, 4F(D+P)
8-85188-2	I - S	PATINA GREEN (RAL 6000)	3720102133	K2 218, 2F(D+P)
8-85188-1	D - S	RESEDA GREEN (RAL 6011)	3720102136	S11, 1F(D)
7-85188-9	C - S	TRAFFIC ORANGE (RAL 2009)	3720102118	CF6470, Linoob
7-85188-8	B - S	OPAL GREEN (RAL 6026)	3720102104	A1, 2F
7-85188-7	A - S	GREEN BLUE (RAL 5001)	3720102105	A1, 1F
7-85188-6	J - R	SIGNAL YELLOW (RAL 1003)	3720102099	HFJ 7110, 2F
7-85188-5	I - R	RED BROWN (RAL 8012)	3720102076	A1, 4F 04MY
7-85188-4	O - R	BEIGE GREY (RAL 7006)	3720102075	A1, 3F 04MY
7-85188-3	D - R	TRAFFIC RED (RAL 3020)	3720102074	CA 7180, 2F(D+P)
7-85188-2	C - R	BLACK OLIVE (RAL 6015)	3720102060	A11, 2F(D+P)
7-85188-1	B - R	PLATINUM GREY (RAL 7036)	3720102045	CA72023, 2F(D+P)
6-85188-9	A - R	LIGHT GREEN (RAL 6027)	3720102044	SU 2021(D + P)
6-85188-8	O - M	SALMON PINK (RAL 3022)	3720102043	HFJ 7110(D + P + 2PT)
6-85188-7	O - L	PASTEL VIOLET (RAL 4009)	3720102033	A11, M(D)
6-85188-6	O - H	CRYSTAL WHITE (RAL 1013)	3720102031	S11, 2F(D +P)

TYCO ELECTRONICS Tyco Electronics Kyungtan, Korea

INTEGRAL FINISH

6-0008 ± 0.2
3000 ± 0.2
3000 ± 0.2
3000 ± 0.2

PRECISE SPEC

APPLICATOR SPEC

FILE / DATE USE / DRAWING NO

1/00779/8-5188

CUSTOMER DRAWING



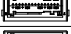

SCALE 2/1



REV 3

REV AB

AIR BAG 30P HEADER CAP HOUSING ASSY

8		7		6		5		4		3		2		1	
THE DRAWING IS UNPUBLISHED												REVISED FOR PUBLICATION			
COPYRIGHT © BY TYCO ELECTRONICS CORPORATION ALL RIGHTS RESERVED												REVISIONS			
												DATE	BY	APPV	
												DATE	BY	APPV	

9-85188-3	B - D	OCE-BLUE (RAL 5020)			
9-85188-4	B - E	Olive Gray (RAL 7002)			
9-85188-5	B - F	Header Violet (RAL 4003)			
9-85188-6	J - S	SIGNAL VIOLET (RAL 4008)		3720102132	CHINA, LF520 4PC(D+P+2PT)

 Tyco Electronics Kyungpook, Korea		PART NO. 9-85188-6 DATE: 08/11/08
DIMENSIONS: mm FINISH: POLYURETHANE INTEGRAL: 	PRECISION: ±0.05mm SURFACE: 3000 FINISH: 0.2	PROJECT NO.: APPLICATION: AIR BAG 30P HEADER CAP HOUSING ASSY TITLE: 85188-6 PART NO.: 9-85188-6 DRAWING NO.: 100779 SCALE: 2/1 SHEET: 3 OF 3 REV: AB
CUSTOMER DRAWING		DRAWN BY: AB CHECKED BY: AB DATE: 08/11/08