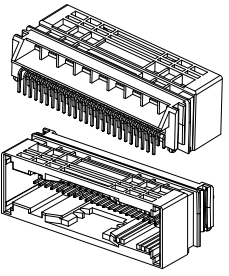
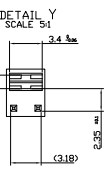
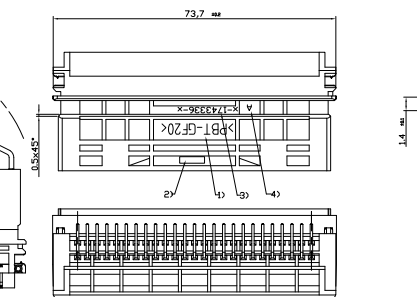
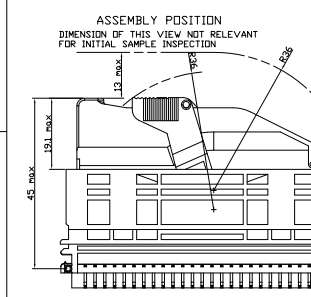
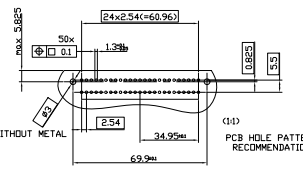
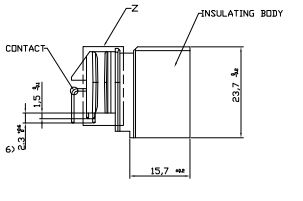
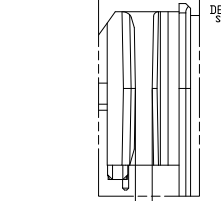
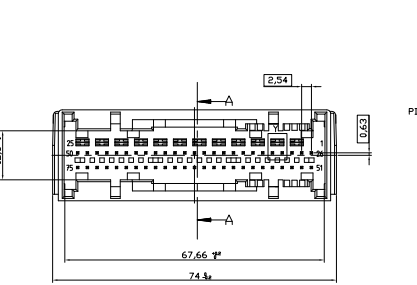
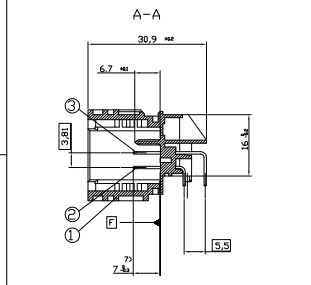
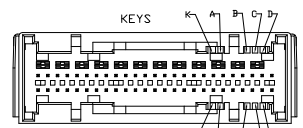
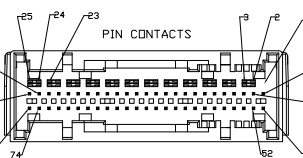
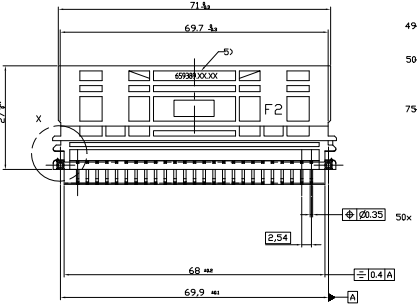
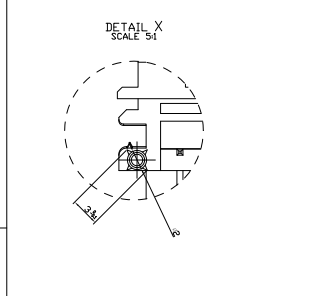


| REV | DATE | DESCRIPTION | BY | CHK | APP |
|-----|-------------------------|-------------|----|-----|-----|
| A | RELEASD | | | | |
| A1 | REVISED (COR-05-01837) | | | | |
| B | REVISED (COR-07-01154B) | | | | |
| C | REVISED (COR-09-03399) | | | | |
| D | REVISED (COR-09-03343) | | | | |



MATERIAL
 INSULATING BODY
 PBT GF 50
 RECYCLE MATERIAL MAX 25%
 COLOR: SEE TABLE

PIN CONTACT: 6x1 □
 LOGO: 0.16mm

FINISH:
 PLATING AREA: 1.80mm AL OVER 1240 MM H
 SOLDERING AREA: 2.14mm Sn OVER 1240 MM H

PUSH-OUT FORCE: IN DIRECTION OF CONNECTION
 $25 N$ WITH $$0.15$ MM/MIN AFTER SOLDERING
 STEER: 1.5MM ± 0.1
 SA AT ONE PIN, WHEN AT ALL OTHER PINS 1A FLAWS
 INITIAL RESISTANCE: 4.2 OHM$

130 DATE CODE INSULATING BODY
 132 TOLERANCE: VALID UP TO 7MM OVER BOTTOM OTHERWISE -61, +62
 133 MEASUREMENT POINTS FOR REFERENCES D AND E
 134 MEASUREMENT POINTS FOR REFERENCE F
 135 MEASUREMENT POINTS FOR REFERENCE G
 136 MEASUREMENT POINTS FOR REFERENCE H AND C
 137 MEASUREMENT AREA UP TO BONDING EDGE (MM)
 138 MEASUREMENT AREA UP TO BONDING EDGE (MM)
 139 PART NO. SIEMENS AT
 140 CAVITY SYMBOL
 141 PART NO. FOR ASSY
 142 MANUFACTURER LOGO SCRIPT HEIGHT 1.5 MM
 143 MATERIAL SYMBOL

-ALL KEYS POSSIBLE WITH INSERTS
 -NO KEYS WITH ENGAGEMENT FORCE $50 N$
 -CABLE OUTLET: LEFT AND RIGHT
 -NO FREE METAL PARTS PRESENT
 -CONNECTOR FREE OF CADMIUM: -SOPPP
 -STABILITY OF THE CONNECTOR SYSTEM
 -100N TENSILE FORCE OF THE WIRING HARNESS AND
 -100N PRESSURE FORCE OF THE FEMALE CONNECTOR
 IN EACH DIRECTION

| | |
|---|----------------|
| AMP KOREA, Kyungson, Korea | |
| DRAWING NO: AIR BAG 75P HEADER ASSEMBLY (FA-II) | PART NO: 00779 |
| REV: 1 | DATE: 07/15/05 |
| DESIGNED BY: | CHECKED BY: |
| DRAWN BY: | APPR: |
| DATE: | SCALE: |

NOT SHOWING DIMENSIONS
 ALL DIMENSIONS FOR PACKAGING
 © COPYRIGHT BY THE CUSTOMER OWNERS OF THESE PATENTS

| REVISONS | | DATE | BY | APPV |
|---------------|-----|------|----|------|
| 01 | REV | | | |
| 02 | REV | | | |
| SEE SHEET 002 | | | | |

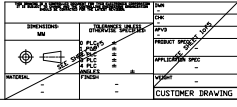
KEYS
 K A B C D
 E F G H



| | |
|-----------------------------------|--|
| AMP KOREA, Kyungson, Korea | |
| AIR BAG 75P HEADER ASSEMBLY(A-II) | |
| | PART NO. 00779 DATE 08/08/00 DRAWN BY CHECKED BY APPROVED BY CUSTOMER DRAWING |
| SHEET NO. 2/1 TOTAL SHEETS 5 | REVISION NO. 0 DATE BY APPV |

| QTY | PART NO. | PART NAME | MATERIAL | FINISH/COLOR | PIN CONTACTS | SIEMENS AT NO. | ITEM |
|-----|-------------|-----------|-------------------|--------------|----------------|----------------|-------------|
| 1 | 7-1743336-9 | A-H | BROWN BESE | E-35391-5 | 04-30-29-26 | A2C5334601 | 1-1743336-9 |
| 1 | 7-1743336-8 | A-E | JET BLUE | E-35391-1 | 04-30-29-26-75 | A2C5334600 | 1-1743336-8 |
| 1 | 7-1743336-7 | A-C-L | ROYAL GREY | E-35391-9 | 04-30-29-26-24 | A2C53338797 | 1-1743336-7 |
| 1 | 7-1743336-6 | A-L-K | SIGNAL BLUE | E-35391-3 | 04-30-29-26-24 | - | 1-1743336-6 |
| 1 | 7-1743336-5 | A-G-H | TRAFFIC BLUE | E-35391-7 | 04-30-29-26-75 | - | 1-1743336-5 |
| 1 | 7-1743336-4 | A-D | PASTEL VIOLET | E-35391-2 | 04-30-29-26-75 | KR.78.75 | 1-1743336-4 |
| 1 | 7-1743336-3 | A-F-H | ULTRA MARINE BLUE | E-35391-4 | 04-30-29-26-75 | KR.78.74 | 1-1743336-3 |
| 1 | 7-1743336-2 | A-B-D | SAFARI PINK | E-35391-6 | 04-30-29-26-75 | KR.78.73 | 1-1743336-2 |
| 1 | 6-1743336-1 | A-C-D | TRAFIC RED | E-35391-8 | 04-30-29-26-75 | - | 1-1743336-1 |
| 1 | 6-1743336-9 | A-F | BLUE LILAC | E-35391-9 | 04-30-29-26-75 | KR.78.72 | 6-1743336-9 |
| 1 | 6-1743336-8 | A-D-L | ULTRA MARINE BLUE | E-35391-4 | 04-30-29-26-75 | KR.78.71 | 6-1743336-8 |
| 1 | 6-1743336-7 | A-F-K | LEAF GREEN | E-35391-5 | 04-30-29-26-75 | KR.78.70 | 6-1743336-7 |
| 1 | 6-1743336-6 | A-G | REDEA GREEN | E-35391-6 | 04-30-29-26-75 | KR.78.69 | 6-1743336-6 |
| 1 | 6-1743336-5 | A-B-L | BRIGHT BLUE | E-35391-3 | 04-30-29-26-75 | KR.78.68 | 6-1743336-5 |
| 1 | 6-1743336-4 | A-C-E | PLATINUM GREY | E-35391-7 | 04-30-29-26-75 | KR.78.67 | 6-1743336-4 |
| 1 | 6-1743336-3 | A-B-K | YELLOW ORANGE | E-35391-8 | 04-30-29-26-75 | KR.78.66 | 6-1743336-3 |
| 1 | 6-1743336-2 | A-E-F | HEADER VIOLET | E-35391-9 | 04-30-29-26-75 | KR.78.65 | 6-1743336-2 |
| 1 | 6-1743336-1 | A-A-B | HEADERS ANCHOR | E-35391-5 | 04-30-29-26-75 | KR.78.64 | 6-1743336-1 |

A
B
C
D



Customer Drawing showing a component with dimensions and labels. The drawing includes a circular feature with a central hole and a rectangular feature with a hole. Dimensions are provided in millimeters. Labels include 'DIMENSIONS IN mm', 'DRAWN BY', 'CHECKED BY', 'DATE', 'SCALE', 'SHEET NO.', 'TOTAL SHEETS', and 'CUSTUMER DRAWING'.

BARCODE OVERVIEW

| CONNECTOR, ECU SIDE | | | |
|---------------------|-------------|----------|-----------|
| SIEMENS P/NO. | TE P/NO. | KEY CODE | MLFB |
| KR 9301.78.19 | 1-1743336-1 | C-H | 5WY6 7001 |
| KR 9301.78.21 | 1-1743336-2 | D-G | 5WY6 7003 |
| KR 9301.78.23 | 1-1743336-3 | B-E | 5WY6 7005 |
| KR 9301.78.25 | 1-1743336-4 | B-D | 5WY6 7007 |
| KR 9301.78.26 | 1-1743336-5 | F-H | 5WY6 7008 |
| KR 9301.78.27 | 1-1743336-6 | A-D | 5WY6 7009 |
| KR 9301.78.28 | 1-1743336-7 | B-C | 5WY6 7010 |
| KR 9301.78.29 | 1-1743336-8 | A-L | 5WY6 7011 |
| KR 9301.78.30 | 1-1743336-9 | C-L | 5WY6 7012 |
| KR 9301.78.49 | 2-1743336-1 | E-K | 5WY6 7031 |
| KR 9301.78.50 | 2-1743336-2 | E-H | 5WY6 7032 |
| KR 9301.78.51 | 2-1743336-3 | D-K | 5WY6 7033 |
| KR 9301.78.52 | 2-1743336-4 | H-L | 5WY6 7034 |
| KR 9301.78.53 | 2-1743336-5 | F-L | 5WY6 7035 |
| KR 9301.78.54 | 2-1743336-6 | A-K | 5WY6 7036 |
| KR 9301.78.55 | 2-1743336-7 | D-H | 5WY6 7037 |
| KR 9301.78.56 | 2-1743336-8 | C-G | 5WY6 7038 |
| KR 9301.78.57 | 2-1743336-9 | B-F | 5WY6 7039 |
| KR 9301.78.58 | 3-1743336-1 | A-E | 5WY6 7040 |
| KR 9301.78.59 | 5-1743336-5 | E-L | 5WY6 7051 |
| KR 9301.78.60 | 5-1743336-6 | D-E | 5WY6 7043 |
| KR 9301.78.61 | 5-1743336-7 | E-G | 5WY6 7044 |
| KR 9301.78.62 | 5-1743336-8 | C-K | 5WY6 7045 |
| KR 9301.78.63 | 5-1743336-9 | G-L | 5WY6 7046 |
| KR 9301.78.64 | 6-1743336-1 | A-B | 5WY6 7047 |
| KR 9301.78.65 | 6-1743336-2 | E-F | 5WY6 7048 |
| KR 9301.78.66 | 6-1743336-3 | B-K | 5WY6 7049 |
| KR 9301.78.67 | 6-1743336-4 | C-E | 5WY6 7050 |
| KR 9301.78.68 | 6-1743336-5 | B-L | 5WY6 7052 |
| KR 9301.78.69 | 6-1743336-6 | A-G | 5WY6 7053 |
| KR 9301.78.70 | 6-1743336-7 | F-K | 5WY6 7054 |
| KR 9301.78.71 | 6-1743336-8 | D-L | 5WY6 7055 |
| KR 9301.78.72 | 6-1743336-9 | A-F | 5WY6 7056 |

| CONNECTOR, ECU SIDE | | | |
|---------------------|-------------|----------|-----------|
| SIEMENS P/NO. | TE P/NO. | KEY CODE | MLFB |
| KR 9301.78.73 | 7-1743336-2 | B-D | 5WY6 7057 |
| KR 9301.78.74 | 7-1743336-3 | F-H | 5WY6 7058 |
| KR 9301.78.75 | 7-1743336-4 | A-D | 5WY6 7059 |
| | | | |
| | | | |
| | | | |
| | | | |
| | | | |
| | | | |
| | | | |
| | | | |
| | | | |
| | | | |
| | | | |
| | | | |
| | | | |
| | | | |
| | | | |
| | | | |
| | | | |
| | | | |
| | | | |
| | | | |
| | | | |
| | | | |
| | | | |
| | | | |
| | | | |
| | | | |
| | | | |
| | | | |
| | | | |
| | | | |
| | | | |
| | | | |
| | | | |
| | | | |
| | | | |
| | | | |
| | | | |