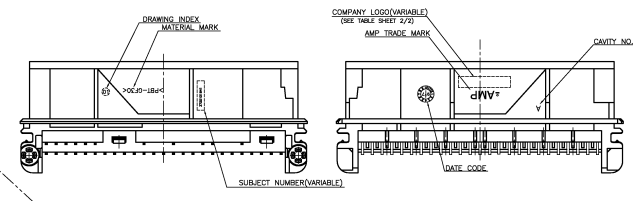
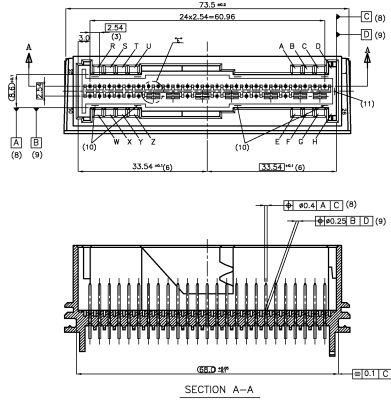
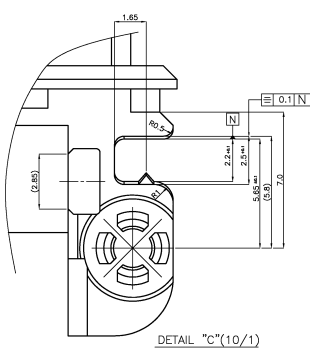
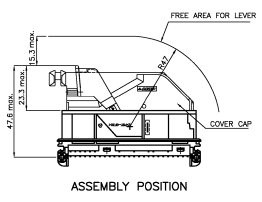
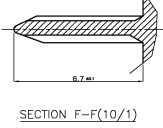
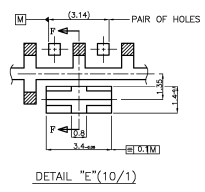
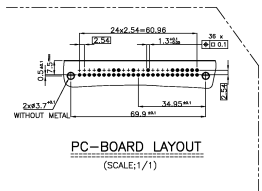
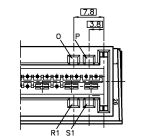
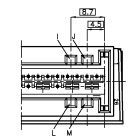
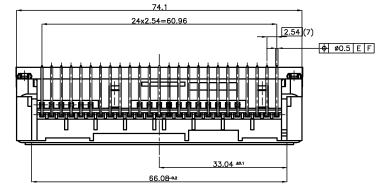
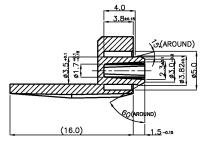
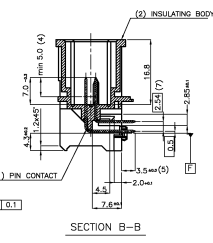
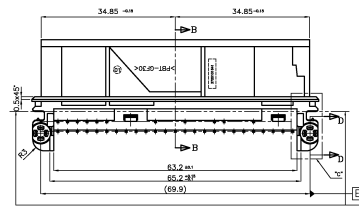
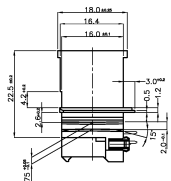


NOT BEARING TO OPERATOR RELEASED FOR RELEASE
 IF THIS ELECTRICAL COMPONENT IS NOT REVERSE

REV	DATE	DESCRIPTION	BY	CHK	APP
S	REVISED	(FC00-0039-02)	SH/AN	SH	CS
T	REVISED	(FC00-0002-03)	SH/AN	SH	CS
U	REVISED	(FC00-0072-03)	SH/AN	SH	CS
V	REVISED	(FC00-0008-04)	SH/AN	SH	CS
W	REVISED	(FC00-0048-04)	SH/AN	SH	CS
Y	REVISED	(ECR-06-028031)	SH/AN	SH	CS

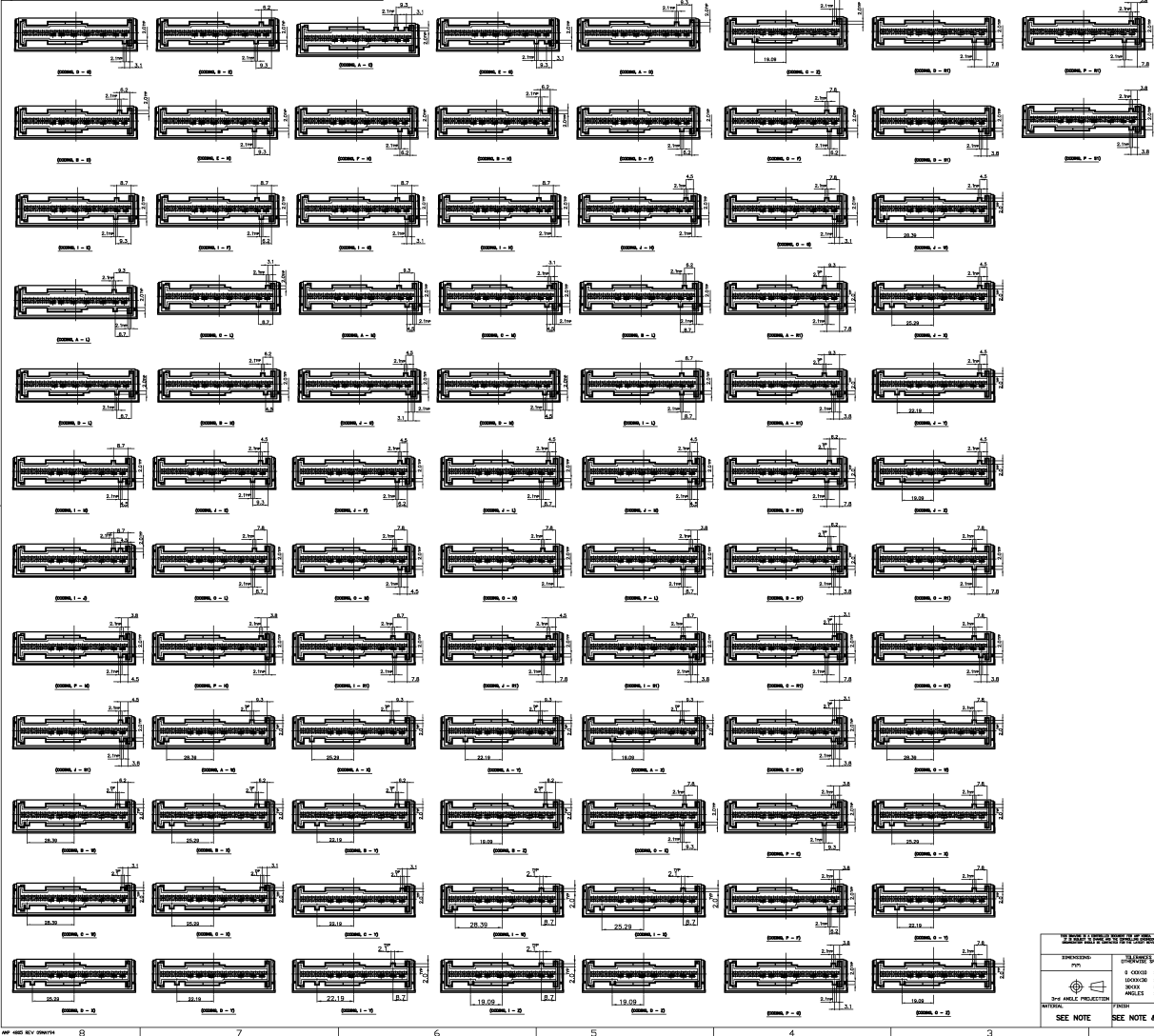


- NOTES**
- (1) PIN CONTACT : ± 0.03
 MATERIAL : Cu96Pb4
 - (2) FINISH : SEE TABLE SHEET 2/2.
 - (3) EXERCISE FORCE IN DIRECTION OF CONNECTION (DETECTION AS SEPARATE OPERATION)
 - * >20N but $\leq 200\text{mm/min}$, AFTER SOLDERING STRESS
 - * >40N but $\leq 100\text{mm/min}$
 - (4) ENVIRONMENTAL REQUIREMENTS ACCORDING TO AMP SPEC 108-61031
 - * NO MOSHIR-EFFECT BY ASSEMBLY FORCE $\leq 50\text{N}$
 - * DRAWING KEY B (0-1)
 - * FREE OF LOOSE METAL PARTS
 - * PIN CONNECTOR : FREE OF CADMIUM ($\leq 50\text{ppm}$)
 - (5) INSULATING BODY
 - (1) MATERIAL : PBT + GF30K
 - (2) COLOR : CONSULT THE DRAWING
 - (3) ALLOWED RECYCLED MATERIAL MAX 25%
 - (4) MATING AREA
 - (5) SOLDERING AREA
 - (6) MEASURED TO THE CENTER LINE OF THE INSULATING BODY
 - (7) CONNECTIONS SUSCEPTIBLE FOR HOLE DIAMETER 1.3, SEE PC-BOARD LAYOUT
 - (8) MEASURED AT PIN TOP(7MM ABOVE BOTTOM)
 - (9) MEASURED AT THE BOTTOM
 - (10) MEASUREMENT POINTS FOR REFERENCE
 - (11) MEASUREMENT POINTS FOR REFERENCE



PARTS LIST DIMENSIONS UNIT SEE NOTE	DRAWING INDEX MATERIAL MARK COMPANY LOGO(VARIABLE) AMP TRACE MARK CAVITY NO. DATE CODE SUBJECT NUMBER(VARIABLE)	AMP KOREA Kyungson, Korea AIR BAG 50P HEADER ASSY 00779 368213 SCALE: 2/1 SHEET 1 OF 2 REV. Y
--	---	---

KEY-CODE LAYOUT



REVISONS		DATE	BY	CHK	APPV
1	INITIAL				

SEE 1 OF 2 SHEET

NO.	REVISION	DATE	BY	CHK	APPV
1.1	INITIAL				
1.2	INITIAL				
1.3	INITIAL				
1.4	INITIAL				
1.5	INITIAL				
1.6	INITIAL				
1.7	INITIAL				
1.8	INITIAL				
1.9	INITIAL				
1.10	INITIAL				
1.11	INITIAL				
1.12	INITIAL				
1.13	INITIAL				
1.14	INITIAL				
1.15	INITIAL				
1.16	INITIAL				
1.17	INITIAL				
1.18	INITIAL				
1.19	INITIAL				
1.20	INITIAL				
1.21	INITIAL				
1.22	INITIAL				
1.23	INITIAL				
1.24	INITIAL				
1.25	INITIAL				
1.26	INITIAL				
1.27	INITIAL				
1.28	INITIAL				
1.29	INITIAL				
1.30	INITIAL				
1.31	INITIAL				
1.32	INITIAL				
1.33	INITIAL				
1.34	INITIAL				
1.35	INITIAL				
1.36	INITIAL				
1.37	INITIAL				
1.38	INITIAL				
1.39	INITIAL				
1.40	INITIAL				
1.41	INITIAL				
1.42	INITIAL				
1.43	INITIAL				
1.44	INITIAL				
1.45	INITIAL				
1.46	INITIAL				
1.47	INITIAL				
1.48	INITIAL				
1.49	INITIAL				
1.50	INITIAL				
1.51	INITIAL				
1.52	INITIAL				
1.53	INITIAL				
1.54	INITIAL				
1.55	INITIAL				
1.56	INITIAL				
1.57	INITIAL				
1.58	INITIAL				
1.59	INITIAL				
1.60	INITIAL				
1.61	INITIAL				
1.62	INITIAL				
1.63	INITIAL				
1.64	INITIAL				
1.65	INITIAL				
1.66	INITIAL				
1.67	INITIAL				
1.68	INITIAL				
1.69	INITIAL				
1.70	INITIAL				
1.71	INITIAL				
1.72	INITIAL				
1.73	INITIAL				
1.74	INITIAL				
1.75	INITIAL				
1.76	INITIAL				
1.77	INITIAL				
1.78	INITIAL				
1.79	INITIAL				
1.80	INITIAL				
1.81	INITIAL				
1.82	INITIAL				
1.83	INITIAL				
1.84	INITIAL				
1.85	INITIAL				
1.86	INITIAL				
1.87	INITIAL				
1.88	INITIAL				
1.89	INITIAL				
1.90	INITIAL				
1.91	INITIAL				
1.92	INITIAL				
1.93	INITIAL				
1.94	INITIAL				
1.95	INITIAL				
1.96	INITIAL				
1.97	INITIAL				
1.98	INITIAL				
1.99	INITIAL				
1.100	INITIAL				

AMP KOREA
 Kyungson, Korea
AIR BAG 50P HEADER ASS'Y
 DRAWING NO. 100779
 DATE 2/1/07
 REV. 2